

LEGENDplex™ Mouse SCF Capture Bead B6, 13X

Catalog# / Size	740694 / 100 tests (270 µL)
Regulatory Status	RUO
Other Names	HSC, Kit Ligand, KITLG, Mast Cell Growth Factor, MGF, Steel Factor, SLF
Description	<p>These Mouse SCF Capture Beads are suitable for use with the following Mix and Match reagents:</p> <p><u>Mouse HSC Panel</u> 740685 (LEGENDplex™ Mouse HSC Panel Detection Antibodies) 740684 (LEGENDplex™ Mouse HSC Panel Standard) 741206 (LEGENDplex™ Buffer Set H1)</p> <p>For product manuals for these panels, please visit the Mix and Match tab on the LEGENDplex™ page.</p>

Product Details

Verified Reactivity	Mouse
Application	Multiplex
	Learn more about LEGENDplex™ at biolegend.com/legendplex
	Download the LEGENDplex™ software here .

Antigen Details

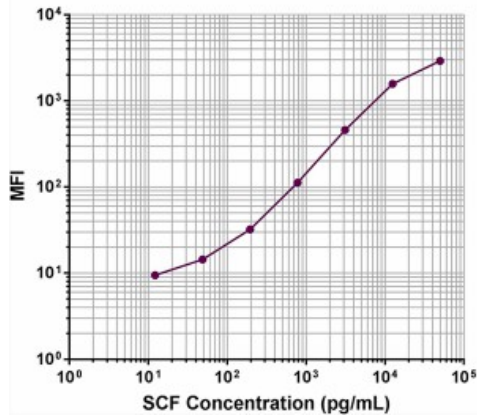
Biology Area	Angiogenesis, Cell Biology, Immunology, Signal Transduction, Stem Cells
Molecular Family	Cytokines/Chemokines, Growth Factors
Gene ID	17311

Related Protocols

[LEGENDplex™ Laboratory Protocol - Video](#)

Product Data

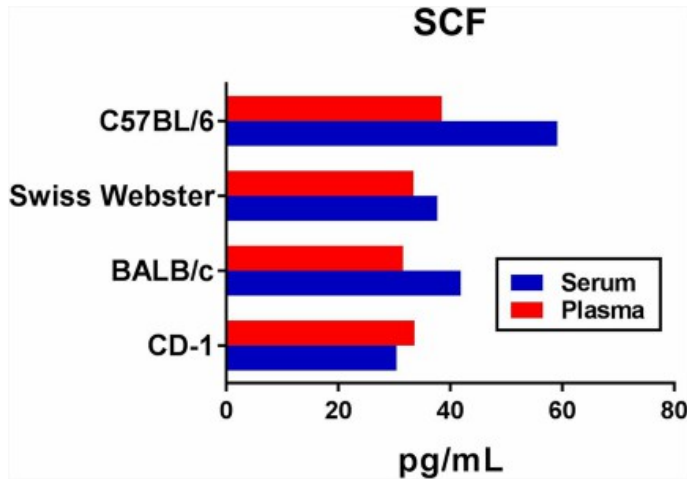
**LEGENDplex™ Mouse SCF Capture Bead B6
Representative Standard Curve**



Data generated using the following
LEGENDplex™ Mix & Match Reagents:

- Mouse SCF Capture Bead B6, 13X (Cat. # 740694)
- Mouse HSC Panel Detection Antibodies (Cat. # 740685)
- Mouse HSC Panel Standard (Cat. # 740684)
- Buffer Set H (Cat. # 740620)

Note: Data acquired on a BD FACSCalibur™ flow cytometer.



Serum and plasma samples of the following mouse strains were pooled from a minimum of ten mice each, and tested for the endogenous levels of the proteins using the LEGENDplex™ Mouse HSC Panel.

For research use only. Not for diagnostic use. Not for resale. BioLegend will not be held responsible for patent infringement or other violations that may occur with the use of our products.

*These products may be covered by one or more Limited Use Label Licenses (see the BioLegend Catalog or our website, www.biolegend.com/ordering#license). BioLegend products may not be transferred to third parties, resold, modified for resale, or used to manufacture commercial products, reverse engineer functionally similar materials, or to provide a service to third parties without written approval of BioLegend. By use of these products you accept the terms and conditions of all applicable Limited Use Label Licenses. Unless otherwise indicated, these products are for research use only and are not intended for human or animal diagnostic, therapeutic or commercial use.

BioLegend Inc., 8999 BioLegend Way, San Diego, CA 92121 www.biolegend.com
Toll-Free Phone: 1-877-Bio-Legend (246-5343) Phone: (858) 768-5800 Fax: (877) 455-9587