

PE anti-human LOX-1 Antibody

Catalog# / Size	358603 / 25 tests 358604 / 100 tests
Clone	15C4
Regulatory Status	RUO
Other Names	OLR1, LOX1, LOXIN, SLOX1, CLEC8A, SCARE1
Isotype	Mouse IgG2a, κ
Description	Lectin-like oxidized LDL receptor 1 (LOX-1) also known as CLEC8A is a 31 kD single pass type II transmembrane protein and member of the C-type lectin superfamily. LOX-1 is a scavenger receptor and is involved in endocytosis, phagocytosis and cytokine production. CLEC8A is expressed by endothelial cells, smooth muscle cells, platelets, fibroblasts, macrophages, and is upregulated by inflammatory and oxidative stimuli. LOX-1 recognizes numerous ligands including lipoproteins, apoptotic cells heat shock proteins, C-reactive protein and oxidized LDL. LOX-1 is implicated in atherosclerosis and vascular inflammation.

Product Details

Verified Reactivity	Human
Antibody Type	Monoclonal
Host Species	Mouse
Immunogen	LOX-1 ectodomain: Fc fusion protein
Formulation	Phosphate-buffered solution, pH 7.2, containing 0.09% sodium azide and BSA (origin USA)
Preparation	The antibody was purified by affinity chromatography and conjugated with PE under optimal conditions.
Concentration	Lot-specific (to obtain lot-specific concentration, please enter the lot number in our Concentration and Expiration Lookup or Certificate of Analysis online tools.)
Storage & Handling	The antibody solution should be stored undiluted between 2°C and 8°C, and protected from prolonged exposure to light. Do not freeze.
Application	FC - Quality tested
Recommended Usage	Each lot of this antibody is quality control tested by immunofluorescent staining with flow cytometric analysis . For flow cytometric staining, the suggested use of this reagent is 5 µl per million cells in 100 µl staining volume or 5 µl per 100 µl of whole blood.
Excitation Laser	Blue Laser (488 nm) Green Laser (532 nm)/Yellow-Green Laser (561 nm)
Application Notes	Additional reported applications (for the relevant formats) include: immunofluorescent staining of acetone-fixed frozen human skin sections ¹ .
Application References	1. Li D, <i>et al.</i> 2012. <i>J. Exp. Med.</i> 209:109. (IHC)
(PubMed link indicates BioLegend citation)	
Product Citations	1. Tu J, <i>et al.</i> 2022. <i>Adv Sci (Weinh)</i> . 9:e2103631. PubMed 2. Thompson EA, <i>et al.</i> 2021. <i>Cell Rep.</i> 108863:34. PubMed
RRID	AB_2562180 (BioLegend Cat. No. 358603) AB_2562181 (BioLegend Cat. No. 358604)

Antigen Details

Structure	Single pass, type II, transmembrane protein, 31 kD, homodimer, member of the C-type lectin superfamily.
Distribution	Endothelial cells, smooth muscle, platelets, fibroblasts, macrophages; Upregulated by inflammatory and oxidative stimuli
Function	Scavenger receptor, involved in endocytosis, phagocytosis and cytokine production
Ligand/Receptor	Recognizes numerous ligands including lipoproteins, apoptotic cells, heat shock proteins, C-reactive protein, oxidized LDL
Cell Type	Endothelial cells, Platelets, Fibroblasts, Macrophages, Dendritic cells
Biology Area	Cell Adhesion, Cell Biology, Immunology, Innate Immunity
Molecular Family	Adhesion Molecules
Antigen References	<ol style="list-style-type: none">1. Yin Y, <i>et al.</i> 2013. <i>Eur. J. Cell Biol.</i> 92:150.2. Khaidakov M. and Mehta JL. 2012. <i>PLoS One.</i> 7:e46973.3. Sawamura T, <i>et al.</i> 2012. <i>Curr. Opin. Lipidol.</i> 23:439.4. Lin FY, <i>et al.</i> 2011. <i>J. Immunol.</i> 186:4405.5. Parlato S, <i>et al.</i> 2010. <i>Blood</i> 115:1554.
Gene ID	4973

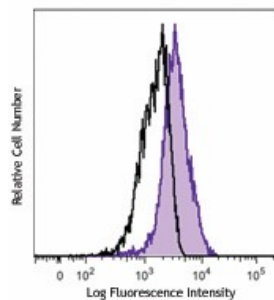
Related Protocols

[Cell Surface Flow Cytometry Staining Protocol](#)

Other Formats

PE anti-human LOX-1, Purified anti-human LOX-1, APC anti-human LOX-1, Brilliant Violet 421™ anti-human LOX-1, TotalSeq™-A0591 anti-human LOX-1, TotalSeq™-C0591 anti-human LOX-1, TotalSeq™-B0591 anti-human LOX-1 Antibody

Product Data



GM-CSF-stimulated (3 days) human peripheral blood monocytes were stained with LOX-1 (clone 15C4) PE (filled histogram) or mouse IgG2a, κ PE isotype control (open histogram).

For research use only. Not for diagnostic use. Not for resale. BioLegend will not be held responsible for patent infringement or other violations that may occur with the use of our products.

*These products may be covered by one or more Limited Use Label Licenses (see the BioLegend Catalog or our website, www.biolegend.com/ordering#license). BioLegend products may not be transferred to third parties, resold, modified for resale, or used to manufacture commercial products, reverse engineer functionally similar materials, or to provide a service to third parties without written approval of BioLegend. By use of these products you accept the terms and conditions of all applicable Limited Use Label Licenses. Unless otherwise indicated, these products are for research use only and are not intended for human or animal diagnostic, therapeutic or commercial use.

BioLegend Inc., 8999 BioLegend Way, San Diego, CA 92121 www.biolegend.com
Toll-Free Phone: 1-877-Bio-Legend (246-5343) Phone: (858) 768-5800 Fax: (877) 455-9587