

## Purified anti-MOG Antibody

<b>Catalog# / Size</b>	859901 / 25 µg
<b>Clone</b>	Poly28599
<b>Regulatory Status</b>	RUO
<b>Other Names</b>	MOG, Myelin Oligodendrocyte Glycoprotein
<b>Isotype</b>	Rabbit Polyclonal IgG
<b>Description</b>	Myelin Oligodendrocyte Glycoprotein (MOG) is a membrane protein expressed on the oligodendrocyte cell surface and the outermost surface of myelin sheaths. It is a primary target antigen involved in immune-mediated demyelination. This protein may be involved in completion and maintenance of the myelin sheath and in cell-cell communication, and mediate homophilic cell-cell adhesion. Diseases associated with MOG include Narcolepsy 7 and Rubella. Among its related pathways are Neural Stem Cell Differentiation Pathways and Lineage-specific Markers. MOG may also act as a receptor for rubella virus during microbial infection.

### Product Details

---

<b>Verified Reactivity</b>	Human
<b>Antibody Type</b>	Polyclonal
<b>Host Species</b>	Rabbit
<b>Immunogen</b>	Recombinant MOG expressed in <i>E.coli</i> .
<b>Formulation</b>	0.01 M PBS, pH7.4, containing 0.02% NaN <sub>3</sub> , 50% glycerol.
<b>Preparation</b>	The antibody was purified by affinity chromatography.
<b>Concentration</b>	0.5 mg/mL
<b>Storage &amp; Handling</b>	Store at 4°C for up to 3 months. For longer term storage aliquot into small volumes and store at -20°C
<b>Application</b>	<a href="#">WB - Quality tested</a> <a href="#">IHC-P - Verified</a>
<b>Recommended Usage</b>	Each lot of this antibody is quality control tested by <a href="#">Western blotting</a> . For Western blotting, the suggested use of this reagent is 0.1 - 0.5 µg per mL. For immunohistochemistry on formalin-fixed paraffin-embedded tissue sections, a concentration range of 1.0 - 10 µg/mL is suggested. It is recommended that the reagent be titrated for optimal performance for each application.
<b>RRID</b>	AB_2810735 (BioLegend Cat. No. 859901)

### Antigen Details

---

<b>Structure</b>	MOG is a 247 amino acid protein with an apparent molecular mass of ~28 kD.
<b>Distribution</b>	Tissue Distribution: Brain and spinal cord Cellular Distribution: Plasma membrane
<b>Function</b>	MOG is involved in completion and maintenance of the myelin sheath and cell-cell communication.
<b>Interaction</b>	Myelin, Rubella virus
<b>Cell Type</b>	Neurons, Oligodendrocytes
<b>Biology Area</b>	Cell Adhesion, Immunology, Neurodegeneration, Neuroscience, Stem Cells

**Molecular Family** Adhesion Molecules, Innate Immune Signaling

**Antigen References**

1. Reindl M, et al. 2017. *Curr Opin Neurol.* 30(3):295.
2. Hennes EM, et al. 2018. *Neuropediatrics.* 49(1):3.

**Gene ID**

[4340](#)

[17441](#)

[24558](#)

## Related Protocols

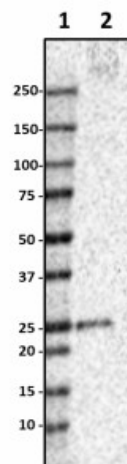
[Western Blotting Protocol](#)

[Immunohistochemistry Protocol for Paraffin-Embedded Sections](#)

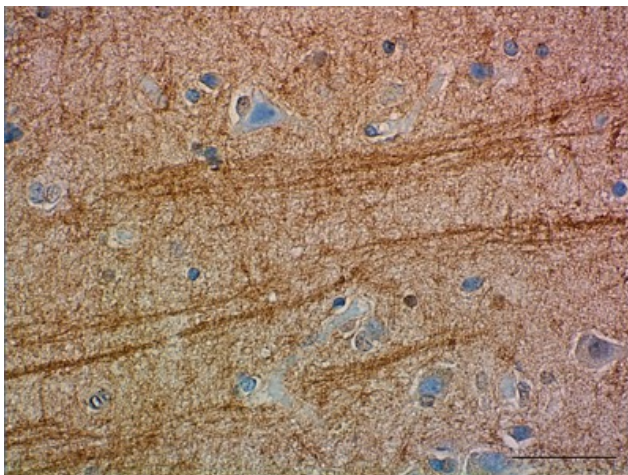
## Other Formats

Purified anti-MOG

## Product Data



Western blot of purified anti-MOG antibody (Poly28599). Lane 1: Molecular weight marker; Lane 2: 10 µg of human brain lysate. The blot was incubated with 0.2 µg/mL of the primary antibody overnight at 4°C, followed by incubation with HRP-labeled donkey anti-rabbit IgG (Cat. No. 406401). Enhanced chemiluminescence was used as the detection system.



IHC staining of purified anti-MOG antibody (Poly28599) on formalin-fixed paraffin-embedded human brain tissue. Following antigen retrieval using Sodium Citrate H.I.E.R., the tissue was incubated with 1 µg/ml of the primary antibody overnight at 4°C. BioLegend's Ultra Streptavidin (USA) HRP Detection Kit (Multi-Species, DAB, Cat. No. 929901) was used for detection followed by hematoxylin counterstaining, according to the protocol provided. The image was captured with a 40X objective. Scale Bar: 50 µm

\*These products may be covered by one or more Limited Use Label Licenses (see the BioLegend Catalog or our website, [www.biolegend.com/ordering#license](http://www.biolegend.com/ordering#license)). BioLegend products may not be transferred to third parties, resold, modified for resale, or used to manufacture commercial products, reverse engineer functionally similar materials, or to provide a service to third parties without written approval of BioLegend. By use of these products you accept the terms and conditions of all applicable Limited Use Label Licenses. Unless otherwise indicated, these products are for research use only and are not intended for human or animal diagnostic, therapeutic or commercial use.

BioLegend Inc., 8999 BioLegend Way, San Diego, CA 92121 [www.biolegend.com](http://www.biolegend.com)  
Toll-Free Phone: 1-877-Bio-Legend (246-5343) Phone: (858) 768-5800 Fax: (877) 455-9587