

Alexa Fluor® 647 anti-human CD42b Antibody

Catalog# / Size	303923 / 25 tests 303924 / 100 tests
Clone	HIP1
Regulatory Status	RUO
Workshop	IV P70
Other Names	Glycocalicin, gplba
Isotype	Mouse IgG1, κ
Description	CD42b is a 145 kD glycoprotein known as gplba. It is covalently bonded to CD42c to form GPIb. CD42b is expressed on platelets and megakaryocytes. CD42b/c heterodimer forms a complex with CD42a and d and acts as the receptor for von Willibrand factor and thrombin.

Product Details

Verified Reactivity	Human
Reported Reactivity	Chimpanzee
Antibody Type	Monoclonal
Host Species	Mouse
Formulation	Phosphate-buffered solution, pH 7.2, containing 0.09% sodium azide and BSA (origin USA)
Preparation	The antibody was purified by affinity chromatography and conjugated with Alexa Fluor® 647 under optimal conditions.
Concentration	Lot-specific (to obtain lot-specific concentration, please enter the lot number in our Concentration and Expiration Lookup or Certificate of Analysis online tools.)
Storage & Handling	The antibody solution should be stored undiluted between 2°C and 8°C, and protected from prolonged exposure to light. Do not freeze.
Application	FC - Quality tested
Recommended Usage	Each lot of this antibody is quality control tested by immunofluorescent staining with flow cytometric analysis . For flow cytometric staining, the suggested use of this reagent is 5 µl per million cells in 100 µl staining volume or 5 µl per 100 µl of whole blood. * Alexa Fluor® 647 has a maximum emission of 668 nm when it is excited at 633 nm / 635 nm. Alexa Fluor® and Pacific Blue™ are trademarks of Life Technologies Corporation. View full statement regarding label licenses
Excitation Laser	Red Laser (633 nm)
Application Notes	Clone HIP1 recognizes an epitope within the N-terminal region of the GPIIb chain ⁵ . Additional reported applications (for the relevant formats) include: immunohistochemical staining of acetone-fixed frozen tissue sections, Western blotting, and inhibition of platelet aggregation ² . The Ultra LEAF™ purified antibody (Endotoxin < 0.01 EU/µg, Azide-Free, 0.2 µm filtered) is recommended for functional assays (Cat. No. 303939).
Application References	<ol style="list-style-type: none">1. Knapp W, <i>et al.</i> 1989. Leucocyte Typing IV. Oxford University Press. New York.2. Takahashi R, <i>et al.</i> 1999. <i>Blood</i>. 93:1951.3. Saggi G, <i>et al.</i> 2013. <i>J. Immunol.</i> 190:6457. PubMed4. Meyer Dos Santos S, <i>et al.</i> 2011. <i>Blood</i>. 117:4999. (Block) PubMed5. Vettore S, <i>et al.</i> 2008. <i>Haematologica</i>. 93:1743.

Product Citations

1. Bahmani B, *et al.* 2021. Nat Commun. 12:1999. [PubMed](#)

RRID AB_2715924 (BioLegend Cat. No. 303923)
AB_2715925 (BioLegend Cat. No. 303924)

Antigen Details

Structure	Mucin, leucine-rich repeat family, 145 kD
Distribution	Platelets, megakaryocytes
Function	Complex with CD42a, c and d, platelet adhesion and activation
Ligand/Receptor	Von Willebrand factor, thrombin
Cell Type	Megakaryocytes, Platelets
Biology Area	Cell Adhesion, Cell Biology, Immunology
Molecular Family	Adhesion Molecules, CD Molecules
Antigen References	1. Clemetson K, <i>et al.</i> 1982. <i>J. Clin. Invest.</i> 70:304. 2. Fox J, <i>et al.</i> 1988. <i>J. Biol. Chem.</i> 263:4882. 3. Kuijpers R, <i>et al.</i> 1992 <i>Blood</i> 79:283.
Gene ID	2812

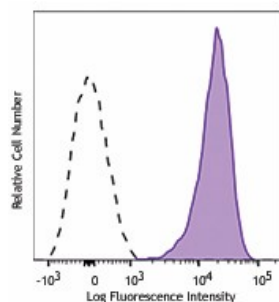
Related Protocols

[Cell Surface Flow Cytometry Staining Protocol](#)

Other Formats

FITC anti-human CD42b, PE anti-human CD42b, Purified anti-human CD42b, PerCP anti-human CD42b, APC anti-human CD42b, APC/Cyanine7 anti-human CD42b, PerCP/Cyanine5.5 anti-human CD42b, PE/Cyanine7 anti-human CD42b, Alexa Fluor® 488 anti-human CD42b, Brilliant Violet 650™ anti-human CD42b, Alexa Fluor® 647 anti-human CD42b, Alexa Fluor® 700 anti-human CD42b, Brilliant Violet 510™ anti-human CD42b, Brilliant Violet 421™ anti-human CD42b, PE/Dazzle™ 594 anti-human CD42b, TotalSeq™-A0216 anti-human CD42b, Ultra-LEAF™ Purified anti-human CD42b, TotalSeq™-C0216 anti-human CD42b, TotalSeq™-B0216 anti-human CD42b, TotalSeq™-D0216 anti-human CD42b

Product Data



Human platelets were stained with CD42b (clone HIP1) Alexa Fluor® 647 (filled histogram) or mouse IgG1, κ Alexa Fluor® 647 isotype control (open histogram).

For research use only. Not for diagnostic use. Not for resale. BioLegend will not be held responsible for patent infringement or other violations that may occur with the use of our products.

*These products may be covered by one or more Limited Use Label Licenses (see the BioLegend Catalog or our website, www.biolegend.com/ordering#license). BioLegend products may not be transferred to third parties, resold, modified for resale, or used to manufacture commercial products, reverse engineer functionally similar materials, or to provide a service to third parties without written approval of BioLegend. By use of these products you accept the terms and conditions of all applicable Limited Use Label Licenses. Unless otherwise indicated, these products are for research use only and are not intended for human or animal diagnostic, therapeutic or commercial use.

BioLegend Inc., 8999 BioLegend Way, San Diego, CA 92121 www.biolegend.com
Toll-Free Phone: 1-877-Bio-Legend (246-5343) Phone: (858) 768-5800 Fax: (877) 455-9587