

APC anti-mouse CD226 (DNAM-1) Antibody

Catalog# / Size	128809 / 25 µg 128810 / 100 µg
Clone	10E5
Regulatory Status	RUO
Other Names	DNAM-1, PTA1 (platelet and T cell activation antigen 1), TLISA1, LFA-1 associated Molecule PTA-1
Isotype	Rat IgG2b, κ
Description	CD226 (DNAM-1) is constitutively expressed on native CD8 ⁺ cells and on CD4 ⁺ T cells, macrophages and NK cells. This antibody (10E5) was reported to bind about 40% of inactivated CD4 ⁺ cells and binds only to differentiated Th1 cells, but not to Th2 or Th0 cells. It is also reported to suppress antigen-specific T cell expansion and EAE (experimental allergic encephalitis) mediated by Th1 cells.

Product Details

Verified Reactivity	Mouse
Antibody Type	Monoclonal
Host Species	Rat
Immunogen	Th1 polarized T cell clones
Formulation	Phosphate-buffered solution, pH 7.2, containing 0.09% sodium azide.
Preparation	The antibody was purified by affinity chromatography and conjugated with APC under optimal conditions.
Concentration	0.2 mg/ml
Storage & Handling	The antibody solution should be stored undiluted between 2°C and 8°C, and protected from prolonged exposure to light. Do not freeze.
Application	FC - Quality tested
Recommended Usage	Each lot of this antibody is quality control tested by immunofluorescent staining with flow cytometric analysis . For flow cytometric staining, the suggested use of this reagent is ≤1.0 µg per million cells in 100 µl volume. It is recommended that the reagent be titrated for optimal performance for each application.
Excitation Laser	Red Laser (633 nm)
Application References	1. Dardalhon V, <i>et al.</i> 2005. <i>J. Immunol.</i> 175:1558 2. Huang Z, <i>et al.</i> 2011. <i>J Immunol.</i> 186:3421. PubMed
Product Citations	1. Chan S, <i>et al.</i> 2022. <i>Nat Cancer.</i> . PubMed 2. Afolabi LO, <i>et al.</i> 2021. <i>Front Immunol.</i> 12:701671. PubMed 3. Anderson DA, <i>et al.</i> 2022. <i>J Exp Med.</i> 219:. PubMed
RRID	AB_2566626 (BioLegend Cat. No. 128809) AB_2566627 (BioLegend Cat. No. 128810)

Antigen Details

Structure	65 kd glycoprotein of a member of Ig-superfamily containing 2 immunoglobulin-like domains.
------------------	--

Distribution	Expressed on majority of CD4 ⁺ and CD8 ⁺ T cells, NK cells, monocytes/macrophages and a subset of B cells and thymocytes. Reported to be specifically expressed on the surface of Th1 cells, but downregulated in Th2 cells.
Function	Mediates cellular adhesion, involved in LFA-1 costimulatory signal for T cell differentiation and proliferation
Ligand/Receptor	CD112 and CD155
Cell Type	B cells, Macrophages, Monocytes, NK cells, T cells, Th1
Biology Area	Immunology
Molecular Family	Adhesion Molecules, CD Molecules
Antigen References	1. Tahara Hanaoka S, <i>et al.</i> 2006. <i>Blood</i> 107:1491 2. Shibuya K, <i>et al.</i> 2003. <i>J. Exp. Med.</i> 198:1829
Gene ID	225825

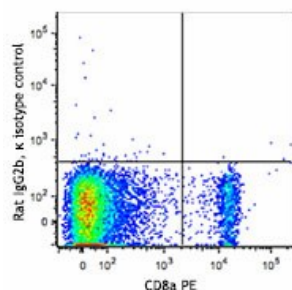
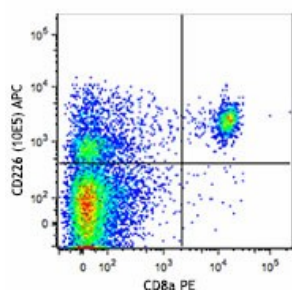
Related Protocols

[Cell Surface Flow Cytometry Staining Protocol](#)

Other Formats

FITC anti-mouse CD226 (DNAM-1), PE anti-mouse CD226 (DNAM-1), Alexa Fluor® 647 anti-mouse CD226 (DNAM-1), APC anti-mouse CD226 (DNAM-1), PE/Cyanine7 anti-mouse CD226 (DNAM-1), PerCP/Cyanine5.5 anti-mouse CD226 (DNAM-1), APC/Fire™ 750 anti-mouse CD226 (DNAM-1), PE/Dazzle™ 594 anti-mouse CD226 (DNAM-1), Biotin anti-mouse CD226 (DNAM-1), Purified anti-mouse CD226 (DNAM-1), TotalSeq™-A0852 anti-mouse CD226 (DNAM-1), TotalSeq™-C0852 anti-mouse CD226 (DNAM-1) Antibody

Product Data



C57BL/6 mouse splenocytes were stained with CD8a PE and CD226 (clone 10E5) APC (top) or rat IgG2b, κ APC isotype control (bottom).

For research use only. Not for diagnostic use. Not for resale. BioLegend will not be held responsible for patent infringement or other violations that may occur with the use of our products.

*These products may be covered by one or more Limited Use Label Licenses (see the BioLegend Catalog or our website, www.biolegend.com/ordering#license). BioLegend products may not be transferred to third parties, resold, modified for resale, or used to manufacture commercial products, reverse engineer functionally similar materials, or to provide a service to third parties without written approval of BioLegend. By use of these products you accept the terms and conditions of all applicable Limited Use Label Licenses. Unless otherwise indicated, these products are for research use only and are not intended for human or animal diagnostic,

therapeutic or commercial use.

BioLegend Inc., 8999 BioLegend Way, San Diego, CA 92121 www.biolegend.com
Toll-Free Phone: 1-877-Bio-Legend (246-5343) Phone: (858) 768-5800 Fax: (877) 455-9587