

x and a member of the Ig-superfamily. It is expressed almost exclusively in eosinophils; however, basophils and mast cells can express it to a lower degree. Siglec-8 is a 54 kD transmembranal protein; the extracellular domain has one V-set Ig-like domain and two C2-set domains. The cytoplasmic domain has two immunoreceptor tyrosine-based inhibitor motifs (ITIM) that recruit SH2-family phosphatases after tyrosine phosphorylation. There are reports that siglec-8 inhibits the release of histamine and prostaglandin D2 mediated by the IgEFCR. This molecule is also involved in the induction of apoptosis.

Version: 19-17 Revision Date: 07/20/2022



Biotin anti-human Siglec-8 Antibody

Catalog# / Size	347120 / 100 µg
Clone	7C9
Regulatory Status	RUO
Other Names	Sialic acid-binding Ig-like lectin 8 (Siglec-8), Siglec8L, Sialoadhesin family member 2 (SAF2)
Isotype	Mouse IgG1, κ
Description	Siglec-8 is a lectin specific for 6'-sulfo-sLe ^x and a member of the Ig-superfamily. It is expressed almost exclusively in eosinophils; however, basophils and mast cells can express it to a lower degree. Siglec-8 is a 54 kD transmembranal protein; the extracellular domain has one V-set Ig-like domain and two C2-set domains. The cytoplasmic domain has two immunoreceptor tyrosine-based inhibitor motifs (ITIM) that recruit SH2-family phosphatases after tyrosine phosphorylation. There are reports that siglec-8 inhibits the release of histamine and prostaglandin D2 mediated by the IgEFCR. This molecule is also involved in the induction of apoptosis.

Product Details

Verified Reactivity	Human
Antibody Type	Monoclonal
Host Species	Mouse
Immunogen	Recombinant Siglec-8 fused to human IgG Fc
Formulation	Phosphate-buffered solution, pH 7.2, containing 0.09% sodium azide
Preparation	The antibody was purified by affinity chromatography and conjugated with biotin under optimal conditions.
Concentration	0.5 mg/mL
Storage & Handling	The antibody solution should be stored undiluted between 2°C and 8°C. Do not freeze.
Application	FC - Quality tested
Recommended Usage	Each lot of this antibody is quality control tested by immunofluorescent staining with flow cytometric analysis . For flow cytometric staining, the suggested use of this reagent is ≤ 0.5 µg per million cells in 100 µL volume. It is recommended that the reagent be titrated for optimal performance for each application.
Application References	1. Floyd H, <i>et al.</i> 2000. <i>J. Biol. Chem.</i> 275:861. 2. Wen T, <i>et al.</i> 2014. <i>J Immunol.</i> 192:5481. PubMed
RRID	AB_2924546 (BioLegend Cat. No. 347120)

Antigen Details

Structure	A lectin of 54 kD, belonging to the Ig-superfamily; has one V-set Ig-like domain and two C2-set domains; has a single transmembrane domain, and two immunoreceptor tyrosine-based inhibitor motifs (ITIM) in the cytoplasmic domain
Distribution	Eosinophils, basophils, mast cells
Function	Cell adhesion, signal transduction

Interaction	Phosphatases containing a SH2 domain
Bioactivity	Inhibition of IgE receptor-triggered histamine and prostaglandin D2 release, apoptosis
Cell Type	Basophils, Eosinophils, Mast cells
Biology Area	Cell Adhesion, Cell Biology, Immunology, Signal Transduction
Molecular Family	Adhesion Molecules, Siglec Molecules
Antigen References	<ol style="list-style-type: none"> 1. Bochner BS, <i>et al.</i> 2009. <i>Clin. Exp. Allergy</i>. 39:317. 2. Hudson SA, <i>et al.</i> 2009. <i>J. Pharmacol. Exp. Ther.</i> 330:608. 3. Nutku E, <i>et al.</i> 2005. <i>Biochem. Biophys. Res. Commun.</i> 336:918.
Gene ID	27181

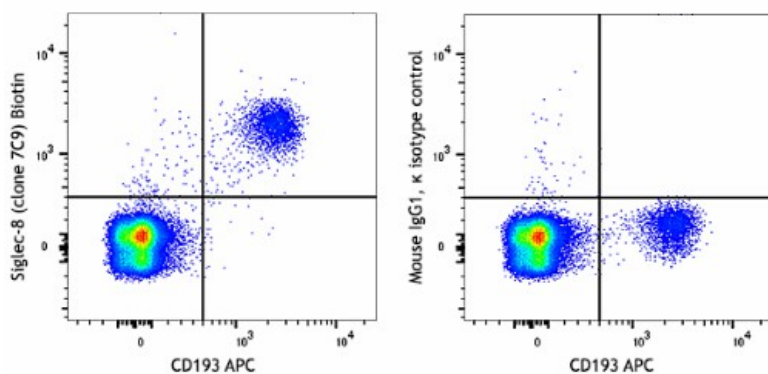
Related Protocols

[Cell Surface Flow Cytometry Staining Protocol](#)

Other Formats

Purified anti-human Siglec-8, PE anti-human Siglec-8, APC anti-human Siglec-8, PE/Dazzle™ 594 anti-human Siglec-8, PE/Cyanine7 anti-human Siglec-8, PerCP/Cyanine5.5 anti-human Siglec-8, TotalSeq™-C0199 anti-human Siglec-8, PE/Cyanine5 anti-human Siglec-8, TotalSeq™-D0199 anti-human Siglec-8, Biotin anti-human Siglec-8, Alexa Fluor® 647 anti-human Siglec-8, TotalSeq™-A0199 anti-human Siglec-8

Product Data



Human peripheral blood granulocytes were stained with anti-human CD193 (CCR3) APC and Siglec-8 (clone 7C9) Biotin (left), or biotin mouse IgG1, κ isotype control (right) followed by SAV-PE.

For research use only. Not for diagnostic use. Not for resale. BioLegend will not be held responsible for patent infringement or other violations that may occur with the use of our products.

*These products may be covered by one or more Limited Use Label Licenses (see the BioLegend Catalog or our website, www.biolegend.com/ordering#license). BioLegend products may not be transferred to third parties, resold, modified for resale, or used to manufacture commercial products, reverse engineer functionally similar materials, or to provide a service to third parties without written approval of BioLegend. By use of these products you accept the terms and conditions of all applicable Limited Use Label Licenses. Unless otherwise indicated, these products are for research use only and are not intended for human or animal diagnostic, therapeutic or commercial use.

BioLegend Inc., 8999 BioLegend Way, San Diego, CA 92121 www.biolegend.com
Toll-Free Phone: 1-877-Bio-Legend (246-5343) Phone: (858) 768-5800 Fax: (877) 455-9587