

Biotin anti-human TCR γ/δ Antibody

Catalog# / Size	331206 / 100 μ g
Clone	B1
Regulatory Status	RUO
Other Names	T cell receptor γ/δ , γ/δ TCR, TCR- γ/δ
Isotype	Mouse IgG1, κ
Description	T cell receptor (TCR) is a heterodimer consisting of an α and a β chain (TCR α/β) or a γ and a δ chain (TCR γ/δ). TCR γ/δ is involved in the recognition of certain bacterial, self-CD1 molecule, and tumor antigens bound to MHC class I. The γ/δ TCR associates with CD3 and is expressed on a subset of T cells found in the thymus, the intestinal epithelium, and the peripheral lymphoid tissues and peritoneum. Most γ/δ T cells are CD4 ⁺ /CD8 ⁻ , some are CD8 ⁺ . T cells expressing the γ/δ TCR have been shown to play a role in oral tolerance, innate immune response for some tumor cells, and autoimmune disease. It has been reported that γ/δ T cells also play a principal role in antigen presentation.

Product Details

Verified Reactivity	Human, Cynomolgus, Rhesus
Reported Reactivity	African Green, Baboon, Pigtailed Macaque
Antibody Type	Monoclonal
Host Species	Mouse
Formulation	Phosphate-buffered solution, pH 7.2, containing 0.09% sodium azide.
Preparation	The antibody was purified by affinity chromatography, and conjugated with biotin under optimal conditions.
Concentration	0.5 mg/ml
Storage & Handling	The antibody solution should be stored undiluted between 2°C and 8°C. Do not freeze.
Application	FC - Quality tested IHC - Reported in the literature, not verified in house
Recommended Usage	Each lot of this antibody is quality control tested by immunofluorescent staining with flow cytometric analysis . For flow cytometric staining, the suggested use of this reagent is ≤ 2.0 μ g per million cells in 100 μ l volume. It is recommended that the reagent be titrated for optimal performance for each application.
Application Notes	Clone B1 is also known as clone B1.1. Additional reported applications (for the relevant formats) include: immunohistochemical staining of acetone-fixed frozen sections ³ and paraffin-embedded sections ⁵ , <i>in vitro</i> blocking, and spatial biology (IBEX) ^{8,9} . The Ultra-LEAF™ purified antibody (Endotoxin < 0.01 EU/ μ g, Azide-Free, 0.2 μ m filtered) is recommended for highly sensitive assays (Cat. Nos. 331235 and 331236).
Application References	<ol style="list-style-type: none"> Rodriguez-Gago M, <i>et al.</i> 2001. <i>Transplantation</i>. 72:503. Lehmann FS, <i>et al.</i> 2002. <i>Am. J. Physiol. Gastrointest. Liver. Physiol.</i> 283:G481. (FC) Bordignon M, <i>et al.</i> 2008. <i>Mol. Med. Rep.</i> 1:485. (IHC) Conrad M, <i>et al.</i> 2007. <i>Cytom. Part A</i> 71A:925. (FC) Pollinger B, <i>et al.</i> 2011. <i>J. Immunol.</i> 186:2602. (IHC) Correia DV, <i>et al.</i> 2011. <i>Blood</i>. 118:992. (Block) Laurent AJ, <i>et al.</i> 2014. <i>PLoS One</i>. 9:103683. PubMed Radtke AJ, <i>et al.</i> 2020. <i>Proc Natl Acad Sci USA</i>. 117:33455-33465. (SB) PubMed Radtke AJ, <i>et al.</i> 2022. <i>Nat Protoc.</i> 17:378-401. (SB) PubMed
Product Citations	<ol style="list-style-type: none"> Ye Y, <i>et al.</i> 2022. <i>Nat Commun.</i> 13:6458. PubMed

2. He J, *et al.* 2020. *Cell Reports*. 29(9):2718-2730.e6.. [PubMed](#)
3. Omer OS, *et al.* 2020. *Methods Mol Biol*. 2121:199. [PubMed](#)

RRID AB_1089216 (BioLegend Cat. No. 331206)

Antigen Details

Structure	Ig superfamily, associates with CD3 complex
Distribution	T subset in thymus, intestinal epithelium, peripheral lymphoid tissues and peritoneum
Function	Antigen recognition
Ligand/Receptor	Some bacterial or tumor antigens bound MHC class I, CD1 molecule
Cell Type	Epithelial cells, T cells
Biology Area	Adaptive Immunity, Immunology
Molecular Family	TCRs
Antigen References	<ol style="list-style-type: none">1. Lanier LL, <i>et al.</i> 1987. <i>J. Clin. Immunol.</i> 7:429.2. Spencer J, <i>et al.</i> 1989. <i>Eur. J. Immunol.</i> 19:1335.3. Uyemura K, <i>et al.</i> 1991. <i>J. Exp. Med.</i> 174:683.4. Spada FM, <i>et al.</i> 2000. <i>J. Exp. Med.</i> 191:907.
Gene ID	6964 6965

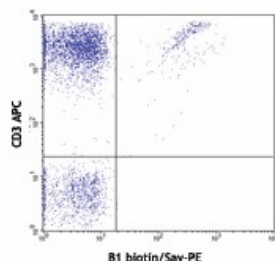
Related Protocols

[Cell Surface Flow Cytometry Staining Protocol](#)

Other Formats

Purified anti-human TCR γ/δ , Biotin anti-human TCR γ/δ , FITC anti-human TCR γ/δ , PE anti-human TCR γ/δ , APC anti-human TCR γ/δ , Alexa Fluor® 647 anti-human TCR γ/δ , Brilliant Violet 421™ anti-human TCR γ/δ , Brilliant Violet 510™ anti-human TCR γ/δ , PE/Cyanine7 anti-human TCR γ/δ , PerCP/Cyanine5.5 anti-human TCR γ/δ , PE/Dazzle™ 594 anti-human TCR γ/δ , APC/Fire™ 750 anti-human TCR γ/δ , TotalSeq™-A0139 anti-human TCR γ/δ , TotalSeq™-C0139 anti-human TCR γ/δ , TotalSeq™-B0139 anti-human TCR γ/δ , Ultra-LEAF™ Purified anti-human TCR γ/δ , PE/Fire™ 700 anti-human TCR γ/δ Antibody, Alexa Fluor® 660 anti-human TCR γ/δ Antibody, TotalSeq™-D0139 anti-human TCR γ/δ

Product Data



Human peripheral blood lymphocytes stained with CD3 APC and biotinylated B1, followed by Sav-PE

For research use only. Not for diagnostic use. Not for resale. BioLegend will not be held responsible for patent infringement or other violations that may occur with the use of our products.

*These products may be covered by one or more Limited Use Label Licenses (see the BioLegend Catalog or our website, www.biolegend.com/ordering#license). BioLegend products may not be transferred to third parties, resold, modified for resale, or used to manufacture commercial products, reverse engineer functionally similar materials, or to provide a service to third parties without written approval of BioLegend. By use of these products you accept the terms and conditions of all

applicable Limited Use Label Licenses. Unless otherwise indicated, these products are for research use only and are not intended for human or animal diagnostic, therapeutic or commercial use.

BioLegend Inc., 8999 BioLegend Way, San Diego, CA 92121 www.biolegend.com
Toll-Free Phone: 1-877-Bio-Legend (246-5343) Phone: (858) 768-5800 Fax: (877) 455-9587