

## FITC anti-human CD90 (Thy1) Antibody

<b>Catalog# / Size</b>	328107 / 25 tests 328108 / 100 tests
<b>Clone</b>	5E10
<b>Regulatory Status</b>	RUO
<b>Workshop</b>	HCDM listed
<b>Other Names</b>	Thy-1, Thy1
<b>Isotype</b>	Mouse IgG1, $\kappa$
<b>Description</b>	CD90 is a 25-35 kD GPI-anchored protein, also known as Thy-1. It belongs to the Ig superfamily. Human CD90 is expressed on neuronal cells, a subset of CD34 <sup>+</sup> cells, a subset of fetal liver cells and fetal thymocytes, fibroblasts, activated endothelial cells, and some leukemia cell lines. CD34 <sup>+</sup> CD90 <sup>+</sup> cells are primitive hematopoietic stem cells. It has been reported that Thy-1 binds with $\beta$ 2 and $\beta$ 3 integrins and plays bimodal roles in the regulation of cell adhesion and neurite outgrowth, and inhibits hematopoietic stem cells proliferation and differentiation.

### Product Details

---

<b>Verified Reactivity</b>	Human
<b>Reported Reactivity</b>	African Green, Baboon, Cynomolgus, Pigtailed Macaque, Rhesus, Pig
<b>Antibody Type</b>	Monoclonal
<b>Host Species</b>	Mouse
<b>Immunogen</b>	HEL cells
<b>Formulation</b>	Phosphate-buffered solution, pH 7.2, containing 0.09% sodium azide and BSA (origin USA)
<b>Preparation</b>	The antibody was purified by affinity chromatography, and conjugated with FITC under optimal conditions.
<b>Concentration</b>	Lot-specific (to obtain lot-specific concentration, please enter the lot number in our <a href="#">Concentration and Expiration Lookup</a> or <a href="#">Certificate of Analysis</a> online tools.)
<b>Storage &amp; Handling</b>	The antibody solution should be stored undiluted between 2°C and 8°C, and protected from prolonged exposure to light. <b>Do not freeze.</b>
<b>Application</b>	<a href="#">FC - Quality tested</a>
<b>Recommended Usage</b>	Each lot of this antibody is quality control tested by <a href="#">immunofluorescent staining with flow cytometric analysis</a> . For flow cytometric staining, the suggested use of this reagent is 5 $\mu$ l per million cells in 100 $\mu$ l staining volume or 5 $\mu$ l per 100 $\mu$ l of whole blood.
<b>Excitation Laser</b>	Blue Laser (488 nm)
<b>Application Notes</b>	Clone 5E10 recognizes an epitope on Thy-1 independent of its glycosylation, but is abolished under reducing conditions. <sup>4</sup> Additional reported (for the relevant formats) applications include: immunohistochemical staining of acetone-fixed frozen sections, immunoprecipitation <sup>1</sup> , and immunofluorescence <sup>3</sup> .
<b>Application References</b>	<ol style="list-style-type: none"> <li>1. Craig W, <i>et al.</i> 1993. <i>J. Exp. Med.</i> 177:1331. (IP)</li> <li>2. Gundlach CW 4th, <i>et al.</i> 2011. <i>Bioconjug. Chem.</i> 22:1706. (Pig Reactivity)</li> <li>3. Touboul C, <i>et al.</i> 2013. <i>J. Transl. Med.</i> 11:28. (IF)</li> <li>4. Bradley JE, <i>et al.</i> 2013. <i>Lab Invest.</i> 93:365. (Epitope)</li> <li>5. Donnenberg VS, <i>et al.</i> 2010. <i>Cytometry B. Clin. Cytom.</i> 5:287. (IHC)</li> </ol>
<b>Product Citations</b>	<ol style="list-style-type: none"> <li>1. Miksiunas R, <i>et al.</i> 2021. <i>Int J Mol Sci.</i> 22:.. <a href="#">PubMed</a></li> <li>2. Wu J, <i>et al.</i> 2022. <i>Nat Commun.</i> 13:676. <a href="#">PubMed</a></li> </ol>

3. Camerlingo R, *et al.* 2011. Lung Cancer. 72:23. [PubMed](#)
4. Peng K, *et al.* 2020. Sci Rep. 10:18433. [PubMed](#)
5. Yan H, *et al.* 2020. Adv Sci (Weinh). 7:1903516. [PubMed](#)
6. Xin Y, *et al.* 2021. Stem Cell Res Ther. 49:12. [PubMed](#)
7. Chen X, *et al.* 2022. Front Bioeng Biotechnol. 10:915181. [PubMed](#)
8. Yu XX, *et al.* 2021. Cell Res. 31:886. [PubMed](#)
9. Shi L, *et al.* 2021. Stem Cell Res Ther. 12:147. [PubMed](#)
10. Liu X, *et al.* 2020. Exp Ther Med. 1.258333333. [PubMed](#)
11. Radhakrishnan S, *et al.* 2019. Mol Med Rep. 20:813. [PubMed](#)
12. Li L, *et al.* 2015. Int J Pharmaceutics. 488: 1-11. [PubMed](#)
13. Guney-Esken G, *et al.* 2021. Stem Cell Res Ther. 12:287. [PubMed](#)
14. Vishnoi M, *et al.* 2018. Cancer Res. 78:5349. [PubMed](#)
15. Huang X, *et al.* 2019. Oxid Med Cell Longev. 2019:1305049. [PubMed](#)
16. Tu S, *et al.* 2020. Cellular Signalling. 73:109695. [PubMed](#)
17. Takao T, *et al.* 2022. STAR Protoc. 3:101786. [PubMed](#)
18. Qin XY, *et al.* 2020. Cell Death Dis. 0.504166667. [PubMed](#)
19. Hwang Y, *et al.* 2021. Int J Mol Sci. 22: . [PubMed](#)
20. Dregalla RC, *et al.* 2021. Stem Cell Res Ther. 12:547. [PubMed](#)
21. Nguyen MAT, *et al.* 2020. Immunohorizons. 0.465277778. [PubMed](#)
22. Liu Z, *et al.* 2021. Molecules. 26: . [PubMed](#)
23. Han X, *et al.* 2020. Int J Oral Sci. 12:10. [PubMed](#)
24. Sun W, *et al.* 2019. Exp Ther Med. 17:2199. [PubMed](#)
25. Hanse E, *et al.* 2017. Oncogene. 10.1038/onc.2017.36. [PubMed](#)
26. Liu Y, *et al.* 2022. iScience. 25:104405. [PubMed](#)
27. Yan K, *et al.* 2022. iScience. 25:104822. [PubMed](#)
28. Kinchen J *et al.* 2018. Cell. 175(2):372-386 . [PubMed](#)
29. Gao P, *et al.* 2017. Cytotechnology. 69:751. [PubMed](#)
30. Nguyen JT, *et al.* 2019. iScience. 17:190. [PubMed](#)
31. Yu C, *et al.* 2020. Sci Rep. 10:14521. [PubMed](#)
32. D'Agostino S, *et al.* 2021. Frontiers in Oncology. 10:600980. [PubMed](#)
33. Duan X, *et al.* 2022. Cell Biosci. 12:60. [PubMed](#)
34. Fawcner-Corbett D, *et al.* 2021. STAR Protoc. 2:100890. [PubMed](#)
35. Yang C *et al.* 2019. Int J Mol Med. 43(3):1395-1405 . [PubMed](#)
36. Zhang S, *et al.* 2021. Stem Cells Int. 6616240:2021. [PubMed](#)
37. Tidu F, *et al.* 2021. iScience. 24(6):102683. [PubMed](#)
38. Ayhan S, *et al.* 2021. Journal of Cell Science. 134(6):. [PubMed](#)
39. Cai S, *et al.* 2022. Cell Biosci. 12:115. [PubMed](#)
40. Zhang Y, *et al.* 2018. Stem Cells Int. 2018:7159465. [PubMed](#)
41. Zhang Y, *et al.* 2019. Aging (Albany NY). 11:12641. [PubMed](#)
42. Noz MP, *et al.* 2020. Elife. 9:00. [PubMed](#)
43. Guney-Esken G, *et al.* 2021. Methods Mol Biol. 2549:23. [PubMed](#)
44. Sun T, *et al.* 2019. Haematologica. 105:661. [PubMed](#)
45. Motedayyen H, *et al.* 2017. BMC Res Notes. . 10.1186/s13104-017-2880-6. [PubMed](#)
46. Narakornsak S, *et al.* 2017. Acta Histochemica. 10.1016/j.acthis.2017.04.006. [PubMed](#)
47. Keshtkar S, *et al.* 2021. Stem Cells Int. 8857457:2020. [PubMed](#)
48. Okamura G, *et al.* 2020. Int J Mol Sci. 22:00. [PubMed](#)
49. Zhang H, *et al.* 2017. Oncogene. 10.1038/onc.2016.512. [PubMed](#)
50. Xu L, *et al.* 2022. Int J Mol Sci. 23: . [PubMed](#)
51. Miksiunas R, *et al.* 2022. Cells. 11: . [PubMed](#)
52. He Z, *et al.* 2020. J Exp Clin Cancer Res. 39:140. [PubMed](#)
53. Aomatsu E, *et al.* 2014. Sci Rep. 4:3652. [PubMed](#)
54. Fawcner-Corbett D, *et al.* 2021. Cell. 184(3):810-826.e23. [PubMed](#)
55. He H, *et al.* 2019. J Cell Mol Med. 23:4139. [PubMed](#)
56. Zhu YP *et al.* 2018. Cell reports. 24(9):2329-2341 . [PubMed](#)
57. Meng Z, *et al.* 2013. Mol Cancer Ther. 12:2067. [PubMed](#)
58. Pauken CM, *et al.* 2021. Cancers (Basel). 13: . [PubMed](#)
59. Vishnoi M, *et al.* 2019. Mol Oncol. 13(9): 1913. [PubMed](#)
60. Putra I, *et al.* 2021. Transl Vis Sci Technol. 10:3. [PubMed](#)
61. Matheni C, *et al.* 2021. Cell J. 23:145. [PubMed](#)
62. Miksiunas R, *et al.* 2020. Int J Mol Sci. 21:00. [PubMed](#)
63. Luzuriaga J, *et al.* 2020. Biomedicines. 8:00. [PubMed](#)
64. Hong Y, *et al.* 2020. Aging Cell. 19:e13128. [PubMed](#)
65. Dinh HQ, *et al.* 2020. Immunity. 53(2):319-334.e6. [PubMed](#)
66. Chijimatsu R, *et al.* 2022. Regen Ther. 21:52. [PubMed](#)
67. Shang W, *et al.* 2022. Dis Markers. 2022:7286645. [PubMed](#)
68. Khanh VC, *et al.* 2021. Stem Cells Dev. 30:758. [PubMed](#)
69. Sprouse ML, *et al.* 2019. Int J Mol Sci. 20:8. [PubMed](#)
70. Thiel A, *et al.* 2015. Sci Rep. 5: 17685. [PubMed](#)

## RRID

AB\_893438 (BioLegend Cat. No. 328107)  
 AB\_893429 (BioLegend Cat. No. 328108)

## Antigen Details

---

### Structure

25-35 kD glycoprotein, Ig superfamily

<b>Distribution</b>	Subset of CD34 <sup>+</sup> hematopoietic stem cells, subset of fetal thymocytes, subset of fetal liver cells, fibroblast, activated endothelial cells, neurons and some leukemia cell lines
<b>Function</b>	Regulate hematopoiesis and neural cell growth, cell adhesion
<b>Ligand/Receptor</b>	β3 integrin, β2 integrin
<b>Cell Type</b>	Endothelial cells, Fibroblasts, Hematopoietic stem and progenitors, Leukemia, Mesenchymal Stem Cells, Neurons, Thymocytes
<b>Biology Area</b>	Immunology, Stem Cells
<b>Molecular Family</b>	CD Molecules
<b>Antigen References</b>	1. McKenzie JL, et al. 1981. <i>J. Immunol.</i> 126:843. 2. Avalos AM, et al. 2002. <i>Biol. Res.</i> 35:231. 3. Wetzel A, et al. 2004. <i>J. Immunol.</i> 172:3850.
<b>Gene ID</b>	<a href="#">7070</a>

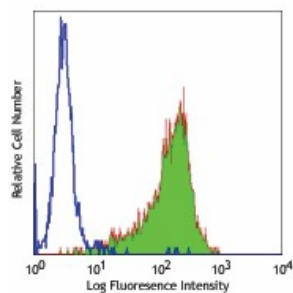
## Related Protocols

[Cell Surface Flow Cytometry Staining Protocol](#)

## Other Formats

PE/Cyanine7 anti-human CD90 (Thy1), Purified anti-human CD90 (Thy1), Biotin anti-human CD90 (Thy1), FITC anti-human CD90 (Thy1), PE anti-human CD90 (Thy1), PE/Cyanine5 anti-human CD90 (Thy1), APC anti-human CD90 (Thy1), Alexa Fluor® 647 anti-human CD90 (Thy1), PerCP/Cyanine5.5 anti-human CD90 (Thy1), Alexa Fluor® 700 anti-human CD90 (Thy1), Brilliant Violet 421™ anti-human CD90 (Thy1), Brilliant Violet 510™ anti-human CD90 (Thy1), Brilliant Violet 605™ anti-human CD90 (Thy1), Purified anti-human CD90 (Thy1) (Maxpar® Ready), APC/Cyanine7 anti-human CD90 (Thy1), PE/Dazzle™ 594 anti-human CD90 (Thy1), APC/Fire™ 750 anti-human CD90 (Thy1), Brilliant Violet 711™ anti-human CD90 (Thy1), TotalSeq™-A0060 anti-human CD90 (Thy1), Brilliant Violet 785™ anti-human CD90 (Thy1), Brilliant Violet 650™ anti-human CD90 (Thy1), TotalSeq™-C0060 anti-human CD90 (Thy1), TotalSeq™-B0060 anti-human CD90 (Thy1), TotalSeq™-D0060 anti-human CD90 (Thy1)

## Product Data



Human erythroleukemic cell line (HEL)  
stained with 5E10 FITC

For research use only. Not for diagnostic use. Not for resale. BioLegend will not be held responsible for patent infringement or other violations that may occur with the use of our products.

\*These products may be covered by one or more Limited Use Label Licenses (see the BioLegend Catalog or our website, [www.biolegend.com/ordering#license](http://www.biolegend.com/ordering#license)). BioLegend products may not be transferred to third parties, resold, modified for resale, or used to manufacture commercial products, reverse engineer functionally similar materials, or to provide a service to third parties without written approval of BioLegend. By use of these products you accept the terms and conditions of all applicable Limited Use Label Licenses. Unless otherwise indicated, these products are for research use only and are not intended for human or animal diagnostic, therapeutic or commercial use.

BioLegend Inc., 8999 BioLegend Way, San Diego, CA 92121 [www.biolegend.com](http://www.biolegend.com)  
Toll-Free Phone: 1-877-Bio-Legend (246-5343) Phone: (858) 768-5800 Fax: (877) 455-9587