

LEGENDplex™ Human TNF- α Capture Bead B7, 13X

Catalog# / Size	740711 / 100 tests (270 μ L)
Regulatory Status	RUO
Other Names	Tumor Necrosis Factor, Tumor Necrosis Factor Ligand Superfamily Member 2, Cachectin, TNF-Alpha, TNFSF2, TNF-A, TNFA, Tumor Necrosis Factor Ligand 1F, Tumor Necrosis Factor-Alpha, TNF Macrophage-Derived, TNF Monocyte-Derived, APC1 Protein, TNLG1F, DIF
Description	<p>The LegendPlex™ Human Angiogenesis Panel 1 V02 Mix and Match Subpanel includes beads for 10 analytes: IL-6, Angiopoietin-1, Angiopoietin-2, EGF, FGF-basic, CXCL8 (IL-8), PECAM-1, PIGF, VEGF, TNF-α. These beads are recommended for use with each other and the following reagent in a Mix and Match Assay:</p> <p>741216 LEGENDplex™ Human Angiogenesis Panel 1 Detection Abs V02 740699 LEGENDplex™ Human Angiogenesis Panel 1 Standard V02 741218 LEGENDplex™ Buffer Set I1 740377 LEGENDplex™ Filter Plate OR 740379 LEGENDplex™ V-bottom Plate</p>

Product Details

Verified Reactivity	Human
Application	Multiplex
	Learn more about LEGENDplex™ at biolegend.com/legendplex
	Download the LEGENDplex™ software here .

Antigen Details

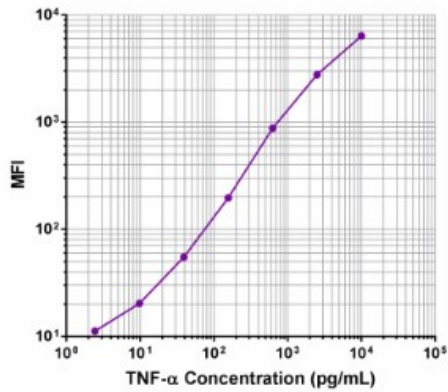
Biology Area	Cell Biology, Immunology, Neuroinflammation, Neuroscience
Molecular Family	Cytokines/Chemokines
Gene ID	7124

Related Protocols

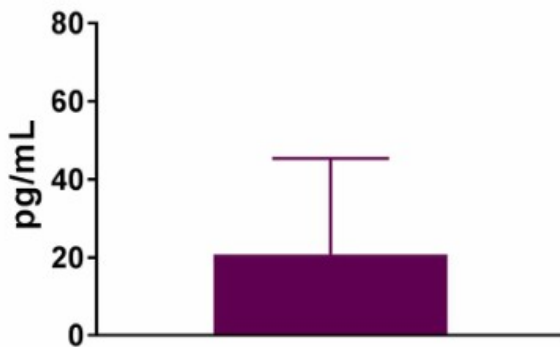
[LEGENDplex™ Laboratory Protocol - Video](#)

Product Data

**LEGENDplex™ Human TNF- α Capture Bead B7
Representative Standard Curve**



TNF- α



Data generated using the following
LEGENDplex™ Mix & Match Reagents:

- Human TNF- α Capture Bead B7, 13X (Cat. # 740711)
- Human Angiogenesis Panel 1 Detection Antibodies (Cat. # 740700)
- Human Angiogenesis Panel 1 Standard (Cat. # 740699)
- Buffer Set I (Cat. # 740623)

Note: Data acquired on a BD FACSCalibur™ flow cytometer.

Human plasma samples (n = 80) were quantified using the following
LEGENDplex™ Mix & Match Reagents:

- Human TNF- α Capture Bead B7, 13X (Cat. # 740711)
- Human Angiogenesis Panel 1 Detection Antibodies (Cat. # 740700)
- Human Angiogenesis Panel 1 Standard (Cat. # 740699)
- Buffer Set I (Cat. # 740623)

Data are presented as Mean + SD. Plasma samples were provided courtesy of Professor Huaizhu Wu, Baylor College of Medicine.

For research use only. Not for diagnostic use. Not for resale. BioLegend will not be held responsible for patent infringement or other violations that may occur with the use of our products.

*These products may be covered by one or more Limited Use Label Licenses (see the BioLegend Catalog or our website, www.biolegend.com/ordering#license). BioLegend products may not be transferred to third parties, resold, modified for resale, or used to manufacture commercial products, reverse engineer functionally similar materials, or to provide a service to third parties without written approval of BioLegend. By use of these products you accept the terms and conditions of all applicable Limited Use Label Licenses. Unless otherwise indicated, these products are for research use only and are not intended for human or animal diagnostic, therapeutic or commercial use.

BioLegend Inc., 8999 BioLegend Way, San Diego, CA 92121 www.biolegend.com
Toll-Free Phone: 1-877-Bio-Legend (246-5343) Phone: (858) 768-5800 Fax: (877) 455-9587