

PE anti-human CD11c Antibody

Catalog# / Size	371503 / 25 tests 371504 / 100 tests
Clone	S-HCL-3
Regulatory Status	RUO
Other Names	Integrin α X subunit, CR4, p150, ITGAX
Isotype	Mouse IgG2b, κ
Description	CD11c is a 145-150 kD type I transmembrane glycoprotein also known as integrin α X and CR4. CD11c non-covalently associates with integrin β ₂ (CD18) and is expressed on monocytes/macrophages, dendritic cells, granulocytes, NK cells, and subsets of T and B cells. CD11c has been reported to play a role in adhesion and CTL killing through its interactions with fibrinogen, CD54, and iC3b.

Product Details

Verified Reactivity	Human
Antibody Type	Monoclonal
Host Species	Mouse
Immunogen	Spleen cells from patient diagnosed with hairy cell leukemia.
Formulation	Phosphate-buffered solution, pH 7.2, containing 0.09% sodium azide and BSA (origin USA)
Preparation	The antibody was purified by affinity chromatography and conjugated with PE under optimal conditions.
Concentration	Lot-specific (to obtain lot-specific concentration, please enter the lot number in our Concentration and Expiration Lookup or Certificate of Analysis online tools.)
Storage & Handling	The antibody solution should be stored undiluted between 2°C and 8°C, and protected from prolonged exposure to light. Do not freeze.
Application	FC - Quality tested
Recommended Usage	Each lot of this antibody is quality control tested by immunofluorescent staining with flow cytometric analysis . For flow cytometric staining, the suggested use of this reagent is 5 μ l per million cells in 100 μ l staining volume or 5 μ l per 100 μ l of whole blood.
Excitation Laser	Blue Laser (488 nm) Green Laser (532 nm)/Yellow-Green Laser (561 nm)
Application Notes	Additional reported applications (for the relevant formats) include: immunohistochemistry on frozen tissue sections ^{1,2,3,4} and immunoprecipitation ¹ .
Application References	<ol style="list-style-type: none">1. Schwarting R, <i>et al.</i> 1985. <i>Blood</i> 65:974.2. Knowles DM, <i>et al.</i> 1990. <i>Am. J. Pathol.</i> 136:29.3. Vandenabeele S, <i>et al.</i> 2001. <i>Blood</i> 97:1733.4. Shaw JL, <i>et al.</i> 2011. <i>J. Reprod. Immunol.</i> 89:84.
Product Citations	<ol style="list-style-type: none">1. Zheng G, <i>et al.</i> 2021. <i>Signal Transduct Target Ther.</i> 6:236. PubMed2. Richert-Spuhler LE, <i>et al.</i> 2021. <i>Cell Reports Medicine.</i> 2(6):100322. PubMed3. Chruewkamlow N, <i>et al.</i> 2021. <i>Stem Cell Res Ther.</i> 12:520. PubMed
RRID	AB_2616899 (BioLegend Cat. No. 371503) AB_2616900 (BioLegend Cat. No. 371504)

Antigen Details

Structure	Integrin, type I transmembrane glycoprotein, associates with integrin $\beta 2$ (CD18), 145-150 kD.
Distribution	Myeloid, dendritic cells, NK cells, B cells and T cell subsets.
Function	Adhesion and CTL killing.
Interaction	Interacts with fibrinogen, CD54, and iC3b.
Ligand/Receptor	CD54, fibrinogen, iC3b, ICAM-1, ICAM-4
Cell Type	B cells, Dendritic cells, NK cells, T cells
Biology Area	Costimulatory Molecules, Immunology
Molecular Family	CD Molecules
Antigen References	1. Petty HR, Todd RF 3rd. 1996. <i>Immunol. Today</i> 17:209. 2. Springer T. 1994. <i>Cell</i> 76:301. 3. Ihanus E, et al. 2007. <i>Blood</i> 109:802-10.
Gene ID	3687

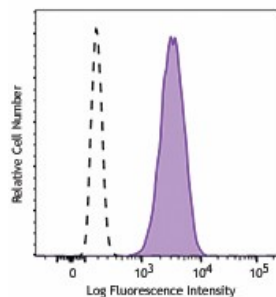
Related Protocols

[Cell Surface Flow Cytometry Staining Protocol](#)

Other Formats

Purified anti-human CD11c, APC anti-human CD11c, PE anti-human CD11c, PE/Cyanine7 anti-human CD11c, Brilliant Violet 421™ anti-human CD11c, APC/Fire™ 750 anti-human CD11c, FITC anti-human CD11c, PerCP/Cyanine5.5 anti-human CD11c, Brilliant Violet 510™ anti-human CD11c, TotalSeq™-A0053 anti-human CD11c, TotalSeq™-C0053 anti-human CD11c, TotalSeq™-B0053 anti-human CD11c, Alexa Fluor® 647 anti-human CD11c Antibody, TotalSeq™-D0053 anti-human CD11c

Product Data



Human peripheral blood granulocytes were stained with CD11c (clone S-HCL-3) PE (filled histogram) or mouse IgG2b, κ PE isotype control (open histogram).

For research use only. Not for diagnostic use. Not for resale. BioLegend will not be held responsible for patent infringement or other violations that may occur with the use of our products.

*These products may be covered by one or more Limited Use Label Licenses (see the BioLegend Catalog or our website, www.biolegend.com/ordering#license). BioLegend products may not be transferred to third parties, resold, modified for resale, or used to manufacture commercial products, reverse engineer functionally similar materials, or to provide a service to third parties without written approval of BioLegend. By use of these products you accept the terms and conditions of all applicable Limited Use Label Licenses. Unless otherwise indicated, these products are for research use only and are not intended for human or animal diagnostic, therapeutic or commercial use.

BioLegend Inc., 8999 BioLegend Way, San Diego, CA 92121 www.biolegend.com
Toll-Free Phone: 1-877-Bio-Legend (246-5343) Phone: (858) 768-5800 Fax: (877) 455-9587