

PE/Cyanine7 anti-human CD158 (KIR2DL1/S1/S3/S5) Antibody

Catalog# / Size	339511 / 25 tests 339512 / 100 tests
Clone	HP-MA4
Regulatory Status	RUO
Other Names	CD158a, CD158g, CD158h, KIR2DL1, KIR2DS1, KIR2DS3, KIR2DS5
Isotype	Mouse IgG2b, κ
Description	CD158 molecules, also known as KIRs (killer cell immunoglobulin-like receptors), are a family of transmembrane proteins with either two (KIR2D) or three (KIR3D) Ig-like extracellular domains. Some KIRs with long cytoplasmic domains contain ITIMs and possess inhibitory functions and others with short cytoplasmic region lack ITIM and have activation functions. 14 polymorphic KIR genes have been reported in humans. CD158 is mainly expressed on a subset of NK cells and a small population of CD8 ⁺ T cells. HLA-C is the ligand of CD158a/h.

Product Details

Verified Reactivity	Human
Reported Reactivity	Baboon, Cynomolgus
Antibody Type	Monoclonal
Host Species	Mouse
Immunogen	Human NK cell clone LB2
Formulation	Phosphate-buffered solution, pH 7.2, containing 0.09% sodium azide and BSA (origin USA)
Preparation	The antibody was purified by affinity chromatography and conjugated with PE/Cyanine7 under optimal conditions.
Concentration	Lot-specific (to obtain lot-specific concentration, please enter the lot number in our Concentration and Expiration Lookup or Certificate of Analysis online tools.)
Storage & Handling	The antibody solution should be stored undiluted between 2°C and 8°C, and protected from prolonged exposure to light. Do not freeze.
Application	FC - Quality tested
Recommended Usage	Each lot of this antibody is quality control tested by immunofluorescent staining with flow cytometric analysis . For flow cytometric staining, the suggested use of this reagent is 5 µl per million cells in 100 µl staining volume or 5 µl per 100 µl of whole blood.
Excitation Laser	Blue Laser (488 nm) Green Laser (532 nm)/Yellow-Green Laser (561 nm)
Application Notes	mAb HP-MA4 reacts with KIR2DL1 (CD158a), KIR2DS1 (CD158h), KIR2DS3, and KIR2DS5 (CD158g). Additional reported applications include: inhibits NK cell mediated cytotoxicity and immunoprecipitation. This clone has been tested in-house and determined to not be suitable for applications in immunohistochemistry of paraffin-embedded tissue sections (IHC-P).
Additional Product Notes	BioLegend is in the process of converting the name PE/Cy7 to PE/Cyanine7. The dye molecule remains the same, so you should expect the same quality and performance from our PE/Cyanine7 products. Please contact Technical Service if you have any questions.
Application References	1. De Miguel M and M. Lopez-Botet. 2002. <i>Inmunologia</i> . 21:187 2. Goodridge JP, et al. 2013. <i>J. Immunol.</i> 191:3553. PubMed

Product Citations

1. Chen P, *et al.* 2021. Front Immunol. 12:689019. [PubMed](#)
2. Lu H, *et al.* 2020. Am J Reprod Immunol. 83:. [PubMed](#)
3. Grutza R, *et al.* 2020. J Immunol. 204:2910. [PubMed](#)

RRID

AB_2565578 (BioLegend Cat. No. 339511)
AB_2565579 (BioLegend Cat. No. 339512)

Antigen Details

Structure	Contains two Ig-like extracellular domains, 58/50 kD
Distribution	Subset of NK cells and a small subset of CD8+ T cells
Function	Inhibits NK cell function, play a role in self-tolerance.
Ligand/Receptor	HLA-C
Cell Type	NK cells, T cells
Biology Area	Immunology, Inhibitory Molecules
Molecular Family	CD Molecules
Antigen References	1. Zola H, <i>et al.</i> eds. 2007. <i>Leukocyte and Stromal Cell Molecules: The CD Markers</i> . Wiley-Liss A John Wiley & Sons Inc, Publication
Gene ID	3802 3810 3808 3806

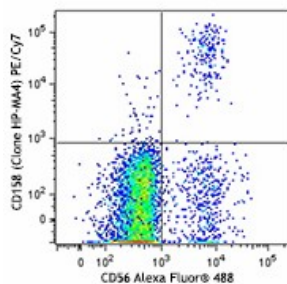
Related Protocols

[Cell Surface Flow Cytometry Staining Protocol](#)

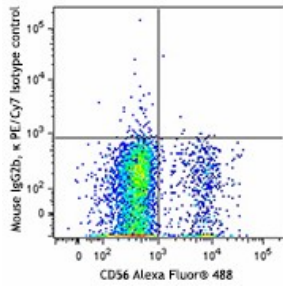
Other Formats

PE anti-human CD158 (KIR2DL1/S1/S3/S5), Purified anti-human CD158 (KIR2DL1/S1/S3/S5), FITC anti-human CD158 (KIR2DL1/S1/S3/S5), PerCP/Cyanine5.5 anti-human CD158 (KIR2DL1/S1/S3/S5), PE/Cyanine7 anti-human CD158 (KIR2DL1/S1/S3/S5), APC anti-human CD158 (KIR2DL1/S1/S3/S5), TotalSeq™-A0420 anti-human CD158 (KIR2DL1/S1/S3/S5), TotalSeq™-C0420 anti-human CD158 (KIR2DL1/S1/S3/S5), APC/Fire™ 750 anti-human CD158 (KIR2DL1/S1/S3/S5), TotalSeq™-B0420 anti-human CD158 (KIR2DL1/S1/S3/S5) Antibody

Product Data



Human peripheral blood lymphocytes were stained with CD56 Alexa Fluor® 488 and CD158 (clone HP-MA4) PE/Cyanine7 (top) or mouse IgG2b, κ PE/Cyanine7 isotype control (bottom).



For research use only. Not for diagnostic use. Not for resale. BioLegend will not be held responsible for patent infringement or other violations that may occur with the use of our products.

*These products may be covered by one or more Limited Use Label Licenses (see the BioLegend Catalog or our website, www.biolegend.com/ordering#license). BioLegend products may not be transferred to third parties, resold, modified for resale, or used to manufacture commercial products, reverse engineer functionally similar materials, or to provide a service to third parties without written approval of BioLegend. By use of these products you accept the terms and conditions of all applicable Limited Use Label Licenses. Unless otherwise indicated, these products are for research use only and are not intended for human or animal diagnostic, therapeutic or commercial use.

BioLegend Inc., 8999 BioLegend Way, San Diego, CA 92121 www.biolegend.com
Toll-Free Phone: 1-877-Bio-Legend (246-5343) Phone: (858) 768-5800 Fax: (877) 455-9587