

## PE/Dazzle™ 594 anti-human CD155 (PVR) Antibody

<b>Catalog# / Size</b>	337615 / 25 tests 337616 / 100 tests
<b>Clone</b>	SKII.4
<b>Regulatory Status</b>	RUO
<b>Other Names</b>	Poliovirus receptor (PVR), nectin-like 5
<b>Isotype</b>	Mouse IgG1, κ
<b>Description</b>	CD155, known as poliovirus receptor (PVR) or nectin-like 5, is a 70 kD type I transmembrane glycoprotein. It is a nectin-like molecule belonging to Ig superfamily. CD155 is primarily found on endothelial cells, monocytes, epithelia and central nervous system. CD155 is an adhesion molecule involved in cell-cell and cell-matrix adhesion through interaction with CD226, CD96 (Tactile), nectin-1, -2, and -3 (CD111, CD112, CD113), and vitronectin. It also serves as a receptor for poliovirus and cytomegalovirus.

### Product Details

---

<b>Verified Reactivity</b>	Human
<b>Antibody Type</b>	Monoclonal
<b>Host Species</b>	Mouse
<b>Immunogen</b>	SK-N-S1 human neuroblastoma cells.
<b>Formulation</b>	Phosphate-buffered solution, pH 7.2, containing 0.09% sodium azide and BSA (origin USA)
<b>Preparation</b>	The antibody was purified by affinity chromatography and conjugated with PE/Dazzle™ 594 under optimal conditions.
<b>Concentration</b>	Lot-specific (to obtain lot-specific concentration, please enter the lot number in our <a href="#">Concentration and Expiration Lookup</a> or <a href="#">Certificate of Analysis</a> online tools.)
<b>Storage &amp; Handling</b>	The antibody solution should be stored undiluted between 2°C and 8°C, and protected from prolonged exposure to light. <b>Do not freeze.</b>
<b>Application</b>	<a href="#">FC - Quality tested</a>
<b>Recommended Usage</b>	Each lot of this antibody is quality control tested by <a href="#">immunofluorescent staining with flow cytometric analysis</a> . For flow cytometric staining, the suggested use of this reagent is 5 µl per million cells in 100 µl staining volume or 5 µl per 100 µl of whole blood.  * PE/Dazzle™ 594 has a maximum excitation of 566 nm and a maximum emission of 610 nm.
<b>Excitation Laser</b>	Blue Laser (488 nm) Green Laser (532 nm)/Yellow-Green Laser (561 nm)
<b>Application Notes</b>	Additional reported applications include: block binding of PVR ligands CD226 and CD96 to PVR, immunoprecipitation, and western blot.
<b>Application References</b>	1. Fuchs A, <i>et al.</i> 2004. <i>J. Immunol.</i> 172:3994
<b>RRID</b>	AB_2565748 (BioLegend Cat. No. 337615) AB_2565752 (BioLegend Cat. No. 337616)

### Antigen Details

---

<b>Structure</b>	Type I glycoprotein, Ig superfamily
------------------	-------------------------------------

<b>Distribution</b>	Monocytes, endothelial cells, epithelia, central nervous system
<b>Function</b>	Cell-cell and cell-matrix adhesion
<b>Ligand/Receptor</b>	CD226, CD96, nectin-1, -2, and -3, vitronectin, CD155, poliovirus
<b>Cell Type</b>	Endothelial cells, Epithelial cells, Monocytes, Tregs
<b>Biology Area</b>	Immunology, Innate Immunity
<b>Molecular Family</b>	Adhesion Molecules, CD Molecules, Immune Checkpoint Receptors
<b>Antigen References</b>	<ol style="list-style-type: none"> <li>1. Zola H, <i>et al.</i> eds. 2007. <i>Leukocyte and Stromal Cell Molecules: The CD Markers</i>. Wiley-Liss A John Wiley &amp; Sons Inc, Publication</li> <li>2. Bottino PD, <i>et al.</i> 2005. <i>Mol. Immunol.</i> 42:463</li> <li>3. Tahara-Hanaoka S, <i>et al.</i> 2004. <i>Intl. Immunol.</i> 16:533</li> </ol>
<b>Gene ID</b>	<a href="#">5817</a>

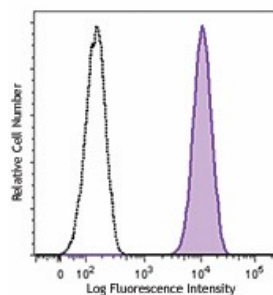
## Related Protocols

[Cell Surface Flow Cytometry Staining Protocol](#)

## Other Formats

PE anti-human CD155 (PVR), Purified anti-human CD155 (PVR), PerCP/Cyanine5.5 anti-human CD155 (PVR), PE/Cyanine7 anti-human CD155 (PVR), PE/Dazzle™ 594 anti-human CD155 (PVR), APC anti-human CD155 (PVR), Alexa Fluor® 647 anti-human CD155 (PVR), Biotin anti-human CD155 (PVR), TotalSeq™-A0023 anti-human CD155 (PVR), APC/Fire™ 750 anti-human CD155 (PVR), Brilliant Violet 510™ anti-human CD155 (PVR), Brilliant Violet 421™ anti-human CD155 (PVR), FITC anti-human CD155 (PVR), Alexa Fluor® 700 anti-human CD155 (PVR), TotalSeq™-B0023 anti-human CD155 (PVR), TotalSeq™-C0023 anti-human CD155 (PVR), TotalSeq™-D0023 anti-human CD155 (PVR)

## Product Data



U937 cells were stained with CD155 (clone SK11.4) PE/Dazzle™ 594 (filled histogram) or mouse IgG1, κ PE/Dazzle™ 594 isotype control (open histogram).

For research use only. Not for diagnostic use. Not for resale. BioLegend will not be held responsible for patent infringement or other violations that may occur with the use of our products.

\*These products may be covered by one or more Limited Use Label Licenses (see the BioLegend Catalog or our website, [www.biolegend.com/ordering#license](http://www.biolegend.com/ordering#license)). BioLegend products may not be transferred to third parties, resold, modified for resale, or used to manufacture commercial products, reverse engineer functionally similar materials, or to provide a service to third parties without written approval of BioLegend. By use of these products you accept the terms and conditions of all applicable Limited Use Label Licenses. Unless otherwise indicated, these products are for research use only and are not intended for human or animal diagnostic, therapeutic or commercial use.

BioLegend Inc., 8999 BioLegend Way, San Diego, CA 92121 [www.biolegend.com](http://www.biolegend.com)  
Toll-Free Phone: 1-877-Bio-Legend (246-5343) Phone: (858) 768-5800 Fax: (877) 455-9587