

Purified anti-human CD163 Recombinant Antibody

Catalog# / Size	364302 / 100 µg
Clone	QA19A16
Regulatory Status	RUO
Other Names	GHI/61, M130, RM3/1, p155, Hemoglobin/Haptoglobin Complex Receptor, macrophage-associated antigen, ED2(rat)
Isotype	Mouse IgG1, κ
Description	CD163 is a member of the group B scavenger receptor cysteine-rich superfamily, also known as GHI/61, M130, RM3/1, p155, hemoglobin-haptoglobin complex receptor, or macrophage-associated antigen. It is a 134 kD (non-reduced)/155 kD (reduced) glycoprotein primarily expressed on macrophages, Kupffer cells, monocytes, a subset of dendritic cells, and a subset of hematopoietic stem/progenitor cells. CD163 binds to haptoglobin-hemoglobin complex and TWEAK, and plays a role in clearing hemoglobin and regulating cytokine production by macrophages. Membrane CD163 can be cleaved by metalloproteinases (MMP), resulting in a soluble form. Elevated serum level of sCD163 has been implicated in many kinds of inflammatory diseases.

Product Details

Verified Reactivity	Human
Antibody Type	Recombinant
Host Species	Mouse
Formulation	Phosphate-buffered solution, pH 7.2, containing 0.09% sodium azide
Preparation	The antibody was purified by affinity chromatography.
Concentration	0.5 mg/mL
Storage & Handling	The antibody solution should be stored undiluted between 2°C and 8°C.
Application	FC - Quality tested IHC-P - Verified
Recommended Usage	Each lot of this antibody is quality control tested by immunofluorescent staining with flow cytometric analysis . For flow cytometric staining, the suggested use of this reagent is ≤ 0.5 µg per million cells in 100 µL volume. For immunohistochemistry, a concentration range of 5.0 - 10.0 µg/mL is suggested. It is recommended that the reagent be titrated for optimal performance for each application.
RRID	AB_2892439 (BioLegend Cat. No. 364302)

Antigen Details

Structure	134 kD (non-reduced)/155 kD (reduced) glycoprotein, scavenger receptor superfamily
Distribution	Monocytes, macrophages, Kuffer cells, subset of dendritic cells, subset of hematopoietic stem/progenitor cells
Function	Clearance of haptoglobin-hemoglobin complex, regulation of cytokine production by macrophages
Ligand/Receptor	Haptoglobin-hemoglobin complex, TWEAK
Antigen References	<ol style="list-style-type: none">1. Roth J, <i>et al.</i> 1994. <i>Transplantation</i>. 57:1272. Van den Heuvel MM, <i>et al.</i> 1999. <i>J Leukoc Biol.</i> 66:858

3. Sulahian TH, et al. 2000. *Cytokines*. 12:1312
4. Fabrick BO, et al. 2007. *J Neuroimmunol*. 187:179

Gene ID [9332](#)

Related Protocols

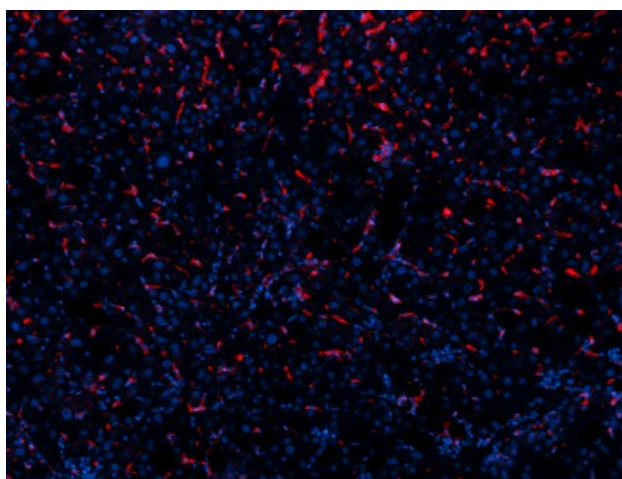
[Cell Surface Flow Cytometry Staining Protocol](#)

[Immunohistochemistry Protocol for Paraffin-Embedded Sections](#)

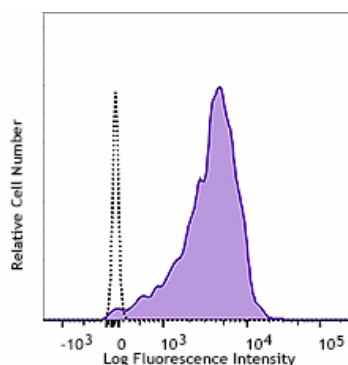
Other Formats

Purified anti-human CD163 Recombinant Antibody, Alexa Fluor® 594 anti-human CD163 Recombinant, Alexa Fluor® 647 anti-human CD163 Recombinant Antibody

Product Data



Human paraffin-embedded liver tissue slices were prepared with a standard protocol of deparaffination and rehydration. Antigen retrieval was done with Citrate buffer 1X pH 6.0 at 95°C for 40 minutes. Tissue was washed with PBS/ 0.05% Tween20 twice for five minutes, blocked with 5% FBS and 0.2% gelatin for 30 minutes. Then, the tissue was stained with 10 µg/mL of purified anti-human CD163 (clone QA19A16) at 4°C overnight. On the next day, the tissue was washed twice with PBS and stained with goat anti-mouse secondary antibody (Poly4053) Alexa Fluor® 594 (red) for two hours at room temperature. The nuclei were counter staining with DAPI (blue). The image was scanned with a 10X objective and stitched with software.



Human lysed washed blood stained with CD163 (clone QA19A16) purified (filled histogram) or mouse IgG1, κ isotype control (clone MOPC-21) purified (open histogram) followed by anti-mouse IgG PE.

For research use only. Not for diagnostic use. Not for resale. BioLegend will not be held responsible for patent infringement or other violations that may occur with the use of our products.

*These products may be covered by one or more Limited Use Label Licenses (see the BioLegend Catalog or our website, www.biolegend.com/ordering#license). BioLegend products may not be transferred to third parties, resold, modified for resale, or used to manufacture commercial products, reverse engineer functionally similar materials, or to provide a service to third parties without written approval of BioLegend. By use of these products you accept the terms and conditions of all applicable Limited Use Label Licenses. Unless otherwise indicated, these products are for research use only and are not intended for human or animal diagnostic, therapeutic or commercial use.

BioLegend Inc., 8999 BioLegend Way, San Diego, CA 92121 www.biolegend.com
Toll-Free Phone: 1-877-Bio-Legend (246-5343) Phone: (858) 768-5800 Fax: (877) 455-9587

