

Purified anti-human CD223 (LAG-3) Antibody

Catalog# / Size	369302 / 100 µg
Clone	11C3C65
Regulatory Status	RUO
Other Names	CD223, LAG-3, LAG3, lymphocyte-activation gene-3
Isotype	Mouse IgG1, κ
Description	CD223, also known as LAG-3, is a 70 kD type I transmembrane glycoprotein that is involved in T-cell signaling. Similar to CD4, CD223 binds MHC class II, but with a higher affinity. CD223 negatively regulates T-cell activation. It is expressed by activated T-cells and natural killer cells (NKs), as well as regulatory T-cells. It is transiently expressed on the surface of activated T-cells in acute conditions but high expression is maintained under tolerizing conditions. CD223 deficiency results in reduced tumor growth. CD223 and PD-1 can act in synergy and reverse exhausted phenotypes, improve tumor rejection, and control viral load.

Product Details

Verified Reactivity	Human
Antibody Type	Monoclonal
Host Species	Mouse
Immunogen	Human LAG-3 transfected cells.
Formulation	Phosphate-buffered solution, pH 7.2, containing 0.09% sodium azide.
Preparation	The antibody was purified by affinity chromatography.
Concentration	0.5 mg/ml
Storage & Handling	The antibody solution should be stored undiluted between 2°C and 8°C.
Application	FC - Quality tested
Recommended Usage	Each lot of this antibody is quality control tested by immunofluorescent staining with flow cytometric analysis . For flow cytometric staining, the suggested use of this reagent is ≤0.5 µg per million cells in 100 µl volume. It is recommended that the reagent be titrated for optimal performance for each application.
Application Notes	The staining of clone 11C3C65 cannot be blocked by clone 7H2C65, which is another anti-human CD223 (LAG-3) antibody.
Product Citations	<ol style="list-style-type: none">1. Gide TN, <i>et al.</i> 2019. Cancer Cell. 35:238. PubMed2. Tian Y, <i>et al.</i> 2019. Cell Rep. 29:4482. PubMed3. Liu F, <i>et al.</i> 2020. J Immunother Cancer. 8:.. PubMed4. O'Boyle KC, <i>et al.</i> 2020. Methods Mol Biol. 2111:1. PubMed5. Cobb DA, <i>et al.</i> 2022. J Immunother Cancer. 10:.. PubMed6. Schulte-Schrepping J, <i>et al.</i> 2020. Cell. 182(6):1419-1440. PubMed7. Macmillan ML, <i>et al.</i> 2021. Blood Adv. 5:1425. PubMed8. Georg P, <i>et al.</i> 2022. Cell. 185:493. PubMed
RRID	AB_2616876 (BioLegend Cat. No. 369302)

Antigen Details

Structure	70 kD transmembrane glycoprotein, Ig superfamily, highly homologous to CD4.
Distribution	Activated T-cells and natural killer cells (NKs) and regulatory T cells.

Function	Negatively regulates T-cell activation.
Ligand/Receptor	Binds MHC class II molecules.
Cell Type	Dendritic cells, NK cells, T cells, Tregs
Biology Area	Immunology, Inhibitory Molecules
Molecular Family	CD Molecules, Immune Checkpoint Receptors
Antigen References	<ol style="list-style-type: none"> 1. Castelli C, <i>et al.</i> 2014. <i>Oncoimmunology</i>. 3(11):e967146. 2. Poirier N, <i>et al.</i> 2011. <i>Clin. Exp. Immunol.</i> 164:265. 3. Juno JA, <i>et al.</i> 2015. <i>Retrovirology</i>. 12:17. 4. Casati C, <i>et al.</i> 2006. <i>Cancer Res.</i> 66:4450.
Gene ID	3902

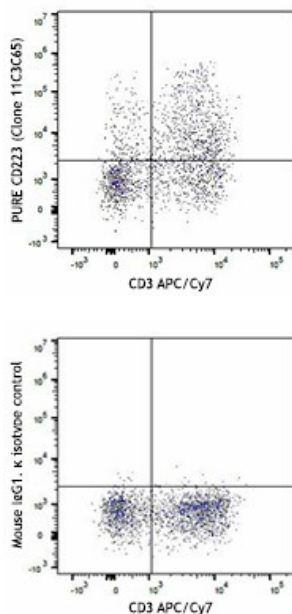
Related Protocols

[Cell Surface Flow Cytometry Staining Protocol](#)

Other Formats

Purified anti-human CD223 (LAG-3), Alexa Fluor® 647 anti-human CD223 (LAG-3), PE anti-human CD223 (LAG-3), FITC anti-human CD223 (LAG-3), PE/Cyanine7 anti-human CD223 (LAG-3), PerCP/Cyanine5.5 anti-human CD223 (LAG-3), Brilliant Violet 421™ anti-human CD223 (LAG-3), Brilliant Violet 650™ anti-human CD223 (LAG-3), Brilliant Violet 510™ anti-human CD223 (LAG-3), Brilliant Violet 785™ anti-human CD223 (LAG-3), Brilliant Violet 711™ anti-human CD223 (LAG-3), Brilliant Violet 605™ anti-human CD223 (LAG-3), Alexa Fluor® 488 anti-human CD223 (LAG-3), Biotin anti-human CD223 (LAG-3), PE/Dazzle™ 594 anti-human CD223 (LAG-3), APC/Fire™ 750 anti-human CD223 (LAG-3), TotalSeq™-A0152 anti-human CD223 (LAG-3), TotalSeq™-C0152 anti-human CD223 (LAG-3), TotalSeq™-B0152 anti-human CD223 (LAG-3), TotalSeq™-D0152 anti-human CD223 (LAG-3), Alexa Fluor® 700 anti-human CD223 (LAG-3), Pacific Blue™ anti-human CD223 (LAG-3), PE/Cyanine5 anti-human CD223 (LAG-3), APC/Cyanine7 anti-human CD223 (LAG-3), APC/Fire™ 810 anti-human CD223 (LAG-3)

Product Data



PHA-stimulated (3-day) human peripheral blood lymphocytes were stained with CD3 APC/Cy7 and purified human CD223 (LAG-3, clone 11C3C65) (top) or mouse IgG1, κ isotype control (bottom), followed by anti-mouse IgG1 PE.

For research use only. Not for diagnostic use. Not for resale. BioLegend will not be held responsible for patent infringement or other violations that may occur with the use of our products.

*These products may be covered by one or more Limited Use Label Licenses (see the BioLegend Catalog or our website, www.biolegend.com/ordering#license). BioLegend products may not be transferred to third parties, resold, modified for resale, or used to manufacture commercial products, reverse engineer functionally

similar materials, or to provide a service to third parties without written approval of BioLegend. By use of these products you accept the terms and conditions of all applicable Limited Use Label Licenses. Unless otherwise indicated, these products are for research use only and are not intended for human or animal diagnostic, therapeutic or commercial use.

BioLegend Inc., 8999 BioLegend Way, San Diego, CA 92121 www.biolegend.com
Toll-Free Phone: 1-877-Bio-Legend (246-5343) Phone: (858) 768-5800 Fax: (877) 455-9587