

Purified anti-MMP1 Antibody

Catalog# / Size	634702 / 100 µg
Clone	F15P3B6
Regulatory Status	RUO
Other Names	CLG, CLGN, Fibroblast collagenase, Interstitial collagenase, MMP-1
Isotype	Mouse IgG1, κ
Description	Matrix metalloproteinases (MMPs) are zinc-dependent endopeptidases that degrade substances within the extracellular matrix. The MMP family includes six different groups of enzymes: collagenases, gelatinases, stromelysins, transmembrane MMPs, matrilysins and others. MMPs are secreted as proenzymes that have to be cleaved in order to be activated. Other MMPs, plasmins as well as other factors activate MMPs. MMPs are thought to play an important role in tissue remodeling associated with various physiological and pathological processes. MMP1 cleaves collagens of types I, II, III, VII and X. MMP1 is thought to play an important role in rheumatoid and osteo-arthritis pathogenesis as mediators of cartilage and bone destruction. Clone F15P3B6 has been shown to be useful for western blotting and immunohistochemistry of human MMP1.

Product Details

Verified Reactivity	Human
Antibody Type	Monoclonal
Host Species	Mouse
Immunogen	Ovalbumin-conjugated synthetic peptide CSSFGFPRTVKH
Formulation	This antibody is provided in phosphate-buffered solution, pH 7.2, containing 0.09% sodium azide at 0.5 mg/ml.
Preparation	The antibody was purified by affinity chromatography.
Concentration	0.5 mg/ml
Storage & Handling	The antibody solution should be stored undiluted between 2°C and 8°C.
Application	WB - Quality tested IHC-P - Reported in the literature. not verified in house
Recommended Usage	Each lot of this antibody is quality control tested by Western blotting . Western blotting, suggested working dilution(s): Use 4 µg/ml antibody dilution buffer for each mini-gel. It is recommended that the reagent be titrated for optimal performance for each application.
Application References	1. Murray G et al. 1998. <i>Gut</i> . 43:791. 2. Murray G et al. 1998. <i>J. Pathol.</i> 185:256.
RRID	AB_2144281 (BioLegend Cat. No. 634702)

Antigen Details

Structure	Belongs to the peptidase M10A family. Contains 4 hemopexin-like domains, predicted molecular weight approximately 54 kD.
Distribution	Extracellular
Function	MMP1 cleaves collagens of types I, II, III, VII and X. MMP-1 is thought to play an important role in rheumatoid and osteo-arthritis pathogenesis as mediators of cartilage and bone destruction.

Interaction	MCP1, MCP3, MCP4, TIMP-1, MMP7, Collagen type II α 1, IBP-3, Integrin α 2, CD44, CD147, Brevican, Chymase 1, Aggrecan 1
Biology Area	Angiogenesis, Cell Adhesion, Cell Biology, Neuroinflammation, Neuroscience
Molecular Family	Enzymes and Regulators
Antigen References	1. Boire A, <i>et al.</i> 2005. <i>Cell</i> 120:303
Gene ID	4312

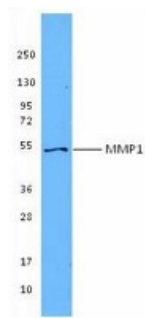
Related Protocols

[Western Blotting Protocol](#)

Other Formats

Purified anti-MMP1

Product Data



Recombinant MMP1 was resolved by electrophoresis, transferred to nitrocellulose, and probed with purified anti-MMP1 antibody (clone F15P3B6). Proteins were visualized using a goat anti-mouse IgG secondary conjugated to HRP and chemiluminescence detection.

For research use only. Not for diagnostic use. Not for resale. BioLegend will not be held responsible for patent infringement or other violations that may occur with the use of our products.

*These products may be covered by one or more Limited Use Label Licenses (see the BioLegend Catalog or our website, www.biolegend.com/ordering#license). BioLegend products may not be transferred to third parties, resold, modified for resale, or used to manufacture commercial products, reverse engineer functionally similar materials, or to provide a service to third parties without written approval of BioLegend. By use of these products you accept the terms and conditions of all applicable Limited Use Label Licenses. Unless otherwise indicated, these products are for research use only and are not intended for human or animal diagnostic, therapeutic or commercial use.

BioLegend Inc., 8999 BioLegend Way, San Diego, CA 92121 www.biolegend.com
Toll-Free Phone: 1-877-Bio-Legend (246-5343) Phone: (858) 768-5800 Fax: (877) 455-9587