

## Alexa Fluor<sup>®</sup> 488 anti-mouse Ly-6C Antibody

<b>Catalog# / Size</b>	128021 / 25 µg 128022 / 100 µg
<b>Clone</b>	HK1.4
<b>Regulatory Status</b>	RUO
<b>Other Names</b>	Lymphocyte antigen 6 complex, locus C
<b>Isotype</b>	Rat IgG2c, κ
<b>Description</b>	Most hematopoietic cells express one or more members of Ly-6 family. The expression of Ly-6 varies with development stage and activation. Ly-6C is a 14-17 kD GPI-linked surface protein expressed on mouse monocyte/macrophage cells, endothelial cells, neutrophils, and some T cell subsets. Ly-6C is reported to be an indicator of memory CD8 <sup>+</sup> T cells.

### Product Details

---

<b>Verified Reactivity</b>	Mouse
<b>Antibody Type</b>	Monoclonal
<b>Host Species</b>	Rat
<b>Immunogen</b>	L3 cloned CTL cells
<b>Formulation</b>	Phosphate-buffered solution, pH 7.2, containing 0.09% sodium azide.
<b>Preparation</b>	The antibody was purified by affinity chromatography and conjugated with Alexa Fluor <sup>®</sup> 488 under optimal conditions.
<b>Concentration</b>	0.5 mg/ml
<b>Storage &amp; Handling</b>	The antibody solution should be stored undiluted between 2°C and 8°C, and protected from prolonged exposure to light. <b>Do not freeze.</b>
<b>Application</b>	<a href="#">FC - Quality tested</a>
<b>Recommended Usage</b>	<p>Each lot of this antibody is quality control tested by <a href="#">immunofluorescent staining with flow cytometric analysis</a>. For flow cytometric staining, the suggested use of this reagent is ≤0.25 µg per million cells in 100 µl volume. It is recommended that the reagent be titrated for optimal performance for each application.</p> <p>* Alexa Fluor<sup>®</sup> 488 has a maximum emission of 519 nm when it is excited at 488 nm.</p> <p>Alexa Fluor<sup>®</sup> and Pacific Blue™ are trademarks of Life Technologies Corporation.</p> <p><a href="#">View full statement regarding label licenses</a></p>
<b>Excitation Laser</b>	Blue Laser (488 nm)
<b>Application Notes</b>	<p>Clone HK1.4 does not block the binding of clone RB6-8C5<sup>8</sup>.</p> <p>Additional reported applications (for relevant formats of this clone) include: <i>in vitro</i> activation of T cells<sup>1-3</sup> and immunohistochemistry of frozen sections<sup>4</sup>.</p>
<b>Application References</b>	<ol style="list-style-type: none"> <li>Jutila MA, <i>et al.</i> 1988. <i>Eur. J. Immunol.</i> 18:1819. (Activ)</li> <li>Herold KC, <i>et al.</i> 1990. <i>Diabetes</i> 39:815. (Activ)</li> <li>Havran WL, <i>et al.</i> 1988. <i>J. Immunol.</i> 140:1034 (Activ)</li> <li>Flanagan K, <i>et al.</i> 2008. <i>J. Immunol.</i> 180:3874. (IHC)</li> <li>Makaroff LE, <i>et al.</i> 2009. <i>P. Natl. Acad. Sci. USA</i> 106:4799. (FC)</li> <li>Zuber J, <i>et al.</i> 2009. <i>Genes Dev.</i> 23:877. (FC) <a href="#">PubMed</a></li> <li>Ribechini E, <i>et al.</i> 2009. <i>Eur. J. Immunol.</i> 39:3538.</li> <li>Ma C, <i>et al.</i> 2012. <i>J. Leukoc. Biol.</i> 92:1199.</li> <li>Watson NB, <i>et al.</i> 2015. <i>J Immunol.</i> 194:2796. <a href="#">PubMed</a></li> </ol>
<b>(PubMed link indicates BioLegend citation)</b>	

## Product Citations

1. Liu J, *et al.* 2019. *Immunity*. 50:600. [PubMed](#)
2. Baratchart E, *et al.* 2022. *PLoS Comput Biol*. 18:e1009839. [PubMed](#)
3. Karlen SJ, *et al.* 2018. *J Neuroinflammation*. 15:344. [PubMed](#)
4. Coleby R, *et al.* 2021. *Clin Exp Rheumatol*. :39. [PubMed](#)
5. Alexander J, *et al.* 2012. *Kidney Int*. 82:961. [PubMed](#)
6. Vaibhav K, *et al.* 2018. *J Exp Med*. 215:2636. [PubMed](#)
7. Zenker S, *et al.* 2014. *J Immunol*. 192:2830. [PubMed](#)
8. Lu X, *et al.* 2020. *Sci Transl Med*. 12:. [PubMed](#)
9. Guo P, *et al.* 2021. *J Immunol*. 207:408. [PubMed](#)
10. Dang MT, *et al.* 2021. *Cell Reports*. 34(13):108917. [PubMed](#)
11. Dmitrieva-Posocco O *et al.* 2019. *Immunity*. 50(1):166-180 . [PubMed](#)
12. Zhou Z, *et al.* 2022. *Life (Basel)*. 12:. [PubMed](#)
13. Kren N, *et al.* 2020. *Sci Rep*. 10:7390. [PubMed](#)
14. Lim CX, *et al.* 2020. *Cell Rep*. 3793:30. [PubMed](#)
15. Toomey CB, *et al.* 2018. *Invest Ophthalmol Vis Sci*. 59:662. [PubMed](#)
16. Toomey C, *et al.* 2015. *Proc Natl Acad Sci U S A*. 112:3040. [PubMed](#)
17. Ballet R, *et al.* 2014. *PLoS Pathog*. 10:1004550. [PubMed](#)
18. Liu Z, *et al.* 2020. *Cell*. 178(6):1509-1525.e19.. [PubMed](#)
19. Geng T, *et al.* 2021. *J Infect Dis*. 223:2186. [PubMed](#)
20. Lo CH, *et al.* 2021. *Sci Rep*. 6055:11. [PubMed](#)
21. Breznik JA, *et al.* 2021. *The Journal of Physiology*. 599(8):2169-2195. [PubMed](#)
22. Stephens WZ, *et al.* 2021. *Cell Rep*. 37:109916. [PubMed](#)
23. Pizzurro GA, *et al.* 2021. *Cancers (Basel)*. 13:. [PubMed](#)
24. Yousef H, *et al.* 2019. *Nat Med*. 25:988. [PubMed](#)
25. Breznik JA, *et al.* 2021. *Immunohorizons*. 5:370. [PubMed](#)
26. Galuppo P, *et al.* 2017. *FASEB J*. . 10.1096/fj.201700317R. [PubMed](#)
27. Skokowa J, *et al.* 2022. *Nat Commun*. 13:2948. [PubMed](#)
28. Maier N, *et al.* 2014. *J Immunol*. 192:763. [PubMed](#)
29. Fujimura N, *et al.* 2016. *Sci Rep*. 5:11664. [PubMed](#)
30. Huang WC, *et al.* 2020. *Adv Mater*. 32:e2005637. [PubMed](#)
31. Kelley WJ, *et al.* 2022. *JCI Insight*. :. [PubMed](#)
32. Smith R, *et al.* 2016. *J Leukoc Biol*. 100:371-80. [PubMed](#)
33. Silva HM, *et al.* 2019. *J Exp Med*. 216:786. [PubMed](#)
34. Winter C, *et al.* 2018. *Cell Metab*. 28:175. [PubMed](#)
35. Ishihara J, *et al.* 2018. *Nat Commun*. 9:2163. [PubMed](#)
36. Bozoglu T, *et al.* 2022. *Adv Sci (Weinh)*. 9:e2103867. [PubMed](#)
37. Ehrens A, *et al.* 2021. *Cell Reports*. 34(2):108621. [PubMed](#)
38. Liu Z, *et al.* 2020. *STAR Protoc*. 1:100029. [PubMed](#)
39. Yu YR, *et al.* 2020. *STAR Protocols*. 11(3):e0150606. [PubMed](#)
40. Tong Y, *et al.* 2018. *EBioMedicine*. 39:132. [PubMed](#)
41. Song W, *et al.* 2022. *Immunity*. 55:290. [PubMed](#)

## RRID

AB\_10640820 (BioLegend Cat. No. 128021)  
AB\_10639728 (BioLegend Cat. No. 128022)

## Antigen Details

---

<b>Structure</b>	14-17 kD protein (134 amino acids), member of the Ly-6 family of GPI linked protein. Ly6 family members share structure homology throughout a distinctive cystein rich protein domain that incorporates O-linked carbohydrates.
<b>Distribution</b>	Ly-6C is expressed primarily on bone marrow myeloid populations, monocytes/macrophages, neutrophils, endothelial cells, and some T cell subsets. Ly-6C is also a marker of memory CD8 <sup>+</sup> T cells.
<b>Cell Type</b>	Endothelial cells, Macrophages, Monocytes, Neutrophils, T cells
<b>Biology Area</b>	Immunology
<b>Molecular Family</b>	CD Molecules
<b>Antigen References</b>	1. Jutila MA, <i>et al.</i> 1988. <i>Eur. J. Immunol</i> . 18:1819. 2. Cerwenka A, <i>et al.</i> 1998. <i>J. Immunol</i> . 161:97.
<b>Gene ID</b>	<a href="#">17067</a>

## Related Protocols

---

[Cell Surface Flow Cytometry Staining Protocol](#)

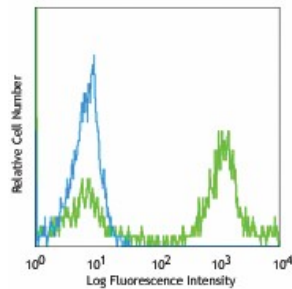
## Other Formats

---

Pacific Blue™ anti-mouse Ly-6C, APC anti-mouse Ly-6C, Purified anti-mouse Ly-6C, Biotin anti-mouse Ly-6C, FITC anti-mouse Ly-6C, Alexa Fluor® 647 anti-mouse Ly-6C, PE anti-mouse Ly-6C, PerCP/Cyanine5.5 anti-mouse Ly-6C, PE/Cyanine7 anti-mouse Ly-6C, Alexa Fluor® 488 anti-mouse Ly-6C, Alexa Fluor® 700 anti-mouse Ly-6C, APC/Cyanine7 anti-mouse Ly-6C, PerCP anti-mouse Ly-6C, Brilliant Violet 570™ anti-mouse Ly-6C, Brilliant Violet 421™ anti-mouse Ly-6C, Brilliant Violet 510™ anti-mouse Ly-6C, Brilliant Violet 605™ anti-mouse Ly-6C, Brilliant Violet 711™ anti-mouse Ly-6C, Purified anti-mouse Ly-6C (Maxpar® Ready), Brilliant Violet 785™ anti-mouse Ly-6C, PE/Dazzle™ 594 anti-mouse Ly-6C, APC/Fire™ 750 anti-mouse Ly-6C, TotalSeq™-A0013 anti-mouse Ly-6C, Brilliant Violet 650™ anti-mouse Ly-6C, TotalSeq™-C0013 anti-mouse Ly-6C, TotalSeq™-B0013 anti-mouse Ly-6C, APC/Fire™ 810 anti-mouse Ly-6C Antibody

## Product Data

---



C57BL/6 bone marrow cells stained with anti-mouse Ly-6C, HK1.4 Alexa Fluor® 488

For research use only. Not for diagnostic use. Not for resale. BioLegend will not be held responsible for patent infringement or other violations that may occur with the use of our products.

\*These products may be covered by one or more Limited Use Label Licenses (see the BioLegend Catalog or our website, [www.biolegend.com/ordering#license](http://www.biolegend.com/ordering#license)). BioLegend products may not be transferred to third parties, resold, modified for resale, or used to manufacture commercial products, reverse engineer functionally similar materials, or to provide a service to third parties without written approval of BioLegend. By use of these products you accept the terms and conditions of all applicable Limited Use Label Licenses. Unless otherwise indicated, these products are for research use only and are not intended for human or animal diagnostic, therapeutic or commercial use.

BioLegend Inc., 8999 BioLegend Way, San Diego, CA 92121 [www.biolegend.com](http://www.biolegend.com)  
Toll-Free Phone: 1-877-Bio-Legend (246-5343) Phone: (858) 768-5800 Fax: (877) 455-9587