

## Alexa Fluor® 647 anti-human FcεRIα Antibody

<b>Catalog# / Size</b>	334614 / 100 tests
<b>Clone</b>	AER-37 (CRA-1)
<b>Regulatory Status</b>	RUO
<b>Other Names</b>	FcεRIa, FcεRI-a, FcεRI-alpha, FcεRI alpha, high affinity IgE receptor
<b>Isotype</b>	Mouse IgG2b, κ
<b>Description</b>	High affinity IgE receptor (FcεRI) plays a key role in IgE-mediated allergic immune response. FcεRI is a tetrameric receptor complex, which is composed of one α-subunit (FcεRIα), one β-subunit, and two γ-subunits. FcεRIα directly binds IgE with high affinity, while the β- and γ-chains are responsible for mediating intracellular signals. FcεRIα is a 50 kD transmembrane protein with Ig superfamily structure. It is primarily found on mast cells and basophils. Further studies have indicated that FcεRIα is also expressed on many inflammatory cells including cutaneous Langerhans cells, dendritic cells, monocytes of patients with allergic disorders, platelets, bronchial epithelial cells, eosinophils produced in hypereosinophilic syndrome, and neutrophils from allergy-induced asthma patients.

### Product Details

---

<b>Verified Reactivity</b>	Human
<b>Reported Reactivity</b>	Baboon, Cynomolgus, Rhesus
<b>Antibody Type</b>	Monoclonal
<b>Host Species</b>	Mouse
<b>Formulation</b>	Phosphate-buffered solution, pH 7.2, containing 0.09% sodium azide and BSA (origin USA)
<b>Preparation</b>	The antibody was purified by affinity chromatography and conjugated with Alexa Fluor® 647 under optimal conditions.
<b>Concentration</b>	Lot-specific (to obtain lot-specific concentration, please enter the lot number in our <a href="#">Concentration and Expiration Lookup</a> or <a href="#">Certificate of Analysis</a> online tools.)
<b>Storage &amp; Handling</b>	The antibody solution should be stored undiluted between 2°C and 8°C, and protected from prolonged exposure to light. <b>Do not freeze.</b>
<b>Application</b>	<a href="#">FC - Quality tested</a>
<b>Recommended Usage</b>	Each lot of this antibody is quality control tested by <a href="#">immunofluorescent staining with flow cytometric analysis</a> . For flow cytometric staining, the suggested use of this reagent is 5 µl per million cells in 100 µl staining volume or 5 µl per 100 µl of whole blood.  * Alexa Fluor® 647 has a maximum emission of 668 nm when it is excited at 633nm / 635nm.  Alexa Fluor® and Pacific Blue™ are trademarks of Life Technologies Corporation.  <a href="#">View full statement regarding label licenses</a>
<b>Excitation Laser</b>	Red Laser (633 nm)
<b>Application Notes</b>	Clone AER-37 (CRA-1) has been reported to bind the receptor even in the presence of IgE. <sup>4</sup>
<b>Application References</b>	1. Yamaguchi M, <i>et al.</i> 1999. <i>J. Immunol.</i> 162:5455. 2. Suzukawa M, <i>et al.</i> 2005. <i>Int. Immunol.</i> 17:1249. 3. Charles N, <i>et al.</i> 2010. <i>Nat. Med.</i> 16:701. (FC) <a href="#">PubMed</a> 4. Yamaguchi M, <i>et al.</i> 1999. <i>J. Immunol.</i> 162:5455.
<b>(PubMed link indicates BioLegend citation)</b>	
<b>RRID</b>	AB_2168080 (BioLegend Cat. No. 334614)

## Antigen Details

<b>Structure</b>	Ig superfamily, 50 kD
<b>Distribution</b>	Mast cells, basophils, cutaneous Langerhans cells, dendritic cells, and monocytes from the patients with allergic disorders, platelets, bronchial epithelial cells, eosinophils from hypereosinophilic syndrome, neutrophils from allergic asthmatic patients
<b>Function</b>	Bind IgE, trigger IgE-mediated allergic response
<b>Ligand/Receptor</b>	IgE
<b>Cell Type</b>	Basophils, Dendritic cells, Eosinophils, Langerhans cells, Mast cells, Monocytes, Neutrophils
<b>Biology Area</b>	Immunology
<b>Molecular Family</b>	Fc Receptors
<b>Antigen References</b>	<ol style="list-style-type: none"><li>1. Riske F, <i>et al.</i> 1991. <i>J. Biol. Chem.</i> 266:11245</li><li>2. Gounni AS, <i>et al.</i> 2001. <i>FASEB J.</i> 15:940.</li><li>3. Maurer D, <i>et al.</i> 1996. <i>J. Immunol.</i> 157:607</li><li>4. Maurer d, <i>et al.</i> 1994. <i>J. Exp. Med.</i> 179:745</li><li>5. Campbell AM, <i>et al.</i> 1998. <i>Am. J. Respir. Cell Mol. Biol.</i> 19:92.</li></ol>
<b>Gene ID</b>	<a href="#">2205</a>

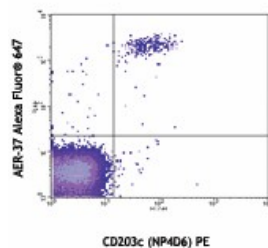
## Related Protocols

[Cell Surface Flow Cytometry Staining Protocol](#)

## Other Formats

Purified anti-human FcεR1α, Biotin anti-human FcεR1α, FITC anti-human FcεR1α, PE anti-human FcεR1α, Alexa Fluor® 647 anti-human FcεR1α, PerCP anti-human FcεR1α, APC anti-human FcεR1α, Pacific Blue™ anti-human FcεR1α, PE/Cyanine7 anti-human FcεR1α, PerCP/Cyanine5.5 anti-human FcεR1α, Brilliant Violet 421™ anti-human FcεR1α, Brilliant Violet 510™ anti-human FcεR1α, Direct-Blot™ HRP anti-human FcεR1α, Brilliant Violet 605™ anti-human FcεR1α, APC/Cyanine7 anti-human FcεR1α, Alexa Fluor® 700 anti-human FcεR1α, PE/Dazzle™ 594 anti-human FcεR1α, Brilliant Violet 711™ anti-human FcεR1α, Alexa Fluor® 488 anti-human FcεR1α, TotalSeq™-A0352 anti-human FcεR1α, TotalSeq™-C0352 anti-human FcεR1α, APC/Fire™ 750 anti-human FcεR1α, Ultra-LEAF™ Purified anti-human FcεR1α, TotalSeq™-B0352 anti-human FcεR1α, TotalSeq™-D0352 anti-human FcεR1α

## Product Data



Human peripheral blood leukocytes stained with CD203c (NP4D6) PE and AER-37 (CRA1) Alexa Fluor® 647 (gated on lymphocyte population)

For research use only. Not for diagnostic use. Not for resale. BioLegend will not be held responsible for patent infringement or other violations that may occur with the use of our products.

\*These products may be covered by one or more Limited Use Label Licenses (see the BioLegend Catalog or our website, [www.biolegend.com/ordering#license](http://www.biolegend.com/ordering#license)). BioLegend products may not be transferred to third parties, resold, modified for resale, or used to manufacture commercial products, reverse engineer functionally similar materials, or to provide a service to third parties without written approval of BioLegend. By use of these products you accept the terms and conditions of all applicable Limited Use Label Licenses. Unless otherwise indicated, these products are for research use only and are not intended for human or animal diagnostic, therapeutic or commercial use.

BioLegend Inc., 8999 BioLegend Way, San Diego, CA 92121 [www.biolegend.com](http://www.biolegend.com)  
Toll-Free Phone: 1-877-Bio-Legend (246-5343) Phone: (858) 768-5800 Fax: (877) 455-9587

