

## Alexa Fluor<sup>®</sup> 647 anti-mouse Ly-6G/Ly-6C (Gr-1) Antibody

<b>Catalog# / Size</b>	108420 / 25 µg 108418 / 100 µg
<b>Clone</b>	RB6-8C5
<b>Regulatory Status</b>	RUO
<b>Other Names</b>	Gr-1
<b>Isotype</b>	Rat IgG2b, κ
<b>Description</b>	Gr-1 is a 21-25 kD protein also known as Ly-6G/Ly-6C. This myeloid differentiation antigen is a glycosylphosphatidylinositol (GPI)-linked protein expressed on granulocytes and macrophages. In bone marrow, the expression levels of Gr-1 directly correlate with granulocyte differentiation and maturation; Gr-1 is also transiently expressed on bone marrow cells in the monocyte lineage. Immature Myeloid Gr-1+ cells play a role in the development of antitumor immunity.

### Product Details

---

<b>Verified Reactivity</b>	Mouse
<b>Antibody Type</b>	Monoclonal
<b>Host Species</b>	Rat
<b>Immunogen</b>	Raised against granulocytes of mouse origin
<b>Formulation</b>	Phosphate-buffered solution, pH 7.2, containing 0.09% sodium azide.
<b>Preparation</b>	The antibody was purified by affinity chromatography and conjugated with Alexa Fluor <sup>®</sup> 647 under optimal conditions.
<b>Concentration</b>	0.5 mg/ml
<b>Storage &amp; Handling</b>	The antibody solution should be stored undiluted between 2°C and 8°C, and protected from prolonged exposure to light. <b>Do not freeze.</b>
<b>Application</b>	<a href="#">FC - Quality tested</a>
<b>Recommended Usage</b>	<p>Each lot of this antibody is quality control tested by <a href="#">immunofluorescent staining with flow cytometric analysis</a>. For flow cytometric staining, the suggested use of this reagent is ≤ 0.25 µg per 10<sup>6</sup> cells in 100 µl volume. It is recommended that the reagent be titrated for optimal performance for each application.</p> <p>* Alexa Fluor<sup>®</sup> 647 has a maximum emission of 668 nm when it is excited at 633nm / 635nm.</p> <p>Alexa Fluor<sup>®</sup> and Pacific Blue™ are trademarks of Life Technologies Corporation.</p> <p><a href="#">View full statement regarding label licenses</a></p>
<b>Excitation Laser</b>	Red Laser (633 nm)
<b>Application Notes</b>	<p>Clone RB6-8C5 binds with high affinity to mouse Ly-6G molecules and to a lower extent to Ly-6C<sup>19</sup>. Clone RB6-8C5 impairs the binding of anti-mouse Ly-6G clone 1A8<sup>19</sup>. However, clone RB6-8C5 is able to stain in the presence of anti-mouse Ly-6C clone HK1.4<sup>20</sup>.</p> <p>The RB6-8C5 antibody has been used to identify peripheral blood neutrophils and deplete granulocytes <i>in vivo</i>. Additional reported applications (for relevant formats of this clone) include: <i>in vitro</i> complement-mediated cytotoxicity<sup>2</sup>, <i>in vivo</i> depletion<sup>3-5,9</sup>, immunoprecipitation<sup>1</sup>, immunohistochemical staining<sup>6</sup> (including paraffin-embedded sections<sup>9,16,33-35</sup>, acetone-fixed frozen sections<sup>11</sup> and zinc-fixed sections<sup>15</sup>), and Western blotting<sup>7</sup>. RB6-8C5 is not suitable for depletion of hepatic myeloid derived suppressor cells (MDSCs)<sup>20</sup>.</p> <p><b>Special Note:</b> For <i>in vivo</i> studies or highly sensitive assays, we recommend Ultra-LEAF™ purified antibody (Cat. No. 108436).</p>

## Application References

(PubMed link indicates  
BioLegend citation)

1. Fleming TJ, *et al.* 1993. *J. Immunol.* 151:2399. (IP)
2. Brummer E, *et al.* 1984. *J. Leukocyte Biol.* 36:505. (CMCD)
3. Stoppacciaro A, *et al.* 1993. *J. Exp. Med.* 178:151. (Deplete)
4. Tumpey TM, *et al.* 1996. *J. Virol.* 70:898. (Deplete)
5. Czuprynski CJ, *et al.* 1994. *J. Immunol.* 152:1836. (Deplete)
6. Nitta H, *et al.* 1997. *Cell Vision* 4:73. (IHC)
7. Jutila MA, *et al.* 1988. *Eur. J. Immunol.* 18:1819. (WB)
8. Engwerda CR, *et al.* 2004. *Am. J. Pathol.* 165:2123.
9. Brown CR, *et al.* 2004. *Infect. Immun.* 72:4956. (Deplete, IHC)
10. Andoniou CE, *et al.* 2005. *Nature Immunology* 6:1011. (FC) [PubMed](#)
11. Li M, *et al.* 2006. *P. Natl. Acad. Sci USA* 103:11736. (IHC)
12. Dzhagalov I, *et al.* 2007. *Blood* 109:1620. (FC) [PubMed](#)
13. Fazilleau N, *et al.* 2007. *Nature Immunol.* 8:753. (FC) [PubMed](#)
14. Heuser M, *et al.* 2007. *Blood* 110:1639. (FC) [PubMed](#)
15. Wang T, *et al.* 2007. *Infect. Immun.* 75:1144. (IHC)
16. Bosio CM, *et al.* 2007. *J. Immunol.* 178:4538. (IHC)
17. Boehme SA, *et al.* 2009. *Int. Immunol.* 21:81. (IHC)
18. Piao Y, *et al.* 2012. *Neuro Oncol.* 14:1379. [PubMed](#)
19. Ribechini E, *et al.* 2009. *Eur. J. Immunol.* 39:3538.
20. Ma C, *et al.* 2012. *J. Leukoc. Biol.* 92:1199.
21. Li J, *et al.* 2012. *Arthritis Rheum.* 64:1098. [PubMed](#)
22. Fan Q, *et al.* 2014. *Cancer Res.* 74:471. [PubMed](#)
23. Korner MJ, *et al.* 2014. *PLoS One.* 9:91370. [PubMed](#)
24. Morshed M, *et al.* 2014. *J Immunol.* 192:5314. [PubMed](#)
25. Collins C, *et al.* 2014. *PNAS.* 111:9899. [PubMed](#)
26. Madireddi S, *et al.* 2014. *J Exp Med.* 211:1433. [PubMed](#)
27. Bianchi G, *et al.* 2014. *Cell Death Dis.* 5:1135. [PubMed](#)
28. Guo H, *et al.* 2014. *J Leukoc Biol.* 96:419. [PubMed](#)
29. Roderick JE, *et al.* 2014. *PNAS.* 111:14436. [PubMed](#)
30. Distel E, *et al.* 2014. *Circ Res.* 115:759. [PubMed](#)
31. Iwai H, *et al.* 2015. *Tuberculosis.* 95:246. [PubMed](#)
32. Charmsaz S, *et al.* 2015. *PLoS One.* 10:130692. [PubMed](#)
33. Whiteland J, *et al.* 1994 *J Histochem Cytochem* 43:3 (IHC-P)
34. Brown C, *et al.* 2003 *J Immunology* 171:2 (IHC-P)
35. Obregon-Henao A, *et al.* PLoS One 8:11 (IHC-P)

## Product Citations

1. Tan L, *et al.* 2022. *Biochem Biophys Rep.* 32:101351. [PubMed](#)
2. Tarban N, *et al.* 2022. *Cells.* 11: . [PubMed](#)
3. Wang J, *et al.* 2012. *Blood.* 120:1489. [PubMed](#)
4. Ni J, *et al.* 2022. *Mol Med.* 28:65. [PubMed](#)
5. Demars A, *et al.* 2021. *PLoS Pathog.* 17:e1009887. [PubMed](#)
6. Shaw O, Harper J 2011. *Biochem Biophys Res Commun.* 416:266. [PubMed](#)
7. Zhang H, *et al.* 2017. *Leukemia.* 10.1128/mBio.00226-17. [PubMed](#)
8. Koliaraki V *et al.* 2019. *Cell reports.* 26(3):536-545 . [PubMed](#)
9. Bittner–Eddy PD, *et al.* 2017. *Front Immunol.* 1.304166667. [PubMed](#)
10. Chen G, *et al.* 2015. *Sci Rep.* 5: 14780. [PubMed](#)
11. Meraz I, *et al.* 2014. *PLoS One.* 9:94703. [PubMed](#)
12. Wheeler R, Gull E 2015. *Nat Commun.* 6: 8964. [PubMed](#)
13. Bouchery T, *et al.* 2020. *Cell Host & Microbe.* 27(2):277-289. [PubMed](#)
14. Biburger M, Nimmerjahn F 2012. *Immunol Lett.* 143:53. [PubMed](#)
15. Tummers B, *et al.* 2020. *Immunity.* 52(6):994-1006.e8. [PubMed](#)
16. Kim K, *et al.* 2013. *J Vis Exp.* 74: 50329. [PubMed](#)
17. Budai Z, *et al.* 2021. *Cells.* 10: . [PubMed](#)
18. Hahm E, *et al.* 2016. *Nat Med.* 23:100-106. [PubMed](#)
19. Hendrikx S *et al.* 2019. *Cell reports.* 26(5):1227-1241 . [PubMed](#)
20. Rosznagl S, *et al.* 2016. *PLoS Biol.* 14: 1002562. [PubMed](#)
21. Al-Zaeed N, *et al.* 2021. *Cell Death Dis.* 12:611. [PubMed](#)

## RRID

AB\_493481 (BioLegend Cat. No. 108420)  
AB\_389331 (BioLegend Cat. No. 108418)

## Antigen Details

---

<b>Structure</b>	21-25 kD
<b>Distribution</b>	Granulocytes, monocytes
<b>Cell Type</b>	Granulocytes, Monocytes, Neutrophils
<b>Biology Area</b>	Immunology, Innate Immunity

## Antigen References

1. Fleming TJ, *et al.* 1993. *J. Immunol.* 151:2399.
2. Jutila MA, *et al.* 1988. *Eur. J. Immunol.* 18:1819.
3. Goni O, *et al.* 2002. *Int. Immunol.* 14:1125.

Gene ID [17067](#)  
[546644](#)

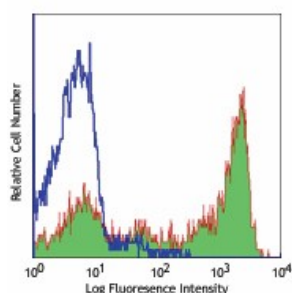
## Related Protocols

[Cell Surface Flow Cytometry Staining Protocol](#)

## Other Formats

APC anti-mouse Ly-6G/Ly-6C (Gr-1), Biotin anti-mouse Ly-6G/Ly-6C (Gr-1), FITC anti-mouse Ly-6G/Ly-6C (Gr-1), PE anti-mouse Ly-6G/Ly-6C (Gr-1), PE/Cyanine5 anti-mouse Ly-6G/Ly-6C (Gr-1), Purified anti-mouse Ly-6G/Ly-6C (Gr-1), PE/Cyanine7 anti-mouse Ly-6G/Ly-6C (Gr-1), Alexa Fluor® 488 anti-mouse Ly-6G/Ly-6C (Gr-1), Alexa Fluor® 647 anti-mouse Ly-6G/Ly-6C (Gr-1), Alexa Fluor® 700 anti-mouse Ly-6G/Ly-6C (Gr-1), Brilliant Violet 711™ anti-mouse Ly-6G/Ly-6C (Gr-1), APC/Cyanine7 anti-mouse Ly-6G/Ly-6C (Gr-1), Pacific Blue™ anti-mouse Ly-6G/Ly-6C (Gr-1), PerCP/Cyanine5.5 anti-mouse Ly-6G/Ly-6C (Gr-1), PerCP anti-mouse Ly-6G/Ly-6C (Gr-1), Brilliant Violet 421™ anti-mouse Ly-6G/Ly-6C (Gr-1), Brilliant Violet 570™ anti-mouse Ly-6G/Ly-6C (Gr-1), Ultra-LEAF™ Purified anti-mouse Ly-6G/Ly-6C (Gr-1), Brilliant Violet 510™ anti-mouse Ly-6G/Ly-6C (Gr-1), Brilliant Violet 605™ anti-mouse Ly-6G/Ly-6C (Gr-1), Brilliant Violet 650™ anti-mouse Ly-6G/Ly-6C (Gr-1), Alexa Fluor® 594 anti-mouse Ly-6G/Ly-6C (Gr-1), Purified anti-mouse Ly-6G/Ly-6C (Gr-1) (Maxpar® Ready), PE/Dazzle™ 594 anti-mouse Ly-6G/Ly-6C (Gr-1), APC/Fire™ 750 anti-mouse Ly-6G/Ly-6C (Gr-1), TotalSeq™-A0116 anti-mouse Ly-6G/Ly-6C (Gr-1), TotalSeq™-C0116 anti-mouse Ly-6G/Ly-6C (Gr-1), TotalSeq™-B0116 anti-mouse Ly-6G/Ly-6C (Gr-1), Spark Blue™ 550 anti-mouse Ly-6G/Ly-6C (Gr-1), APC/Fire™ 810 anti-mouse Ly-6G/Ly-6C (Gr-1), Spark Violet™ 423 anti-mouse Ly-6G/Ly-6C (GR-1) Antibody, Spark UV™ 387 anti-mouse Ly-6G/Ly-6C (GR-1)

## Product Data



C57BL/6 mouse bone marrow (gated on myeloid cell population) stained with Ly-6G/Ly-6C (clone RB6-8C5) Alexa Fluor® 647 (filled histogram) or rat IgG2b, κ Alexa Fluor® 647 isotype control (open histogram).

For research use only. Not for diagnostic use. Not for resale. BioLegend will not be held responsible for patent infringement or other violations that may occur with the use of our products.

\*These products may be covered by one or more Limited Use Label Licenses (see the BioLegend Catalog or our website, [www.biolegend.com/ordering#license](http://www.biolegend.com/ordering#license)). BioLegend products may not be transferred to third parties, resold, modified for resale, or used to manufacture commercial products, reverse engineer functionally similar materials, or to provide a service to third parties without written approval of BioLegend. By use of these products you accept the terms and conditions of all applicable Limited Use Label Licenses. Unless otherwise indicated, these products are for research use only and are not intended for human or animal diagnostic, therapeutic or commercial use.

BioLegend Inc., 8999 BioLegend Way, San Diego, CA 92121 [www.biolegend.com](http://www.biolegend.com)  
Toll-Free Phone: 1-877-Bio-Legend (246-5343) Phone: (858) 768-5800 Fax: (877) 455-9587