

## APC anti-human CD257 (BAFF, BLYS) Antibody

|                          |   |
|--------------------------|---|
| <b>Catalog# / Size</b>   | 366507 / 25 tests<br>366508 / 100 tests   |
| <b>Clone</b>             | 1D6   |
| <b>Regulatory Status</b> | RUO   |
| <b>Workshop</b>          | HCDM listed   |
| <b>Other Names</b>       | BAFF, BLYS, TNFSF13b, B cell activating factor, tumor necrosis factor ligand superfamily 13B, B lymphocyte stimulator (BLYS), TNF and APOL-related leukocyte expressed ligand 1 (TALL1), TNF homolog that activates apoptosis, NF-κB and JNK (THANK)  |
| <b>Isotype</b>           | Mouse IgG1, κ   |
| <b>Description</b>       | BAFF, also known as B cell activating factor, tumor necrosis factor ligand superfamily 13B, B lymphocyte stimulator (BLYS), TNF and APOL-related leukocyte expressed ligand 1 (TALL1), and TNF homolog, activates apoptosis, NF-κB, and JNK (THANK). BAFF is a type II transmembrane protein and is a member of the tumor necrosis factor ligand superfamily. BAFF can be proteolytically cleaved to form a soluble protein. BAFF, like other TNF ligand family members, forms homotrimers. The predicted molecular weight of a BAFF monomer is approximately 31 kD. BAFF is expressed on peripheral blood B and T lymphocytes, monocytes, macrophages, and dendritic cells. It is upregulated by IFN-γ and downregulated by PMA/ionomycin treatment. |

### Product Details

---

|   |  |
|---|--|
| <b>Verified Reactivity</b>                        | Human  |
| <b>Antibody Type</b>                              | Monoclonal   |
| <b>Host Species</b>                               | Mouse  |
| <b>Immunogen</b>                                  | Human CD257 transfected murine cell line.  |
| <b>Formulation</b>                                | Phosphate-buffered solution, pH 7.2, containing 0.09% sodium azide and BSA (origin USA)  |
| <b>Preparation</b>                                | The antibody was purified by affinity chromatography and conjugated with APC under optimal conditions.   |
| <b>Concentration</b>                              | Lot-specific (to obtain lot-specific concentration, please enter the lot number in our <a href="#">Concentration and Expiration Lookup</a> or <a href="#">Certificate of Analysis</a> online tools.)   |
| <b>Storage &amp; Handling</b>                     | The antibody solution should be stored undiluted between 2°C and 8°C, and protected from prolonged exposure to light. <b>Do not freeze.</b>  |
| <b>Application</b>                                | <a href="#">FC - Quality tested</a>  |
| <b>Recommended Usage</b>                          | Each lot of this antibody is quality control tested by <a href="#">immunofluorescent staining with flow cytometric analysis</a> . For flow cytometric staining, the suggested use of this reagent is 5 μl per million cells in 100 μl staining volume or 5 μl per 100 μl of whole blood. |
| <b>Excitation Laser</b>                           | Red Laser (633 nm)   |
| <b>Application References</b>                     | 1. Hase H, <i>et al.</i> 2004. <i>Blood</i> 6:2257. (IHC)  |
| <b>(PubMed link indicates BioLegend citation)</b> |  |
| <b>RRID</b>                                       | AB_2565710 (BioLegend Cat. No. 366507)<br>AB_2565711 (BioLegend Cat. No. 366508)   |

### Antigen Details

---

|                           |   |
|---------------------------|---|
| <b>Structure</b>          | Type II transmembrane protein and is a member of the tumor necrosis factor ligand superfamily. It can be proteolytically cleaved to form a soluble protein and it forms homotrimers. The predicted molecular weight of monomer is approximately 31 kD.  |
| <b>Distribution</b>       | Peripheral blood B and T lymphocytes, monocytes, macrophages, and dendritic cells. Upregulated by IFN- $\gamma$ and is downregulated by PMA/ionomycin treatment.  |
| <b>Function</b>           | Stimulates B and T cell immunity, regulates humoral immunity by binding TACI and BCMA receptors, and prevents apoptosis and promotes B cell survival by binding the BAFF-specific receptor (BAFFR/BR3).   |
| <b>Ligand/Receptor</b>    | BAFF binds to TACI (TNFRSF13B) and BCMA (TNFRSF17) as well as the APRIL ligand. BAFF also binds to the BAFF-specific receptor (BAFFR/BR3).  |
| <b>Cell Type</b>          | B cells, Dendritic cells, Macrophages, Monocytes, T cells   |
| <b>Biology Area</b>       | Cell Biology, Costimulatory Molecules, Immunology, Signal Transduction, Stem Cells  |
| <b>Molecular Family</b>   | CD Molecules, Cytokines/Chemokines, Growth Factors, Soluble Receptors   |
| <b>Antigen References</b> | <ol style="list-style-type: none"> <li>Schneider P, <i>et al.</i> 1999. <i>J. Exp. Med.</i> 189:1747.</li> <li>Moore PA, <i>et al.</i> 1999. <i>Science</i> 285:260.</li> <li>Shu HB, <i>et al.</i> 1999. <i>J. Leuko. Biol.</i> 65:680.</li> <li>Yu G, <i>et al.</i> 2000. <i>Nat. Immunol.</i> 1:252.</li> <li>Oren DA, <i>et al.</i> 2002. <i>Nat. Struct. Biol.</i> 9:288.</li> </ol> |
| <b>Gene ID</b>            | <a href="#">10673</a>   |

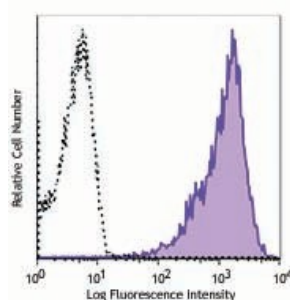
## Related Protocols

[Cell Surface Flow Cytometry Staining Protocol](#)

## Other Formats

Purified anti-human CD257 (BAFF, BLYS), Biotin anti-human CD257 (BAFF, BLYS), PE anti-human CD257 (BAFF, BLYS), APC anti-human CD257 (BAFF, BLYS), APC/Cyanine7 anti-human CD257 (BAFF, BLYS), TotalSeq™-C0863 anti-human CD257 (BAFF, BLYS)

## Product Data



Human CD257-transfected bovine coronary artery endothelial cell line (B300) was stained with anti-human CD257 (clone 1D6) APC (filled histogram) or mouse IgG1,  $\kappa$  APC isotype control (open histogram).

For research use only. Not for diagnostic use. Not for resale. BioLegend will not be held responsible for patent infringement or other violations that may occur with the use of our products.

\*These products may be covered by one or more Limited Use Label Licenses (see the BioLegend Catalog or our website, [www.biolegend.com/ordering#license](http://www.biolegend.com/ordering#license)). BioLegend products may not be transferred to third parties, resold, modified for resale, or used to manufacture commercial products, reverse engineer functionally similar materials, or to provide a service to third parties without written approval of BioLegend. By use of these products you accept the terms and conditions of all applicable Limited Use Label Licenses. Unless otherwise indicated, these products are for research use only and are not intended for human or animal diagnostic, therapeutic or commercial use.

BioLegend Inc., 8999 BioLegend Way, San Diego, CA 92121 [www.biolegend.com](http://www.biolegend.com)  
Toll-Free Phone: 1-877-Bio-Legend (246-5343) Phone: (858) 768-5800 Fax: (877) 455-9587

