

## APC anti-mouse lymphotoxin beta receptor (LT $\beta$ R) Antibody

<b>Catalog# / Size</b>	134407 / 25 $\mu$ g 134408 / 100 $\mu$ g
<b>Clone</b>	5G11
<b>Regulatory Status</b>	RUO
<b>Other Names</b>	LT $\beta$ R, TNFRIII, TNF receptor-related protein (TNFRp)
<b>Isotype</b>	Rat IgG2a, $\kappa$
<b>Description</b>	LT $\beta$ R is a type I transmembrane glycoprotein and member of the TNF receptor superfamily. It is a 61 KDa receptor for the mouse LT $\alpha$ 1 $\beta$ 2 and LIGHT. Northern blot analysis of tissues from adult mice showed that expression levels of LT $\beta$ R mRNA were strong in lung, liver, and kidney, moderate in heart and testes, but weak in brain, thymus, spleen, and lymph nodes. It was reported that LT $\beta$ R is expressed on stromal cells, monocytes, and certain embryonic epithelial layers. LT $\beta$ R is involved in peripheral lymphoid tissue organogenesis and function. The LT $\alpha$ /LT $\beta$ R receptor system may also have some function in early embryogenesis.

### Product Details

---

<b>Verified Reactivity</b>	Mouse
<b>Antibody Type</b>	Monoclonal
<b>Host Species</b>	Rat
<b>Immunogen</b>	<i>E. coli</i> expressed extracellular domain of mouse lymphotoxin beta receptor
<b>Formulation</b>	Phosphate-buffered solution, pH 7.2, containing 0.09% sodium azide.
<b>Preparation</b>	The antibody was purified by affinity chromatography and conjugated with APC under optimal conditions.
<b>Concentration</b>	0.2 mg/ml
<b>Storage &amp; Handling</b>	The antibody solution should be stored undiluted between 2°C and 8°C, and protected from prolonged exposure to light. <b>Do not freeze.</b>
<b>Application</b>	<a href="#">FC - Quality tested</a>
<b>Recommended Usage</b>	Each lot of this antibody is quality control tested by <a href="#">immunofluorescent staining with flow cytometric analysis</a> . For flow cytometric staining, the suggested use of this reagent is $\leq$ 0.25 $\mu$ g per million cells in 100 $\mu$ l volume. It is recommended that the reagent be titrated for optimal performance for each application.
<b>Excitation Laser</b>	Red Laser (633 nm)
<b>Product Citations</b>	1. Krausgruber T, <i>et al.</i> 2020. Nature. 583:296. <a href="#">PubMed</a> 2. Rodriguez AB, <i>et al.</i> 2021. Cell Reports. 36(3):109422. <a href="#">PubMed</a>
<b>RRID</b>	AB_2728150 (BioLegend Cat. No. 134407) AB_2728151 (BioLegend Cat. No. 134408)

### Antigen Details

---

<b>Distribution</b>	Expressed on stromal cells, monocytes, and certain embryonic epithelial layers.
<b>Function</b>	LT $\beta$ R is involved in peripheral lymphoid tissue organogenesis and function. The LT $\alpha$ /LT $\beta$ R receptor system may also have some function in early embryogenesis.
<b>Ligand/Receptor</b>	LT $\alpha$ 1 $\beta$ 2 and LIGHT

<b>Cell Type</b>	Embryonic Stem Cells, Epithelial cells, Monocytes
<b>Biology Area</b>	Immunology, Stem Cells
<b>Molecular Family</b>	Adhesion Molecules, Cytokine/Chemokine Receptors
<b>Antigen References</b>	<ol style="list-style-type: none"> <li>1. Force WR, <i>et al.</i> 1995. <i>J. Immunol.</i> 155:5280</li> <li>2. Tamada K, <i>et al.</i> 2000. <i>J. Immunol.</i> 164:4105</li> <li>3. Browning JL, <i>et al.</i> 1997. <i>J. Immunol.</i> 159:3288</li> <li>4. Futterer A, <i>et al.</i> 1998. <i>Immunity</i> 9:59</li> <li>5. Nakamura T, <i>et al.</i> 1995. <i>Genomics</i> 30:312</li> <li>6. Crowe P, <i>et al.</i> 1996. <i>Science</i> 264:707</li> <li>7. Dejardin E, <i>et al.</i> <i>Immunity</i> 2002. 17(4):525</li> </ol>
<b>Gene ID</b>	<a href="#">17000</a>

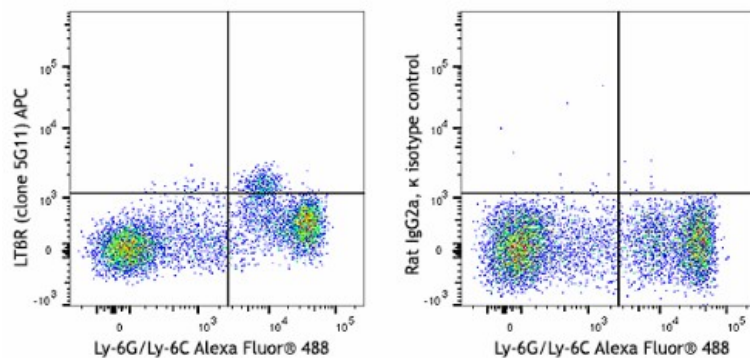
## Related Protocols

[Cell Surface Flow Cytometry Staining Protocol](#)

## Other Formats

Purified anti-mouse lymphotoxin beta receptor (LTβR), PE anti-mouse lymphotoxin beta receptor (LTβR), PE/Cyanine7 anti-mouse lymphotoxin beta receptor (LTβR), APC anti-mouse lymphotoxin beta receptor (LTβR)

## Product Data



C57BL/6 bone marrow cells were stained with Alexa Fluor® 488 Ly-6G/Ly-6C and APC anti-mouse lymphotoxin beta receptor (left) or APC Rat IgG2a, κ isotype control (right).

For research use only. Not for diagnostic use. Not for resale. BioLegend will not be held responsible for patent infringement or other violations that may occur with the use of our products.

\*These products may be covered by one or more Limited Use Label Licenses (see the BioLegend Catalog or our website, [www.biolegend.com/ordering#license](http://www.biolegend.com/ordering#license)). BioLegend products may not be transferred to third parties, resold, modified for resale, or used to manufacture commercial products, reverse engineer functionally similar materials, or to provide a service to third parties without written approval of BioLegend. By use of these products you accept the terms and conditions of all applicable Limited Use Label Licenses. Unless otherwise indicated, these products are for research use only and are not intended for human or animal diagnostic, therapeutic or commercial use.

BioLegend Inc., 8999 BioLegend Way, San Diego, CA 92121 [www.biolegend.com](http://www.biolegend.com)  
 Toll-Free Phone: 1-877-Bio-Legend (246-5343) Phone: (858) 768-5800 Fax: (877) 455-9587