

Biotin anti-human CD15 (SSEA-1) Antibody

Catalog# / Size	301913 / 25 µg 301914 / 100 µg
Clone	HI98
Regulatory Status	RUO
Workshop	IV M141
Other Names	Lewis X, 3-FAL, 3-FL, LNFP III, Lex , SSEA-1, X-hapten
Isotype	Mouse IgM, κ
Description	CD15 is 3-fucosyl-N-acetylactosamine (3-FAL), also known as Lewis X, 3-FAL, X-hapten, and SSEA-1. CD15 is expressed on granulocytes and monocytes. It has also been shown to be expressed on Langerhans cells and some malignant cells. CD15 has been implicated in adhesion, as well as chemotaxis, phagocytosis, and bactericidal activity.

Product Details

Verified Reactivity	Human
Reported Reactivity	Chimpanzee
Antibody Type	Monoclonal
Host Species	Mouse
Formulation	Phosphate-buffered solution, pH 7.2, containing 0.09% sodium azide.
Preparation	The antibody was purified by affinity chromatography and conjugated with biotin under optimal conditions.
Concentration	0.5 mg/ml
Storage & Handling	The antibody solution should be stored undiluted between 2°C and 8°C. Do not freeze.
Application	FC - Quality tested
Recommended Usage	Each lot of this antibody is quality control tested by immunofluorescent staining with flow cytometric analysis . For flow cytometric staining, the suggested use of this reagent is ≤ 0.06 µg per million cells in 100 µl volume. It is recommended that the reagent be titrated for optimal performance for each application.
Application Notes	Clone HI98 has been described to specifically react with 3-fucosyl-N-acetylactosamine (3-FAL), also called X-hapten, SSEA-1, CD15, or Lewis X. Additional reported applications (for the relevant formats) include: immunohistochemical staining of acetone-fixed frozen sections ⁵ and formalin-fixed paraffin-embedded tissue sections.
Application References	<ol style="list-style-type: none">1. Knapp W, <i>et al.</i> Eds. 1989. Leucocyte Typing IV. Oxford University Press. New York.2. Schlossman S, <i>et al.</i> Eds. 1995. Leucocyte Typing V. Oxford University Press. New York.3. McMichael A, <i>et al.</i> 1987. Leucocyte Typing III. Oxford University Press. New York.4. Yoshino N, <i>et al.</i> 2000. <i>Exp. Anim. (Tokyo)</i> 49:97. (FC)5. van Baarsen LG, <i>et al.</i> 2014. <i>Arthritis Res. Ther.</i> 16:426. (IHC)
(PubMed link indicates BioLegend citation)	
Product Citations	<ol style="list-style-type: none">1. Swanson E, <i>et al.</i> 2021. eLife. 10:00. PubMed
RRID	AB_2561325 (BioLegend Cat. No. 301913) AB_2561326 (BioLegend Cat. No. 301914)

Antigen Details

Structure	Poly-N-acetyllactosamine
Distribution	Neutrophils, eosinophils, monocytes
Function	Adhesion
Cell Type	Embryonic Stem Cells, Eosinophils, Monocytes, Neural Stem Cells, Neutrophils
Biology Area	Cell Biology, Immunology, Innate Immunity, Neuroscience, Neuroscience Cell Markers, Stem Cells
Molecular Family	Adhesion Molecules, CD Molecules
Antigen References	1. Stocks SC, <i>et al.</i> 1990. <i>Biochem. J.</i> 268:275.
Gene ID	2526

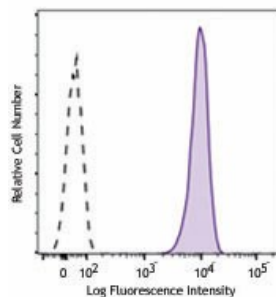
Related Protocols

[Cell Surface Flow Cytometry Staining Protocol](#)

Other Formats

APC anti-human CD15 (SSEA-1), FITC anti-human CD15 (SSEA-1), PE anti-human CD15 (SSEA-1), Purified anti-human CD15 (SSEA-1), Alexa Fluor® 488 anti-human CD15 (SSEA-1), Alexa Fluor® 594 anti-human CD15 (SSEA-1), Biotin anti-human CD15 (SSEA-1), Alexa Fluor® 700 anti-human CD15 (SSEA-1), PE/Cyanine7 anti-human CD15 (SSEA-1), PerCP/Cyanine5.5 anti-human CD15 (SSEA-1), Spark Violet™ 423 anti-human CD15 (SSEA-1), Spark Violet™ 538 anti-human CD15 (SSEA-1)

Product Data



Human peripheral blood granulocytes were stained with biotinylated CD15 (clone HI98, filled histogram) or mouse IgM, κ (open histogram) isotype control, followed by SAV-PE.

For research use only. Not for diagnostic use. Not for resale. BioLegend will not be held responsible for patent infringement or other violations that may occur with the use of our products.

*These products may be covered by one or more Limited Use Label Licenses (see the BioLegend Catalog or our website, www.biolegend.com/ordering#license). BioLegend products may not be transferred to third parties, resold, modified for resale, or used to manufacture commercial products, reverse engineer functionally similar materials, or to provide a service to third parties without written approval of BioLegend. By use of these products you accept the terms and conditions of all applicable Limited Use Label Licenses. Unless otherwise indicated, these products are for research use only and are not intended for human or animal diagnostic, therapeutic or commercial use.

BioLegend Inc., 8999 BioLegend Way, San Diego, CA 92121 www.biolegend.com
Toll-Free Phone: 1-877-Bio-Legend (246-5343) Phone: (858) 768-5800 Fax: (877) 455-9587