

Direct-Blot™ HRP anti-human FcεRIα Antibody

Catalog# / Size	334635 / 100 μL
Clone	AER-37 (CRA-1)
Regulatory Status	RUO
Other Names	FcεRIa, FcεRI-a, FcεRI-alpha, FcεRI alpha, high affinity IgE receptor
Isotype	Mouse IgG2b, κ

Description High affinity IgE receptor (FcεRI) plays a key role in IgE-mediated allergic immune response. FcεRI is a tetrameric receptor complex, which is composed of one α-subunit (FcεRIα), one β-subunit, and two γ-subunits. FcεRIα directly binds IgE with high affinity, while the β- and γ-chains are responsible for mediating intracellular signals. FcεRIα is a 50 kD transmembrane protein with Ig superfamily structure. It is primarily found on mast cells and basophils. Further studies have indicated that FcεRIα is also expressed on many inflammatory cells including cutaneous Langerhans cells, dendritic cells, monocytes of patients with allergic disorders, platelets, bronchial epithelial cells, eosinophils produced in hypereosinophilic syndrome, and neutrophils from allergy-induced asthma patients.

Product Details

Verified Reactivity	Human
Reported Reactivity	Baboon, Cynomolgus, Rhesus
Antibody Type	Monoclonal
Host Species	Mouse
Formulation	This antibody is provided in 50% glycerol in aqueous buffered solutions with preservatives.
Preparation	The antibody was purified by affinity chromatography and conjugated with HRP under optimal conditions.
Concentration	Lot-specific (to obtain lot-specific concentration, please enter the lot number in our Concentration and Expiration Lookup or Certificate of Analysis online tools.)
Storage & Handling	Upon receipt, the antibody solution should be stored undiluted at -20°C, and protected from prolonged exposure to light.
Application	WB - Quality tested
Recommended Usage	Each lot of this antibody is quality control tested by Western blotting . For Western blotting, the suggested dilution is 1:1000-1:4000. The optimal dilution should be determined by titration for each individual assay of interest. 25 μl and 100 μl of Direct-Blot™ HRP antibody can be used for approximately 5 and 20 Western blots, respectively, at the recommended concentration/dilution.
Application Notes	Clone AER-37 (CRA-1) has been reported to bind the receptor even in the presence of IgE. ⁴
Application References	1. Yamaguchi M, <i>et al.</i> 1999. <i>J. Immunol.</i> 162:5455. 2. Suzukawa M, <i>et al.</i> 2005. <i>Int. Immunol.</i> 17:1249. 3. Charles N, <i>et al.</i> 2010. <i>Nat. Med.</i> 16:701. (FC) PubMed 4. Yamaguchi M, <i>et al.</i> 1999. <i>J. Immunol.</i> 162:5455.
(PubMed link indicates BioLegend citation)	
RRID	AB_2629556 (BioLegend Cat. No. 334635)

Antigen Details

Structure	Ig superfamily, 50 kD
Distribution	Mast cells, basophils, cutaneous Langerhans cells, dendritic cells, and monocytes from the patients with allergic disorders, platelets, bronchial epithelial cells, eosinophils from hypereosinophilic syndrome, neutrophils from allergic asthmatic patients
Function	Bind IgE, trigger IgE-mediated allergic response
Ligand/Receptor	IgE
Cell Type	Basophils, Dendritic cells, Eosinophils, Langerhans cells, Mast cells, Monocytes, Neutrophils
Biology Area	Immunology
Molecular Family	Fc Receptors
Antigen References	<ol style="list-style-type: none"> 1. Riske F, <i>et al.</i> 1991. <i>J. Biol. Chem.</i> 266:11245 2. Gounni AS, <i>et al.</i> 2001. <i>FASEB J.</i> 15:940. 3. Maurer D, <i>et al.</i> 1996. <i>J. Immunol.</i> 157:607 4. Maurer d, <i>et al.</i> 1994. <i>J. Exp. Med.</i> 179:745 5. Campbell AM, <i>et al.</i> 1998. <i>Am. J. Respir. Cell Mol. Biol.</i> 19:92.
Gene ID	2205

Related Protocols

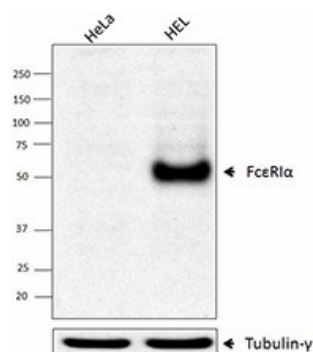
[Direct-Blot™ HRP Antibodies Save You Time - Video](#)

[Direct-Blot™ Western Blotting Protocol](#)

Other Formats

Purified anti-human FcεR1α, Biotin anti-human FcεR1α, FITC anti-human FcεR1α, PE anti-human FcεR1α, Alexa Fluor® 647 anti-human FcεR1α, PerCP anti-human FcεR1α, APC anti-human FcεR1α, Pacific Blue™ anti-human FcεR1α, PE/Cyanine7 anti-human FcεR1α, PerCP/Cyanine5.5 anti-human FcεR1α, Brilliant Violet 421™ anti-human FcεR1α, Brilliant Violet 510™ anti-human FcεR1α, Direct-Blot™ HRP anti-human FcεR1α, Brilliant Violet 605™ anti-human FcεR1α, APC/Cyanine7 anti-human FcεR1α, Alexa Fluor® 700 anti-human FcεR1α, PE/Dazzle™ 594 anti-human FcεR1α, Brilliant Violet 711™ anti-human FcεR1α, Alexa Fluor® 488 anti-human FcεR1α, TotalSeq™-A0352 anti-human FcεR1α, TotalSeq™-C0352 anti-human FcεR1α, APC/Fire™ 750 anti-human FcεR1α, Ultra-LEAF™ Purified anti-human FcεR1α, TotalSeq™-B0352 anti-human FcεR1α, TotalSeq™-D0352 anti-human FcεR1α

Product Data



Total cell lysates (15 µg protein) from HeLa and HEL were resolved by 4-12% Bis-Tris gel electrophoresis, transferred to nitrocellulose, and probed with purified HRP anti-human FcεR1α Antibody (clone AER-37). Proteins were visualized with chemiluminescence detection. Tubulin-γ antibody was used as a loading control.

For research use only. Not for diagnostic use. Not for resale. BioLegend will not be held responsible for patent infringement or other violations that may occur with the use of our products.

*These products may be covered by one or more Limited Use Label Licenses (see the BioLegend Catalog or our website, www.biolegend.com/ordering#license). BioLegend products may not be transferred to third parties, resold, modified for resale, or used to manufacture commercial products, reverse engineer functionally similar materials, or to provide a service to third parties without written approval of BioLegend. By use of these products you accept the terms and conditions of all applicable Limited Use Label Licenses. Unless otherwise indicated, these products are for research use only and are not intended for human or animal diagnostic, therapeutic or commercial use.

Toll-Free Phone: 1-877-Bio-Legend (246-5343) Phone: (858) 768-5800 Fax: (877) 455-9587