

FITC anti-human CD15 (SSEA-1) Antibody

Catalog# / Size	394705 / 25 tests 394706 / 100 tests
Clone	MMA
Regulatory Status	RUO
Other Names	FUT4, ELFT, FCT3A, FUC-TIV, FUTIV, LeX, SSEA-1, 3-FAL, 3-FL, LNFP III, X-hapten
Isotype	Mouse IgM, κ
Description	CD15 is 3-fucosyl-N-acetylglucosamine (3-FAL), also known as Lewis X, 3-FAL, X-hapten, and SSEA-1. CD15 is expressed on granulocytes and monocytes. It has also been shown to be expressed on Langerhans cells and some malignant cells. CD15 has been implicated in adhesion, as well as chemotaxis, phagocytosis, and bactericidal activity.

Product Details

Verified Reactivity	Human
Antibody Type	Monoclonal
Host Species	Mouse
Immunogen	U-937 human cell line
Formulation	Phosphate-buffered solution, pH 7.2, containing 0.09% sodium azide and BSA (origin USA)
Preparation	The antibody was purified by affinity chromatography and conjugated with FITC under optimal conditions.
Concentration	Lot-specific (to obtain lot-specific concentration, please enter the lot number in our Concentration and Expiration Lookup or Certificate of Analysis online tools.)
Storage & Handling	The antibody solution should be stored undiluted between 2°C and 8°C, and protected from prolonged exposure to light. Do not freeze.
Application	FC - Quality tested
Recommended Usage	Each lot of this antibody is quality control tested by immunofluorescent staining with flow cytometric analysis . For flow cytometric staining, the suggested use of this reagent is 5 µl per million cells in 100 µl staining volume or 5 µl per 100 µl of whole blood.
Application Notes	In-house testing suggests that clone MMA does not block W6D3 also raised against human CD15 (SSEA-1)
Application References (PubMed link indicates BioLegend citation)	<ol style="list-style-type: none"> Hanjan S.N, <i>et al.</i> 1982. <i>Clin. Immunol. and Immunopathol.</i> 23(2):172 (FC) Greil R, <i>et al.</i> 2018. <i>Oncotarget.</i> 9(29):20928 (IHC) Brcic L, <i>et al.</i> 2018. <i>Virchows. Arch.</i> 472(4):589 (IHC/FC) Karai B, <i>et al.</i> 2018. <i>Biochem. Med.</i> 28(2):020704 (FC) Chan RC, <i>et al.</i> 2018. <i>Biomed Rep.</i> 8(3):224 (FC)
Product Citations	<ol style="list-style-type: none"> Sutton HJ, <i>et al.</i> 2021. <i>Cell Reports.</i> 34(6):108684. PubMed
RRID	AB_2750481 (BioLegend Cat. No. 394705) AB_2750482 (BioLegend Cat. No. 394706)

Antigen Details

Structure	Poly-N-acetylglucosamine
------------------	--------------------------

Distribution	Neutrophils, eosinophils, monocytes
Function	Phagocytosis and chemotaxis
Ligand/Receptor	CD62E
Cell Type	Neutrophils, Eosinophils
Biology Area	Cell Biology, Immunology, Neuroscience, Neuroscience Cell Markers
Molecular Family	CD Molecules
Antigen References	1. Stocks SC, <i>et al.</i> 1990. <i>Biochem. J.</i> 268:275.
Gene ID	2526

Related Protocols

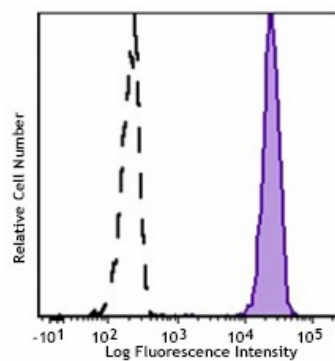
[Surface and Intracellular Cytokine Staining for Flow Cytometry - Video](#)

[Intracellular Flow Cytometry Staining Protocol](#)

Other Formats

Purified anti-human CD15 (SSEA-1), Pacific Blue™ anti-human CD15 (SSEA-1), FITC anti-human CD15 (SSEA-1)

Product Data



Human peripheral blood granulocytes were stained with FITC CD15 (SSEA-1, clone MMA) (filled histogram) or FITC Mouse IgM, κ isotype control (open histogram).

For research use only. Not for diagnostic use. Not for resale. BioLegend will not be held responsible for patent infringement or other violations that may occur with the use of our products.

*These products may be covered by one or more Limited Use Label Licenses (see the BioLegend Catalog or our website, www.biolegend.com/ordering#license). BioLegend products may not be transferred to third parties, resold, modified for resale, or used to manufacture commercial products, reverse engineer functionally similar materials, or to provide a service to third parties without written approval of BioLegend. By use of these products you accept the terms and conditions of all applicable Limited Use Label Licenses. Unless otherwise indicated, these products are for research use only and are not intended for human or animal diagnostic, therapeutic or commercial use.

BioLegend Inc., 8999 BioLegend Way, San Diego, CA 92121 www.biolegend.com
Toll-Free Phone: 1-877-Bio-Legend (246-5343) Phone: (858) 768-5800 Fax: (877) 455-9587