

## FITC anti-human CD150 (SLAM) Antibody

<b>Catalog# / Size</b>	306306 / 100 tests
<b>Clone</b>	A12 (7D4)
<b>Regulatory Status</b>	RUO
<b>Other Names</b>	SLAM, Signaling Lymphocyte Activation Molecule, IPO-3
<b>Isotype</b>	Mouse IgG1, $\kappa$
<b>Description</b>	CD150 is a 70-95 kD type I transmembrane glycoprotein also known as SLAM or IPO-3. It is a member of the Ig superfamily. It is expressed on a subset of T cells, B cells, dendritic cells, and endothelial cells. The expression of CD150 is upregulated upon activation. CD150 binds to itself as the ligand to be involved in B cell costimulation, proliferation, immunoglobulin production, and signal transduction.

### Product Details

---

<b>Verified Reactivity</b>	Human, Cynomolgus, Rhesus
<b>Reported Reactivity</b>	African Green, Baboon
<b>Antibody Type</b>	Monoclonal
<b>Host Species</b>	Mouse
<b>Immunogen</b>	Activated human PBMC
<b>Formulation</b>	Phosphate-buffered solution, pH 7.2, containing 0.09% sodium azide and BSA (origin USA)
<b>Preparation</b>	The antibody was purified by affinity chromatography, and conjugated with FITC under optimal conditions.
<b>Storage &amp; Handling</b>	The antibody solution should be stored undiluted between 2°C and 8°C, and protected from prolonged exposure to light. <b>Do not freeze.</b>
<b>Application</b>	<a href="#">FC - Quality tested</a>
<b>Recommended Usage</b>	Each lot of this antibody is quality control tested by <a href="#">immunofluorescent staining with flow cytometric analysis</a> . For flow cytometric staining, the suggested use of this reagent is 5 $\mu$ l per million cells in 100 $\mu$ l staining volume or 5 $\mu$ l per 100 $\mu$ l of whole blood.
<b>Application Notes</b>	Additional reported applications (for the relevant formats) include: immunohistochemical staining of acetone-fixed frozen tissue sections, immunoprecipitation <sup>4</sup> , and costimulation <sup>1,5</sup> of IFN-gamma production and T cell proliferation. The Ultra-LEAF™ purified antibody (Endotoxin <0.01 EU/ $\mu$ g, Azide-Free, 0.2 $\mu$ m filtered) is recommended for functional assays (Cat. No. 306317 and 306318).
<b>Application References</b>	<ol style="list-style-type: none"><li>1. Garcia V, <i>et al.</i> 2001. <i>J. Immunol.</i> 167:5719. (Costim)</li><li>2. Vincent S, <i>et al.</i> 2002. <i>J. Virol.</i> 76:6121.</li><li>3. Cocks B, <i>et al.</i> 1995. <i>Nature</i> 376:260.</li><li>4. Sayos J, <i>et al.</i> 2001. <i>Blood</i> 97:3867. (IP)</li><li>5. Aversa G, <i>et al.</i> 1997. <i>J. Immunol.</i> 158:4036. (Costim)</li><li>6. Spencer M, <i>et al.</i> 2010. <i>Am. J. Physiol Endocrinol Metab.</i> 299:1016. <a href="#">PubMed</a></li></ol>
<b>(PubMed link indicates BioLegend citation)</b>	
<b>Product Citations</b>	<ol style="list-style-type: none"><li>1. Di Blasi D, <i>et al.</i> 2019. <i>Cell Mol Gastroenterol Hepatol.</i> 0.510416667. <a href="#">PubMed</a></li><li>2. Yoon H, <i>et al.</i> 2020. <i>PLoS One.</i> 15:e0238791. <a href="#">PubMed</a></li><li>3. Rodriguez A, <i>et al.</i> 2021. <i>Cell Stem Cell.</i> 28:33. <a href="#">PubMed</a></li></ol>
<b>RRID</b>	AB_314594 (BioLegend Cat. No. 306306)

### Antigen Details

<b>Structure</b>	Ig superfamily, type I transmembrane glycoprotein, 70-95 kD
<b>Distribution</b>	T subset (upregulated after activation), B cells, dendritic cells, endothelial cells
<b>Function</b>	B cell costimulation, proliferation and Ig production
<b>Ligand/Receptor</b>	CD150 (self ligand)
<b>Cell Type</b>	B cells, Dendritic cells, Endothelial cells, T cells, Tregs
<b>Biology Area</b>	Costimulatory Molecules, Immunology, Innate Immunity
<b>Molecular Family</b>	Adhesion Molecules, CD Molecules
<b>Antigen References</b>	<ol style="list-style-type: none"> <li>1. Cocks B, <i>et al.</i> 1995. <i>Nature</i> 376:260.</li> <li>2. Pinchouk V, <i>et al.</i> 1988. <i>AntiCancer Res.</i> 8:1377.</li> <li>3. Polacino P, <i>et al.</i> 1996. <i>J. Med. Primatol.</i> 25:201.</li> <li>4. Punnonen J, <i>et al.</i> 1997. <i>J. Exp. Med.</i> 185:993.</li> </ol>
<b>Gene ID</b>	<a href="#">6504</a>

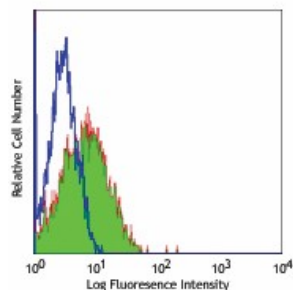
## Related Protocols

[Cell Surface Flow Cytometry Staining Protocol](#)

## Other Formats

FITC anti-human CD150 (SLAM), PE anti-human CD150 (SLAM), Purified anti-human CD150 (SLAM), Alexa Fluor® 488 anti-human CD150 (SLAM), TotalSeq™-A0870 anti-human CD150 (SLAM), TotalSeq™-C0870 anti-human CD150 (SLAM), Ultra-LEAF™ Purified anti-human CD150 (SLAM), TotalSeq™-B0870 anti-human CD150 (SLAM) Antibody

## Product Data



Human peripheral blood lymphocytes stained with A12 FITC

For research use only. Not for diagnostic use. Not for resale. BioLegend will not be held responsible for patent infringement or other violations that may occur with the use of our products.

\*These products may be covered by one or more Limited Use Label Licenses (see the BioLegend Catalog or our website, [www.biolegend.com/ordering#license](http://www.biolegend.com/ordering#license)). BioLegend products may not be transferred to third parties, resold, modified for resale, or used to manufacture commercial products, reverse engineer functionally similar materials, or to provide a service to third parties without written approval of BioLegend. By use of these products you accept the terms and conditions of all applicable Limited Use Label Licenses. Unless otherwise indicated, these products are for research use only and are not intended for human or animal diagnostic, therapeutic or commercial use.

BioLegend Inc., 8999 BioLegend Way, San Diego, CA 92121 [www.biolegend.com](http://www.biolegend.com)  
Toll-Free Phone: 1-877-Bio-Legend (246-5343) Phone: (858) 768-5800 Fax: (877) 455-9587