

FITC anti-human CD68 Antibody

Catalog# / Size	333805 / 25 tests 333806 / 100 tests
Clone	Y1/82A
Regulatory Status	RUO
Workshop	VI MR23
Other Names	Macrosialin
Isotype	Mouse IgG2b, κ
Description	CD68 is a 110 kD glycoprotein, also known as macrosialin, belonging to the sialomucin family. It is closely related to the family of acidic, highly glycosylated lysosomal-associated membrane proteins (LAMPs). CD68 is predominately expressed in cytoplasmic granules of monocytes/macrophages, dendritic cells, and granulocytes. It is one of the useful myeloid cell markers. Further studies have shown that CD68 is also expressed by a subset of hematopoietic progenitors, γδ T cells, NK cells, LAK cells, subset of B cells, fibroblasts, and endothelial cells. The biological function of CD68 is still unknown.

Product Details

Verified Reactivity	Human
Antibody Type	Monoclonal
Host Species	Mouse
Formulation	Phosphate-buffered solution, pH 7.2, containing 0.09% sodium azide and BSA (origin USA)
Preparation	The antibody was purified by affinity chromatography, and conjugated with FITC under optimal conditions.
Concentration	Lot-specific (to obtain lot-specific concentration, please enter the lot number in our Concentration and Expiration Lookup or Certificate of Analysis online tools.)
Storage & Handling	The antibody solution should be stored undiluted between 2°C and 8°C, and protected from prolonged exposure to light. Do not freeze.
Application	ICFC - Quality tested
Recommended Usage	Each lot of this antibody is quality control tested by intracellular immunofluorescent staining with flow cytometric analysis . For flow cytometric staining, the suggested use of this reagent is 5 µl per million cells in 100 µl staining volume or 5 µl per 100 µl of whole blood.
Excitation Laser	Blue Laser (488 nm)
Application Notes	Additional reported application: immunohistochemical staining of frozen tissue sections. This clone was tested in-house and does not work on formalin fixed paraffin-embedded (FFPE) tissue.
Application References	<ol style="list-style-type: none"> 1. Doussis IA, <i>et al.</i> 1993. <i>J. Clin. Pathol.</i> 46:334. 2. Davey FR, <i>et al.</i> 1988. <i>J. Clin. Pathol.</i> 41:753. 3. Bushway ME, <i>et al.</i> 2014. <i>Biol Reprod.</i> 90(5): 110. (IF) PubMed
(PubMed link indicates BioLegend citation)	
Product Citations	<ol style="list-style-type: none"> 1. Gao R, <i>et al.</i> 2021. <i>iScience.</i> 24:103133. PubMed 2. Rao G, <i>et al.</i> 2013. <i>Clin Cancer Res.</i> 19:785. PubMed 3. Li Y, <i>et al.</i> 2021. <i>Nat Commun.</i> 12:87. PubMed 4. Chauhan A, <i>et al.</i> 2020. <i>Nat Commun.</i> 11:1939. PubMed 5. Wang HC, <i>et al.</i> 2022. <i>J Biomed Sci.</i> 29:99. PubMed 6. Zhang S, <i>et al.</i> 2020. <i>Front Immunol.</i> 1.757638889. PubMed 7. Malekghasemi S, <i>et al.</i> 2020. <i>Cell Biol Int.</i> 44:2031. PubMed 8. Huang Y, <i>et al.</i> 2022. <i>Front Immunol.</i> 13:993788. PubMed 9. Gautam S, <i>et al.</i> 2016. <i>J Biol Chem.</i> 291: 14356 - 14362. PubMed

10. Nakano H, *et al.* 2018. *Arthritis Res Ther.* 20:124. [PubMed](#)
11. Xu P, *et al.* 2020. *Cancer Immunol Res.* 8:1193. [PubMed](#)
12. Lv J, *et al.* 2021. *Mol Med Rep.* 1. [PubMed](#)
13. Fujisaka Y, *et al.* 2018. *Oncol Lett.* 15:509. [PubMed](#)
14. Serhan J 2012. *Blood.* 120:e60. [PubMed](#)
15. Zhang X, *et al.* 2021. *Nat Commun.* 12:4536. [PubMed](#)
16. Zhang B, *et al.* 2020. *Cell Death Dis.* 0.973611111. [PubMed](#)
17. Ishii N, *et al.* 2014. *J Immunol.* 193:5118. [PubMed](#)
18. Wu L, *et al.* 2020. *Cancer Immunol Res.* 710:8. [PubMed](#)
19. Wang R, *et al.* 2019. *EBioMedicine.* 40:118. [PubMed](#)

RRID AB_1089055 (BioLegend Cat. No. 333805)
 AB_1089054 (BioLegend Cat. No. 333806)

Antigen Details

Structure	Sialomucin family, 110 kD
Distribution	Monocytes/macrophages, dendritic cells, granulocytes, subset of hematopoietic progenitors, γ/δ T cells, NK cells, LAK cells, subset of B cells, fibroblasts, endothelial cells
Cell Type	B cells, Dendritic cells, Endothelial cells, Fibroblasts, Granulocytes, Hematopoietic stem and progenitors, Macrophages, Monocytes, T cells
Biology Area	Cell Biology, Immunology, Neuroscience, Neuroscience Cell Markers
Molecular Family	CD Molecules
Antigen References	<ol style="list-style-type: none"> 1. Holness CL and Simmons DL. 1993. <i>Blood</i> 81:1607. 2. Gottfried E, <i>et al.</i> 2008. <i>Scand. J. Immunol.</i> 67:453. 3. Hameed A, <i>et al.</i> 1994. <i>Hum. Pathol.</i> 25:872.
Gene ID	968

Related Protocols

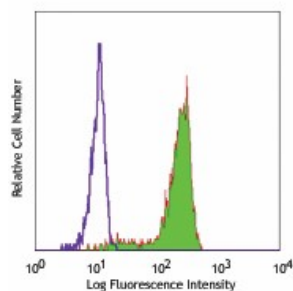
[Surface and Intracellular Cytokine Staining for Flow Cytometry - Video](#)

[Intracellular Flow Cytometry Staining Protocol](#)

Other Formats

PerCP/Cyanine5.5 anti-human CD68, Purified anti-human CD68, Biotin anti-human CD68, FITC anti-human CD68, PE anti-human CD68, APC anti-human CD68, Alexa Fluor® 488 anti-human CD68, PE/Cyanine7 anti-human CD68, Alexa Fluor® 647 anti-human CD68, APC/Cyanine7 anti-human CD68, APC/Fire™ 750 anti-human CD68, Brilliant Violet 785™ anti-human CD68, Brilliant Violet 421™ anti-human CD68, TotalSeq™-B0234 anti-human CD68

Product Data



Human peripheral blood monocytes intracellularly stained with Y1/82A FITC

For research use only. Not for diagnostic use. Not for resale. BioLegend will not be held responsible for patent infringement or other violations that may occur with the use of our products.

*These products may be covered by one or more Limited Use Label Licenses (see the BioLegend Catalog or our website, www.biolegend.com/ordering#license). BioLegend products may not be transferred to third parties, resold, modified for resale, or used to manufacture commercial products, reverse engineer functionally similar materials, or to provide a service to third parties without written approval of BioLegend. By use of these products you accept the terms and conditions of all applicable Limited Use Label Licenses. Unless otherwise indicated, these products are for research use only and are not intended for human or animal diagnostic, therapeutic or commercial use.

BioLegend Inc., 8999 BioLegend Way, San Diego, CA 92121 www.biolegend.com
Toll-Free Phone: 1-877-Bio-Legend (246-5343) Phone: (858) 768-5800 Fax: (877) 455-9587