

PE anti-human CD257 (BAFF, BLYS) Antibody

Catalog# / Size	366505 / 25 tests 366506 / 100 tests
Clone	1D6
Regulatory Status	RUO
Workshop	HCDM listed
Other Names	BAFF, BLYS, TNFSF13b, B cell activating factor, tumor necrosis factor ligand superfamily 13B, B lymphocyte stimulator (BLYS), TNF and APOL-related leukocyte expressed ligand 1 (TALL1), TNF homolog that activates apoptosis, NF-κB and JNK (THANK)
Isotype	Mouse IgG1, κ
Description	BAFF, also known as B cell activating factor, tumor necrosis factor ligand superfamily 13B, B lymphocyte stimulator (BLYS), TNF and APOL-related leukocyte expressed ligand 1 (TALL1), and TNF homolog, activates apoptosis, NF-κB, and JNK (THANK). BAFF is a type II transmembrane protein and is a member of the tumor necrosis factor ligand superfamily. BAFF can be proteolytically cleaved to form a soluble protein. BAFF, like other TNF ligand family members, forms homotrimers. The predicted molecular weight of a BAFF monomer is approximately 31 kD. BAFF is expressed on peripheral blood B and T lymphocytes, monocytes, macrophages, and dendritic cells. It is upregulated by IFN-γ and downregulated by PMA/ionomycin treatment.

Product Details

Verified Reactivity	Human
Antibody Type	Monoclonal
Host Species	Mouse
Immunogen	Human CD257 transfected murine cell line.
Formulation	Phosphate-buffered solution, pH 7.2, containing 0.09% sodium azide and BSA (origin USA)
Preparation	The antibody was purified by affinity chromatography and conjugated with PE under optimal conditions.
Concentration	Lot-specific (to obtain lot-specific concentration, please enter the lot number in our Concentration and Expiration Lookup or Certificate of Analysis online tools.)
Storage & Handling	The antibody solution should be stored undiluted between 2°C and 8°C, and protected from prolonged exposure to light. Do not freeze.
Application	FC - Quality tested
Recommended Usage	Each lot of this antibody is quality control tested by immunofluorescent staining with flow cytometric analysis . For flow cytometric staining, the suggested use of this reagent is 5 µl per million cells in 100 µl staining volume or 5 µl per 100 µl of whole blood.
Excitation Laser	Blue Laser (488 nm) Green Laser (532 nm)/Yellow-Green Laser (561 nm)
Application References (PubMed link indicates BioLegend citation)	1. Hase H, <i>et al.</i> 2004. <i>Blood</i> 6:2257. (IHC)
RRID	AB_2565708 (BioLegend Cat. No. 366505) AB_2565709 (BioLegend Cat. No. 366506)

Antigen Details

Structure	Type II transmembrane protein and is a member of the tumor necrosis factor ligand superfamily. It can be proteolytically cleaved to form a soluble protein and it forms homotrimers. The predicted molecular weight of monomer is approximately 31 kD.
Distribution	Peripheral blood B and T lymphocytes, monocytes, macrophages, and dendritic cells. Upregulated by IFN- γ and is downregulated by PMA/ionomycin treatment.
Function	Stimulates B and T cell immunity, regulates humoral immunity by binding TACI and BCMA receptors, and prevents apoptosis and promotes B cell survival by binding the BAFF-specific receptor (BAFFR/BR3).
Ligand/Receptor	BAFF binds to TACI (TNFRSF13B) and BCMA (TNFRSF17) as well as the APRIL ligand. BAFF also binds to the BAFF-specific receptor (BAFFR/BR3).
Cell Type	B cells, Dendritic cells, Macrophages, Monocytes, T cells
Biology Area	Cell Biology, Costimulatory Molecules, Immunology, Signal Transduction, Stem Cells
Molecular Family	CD Molecules, Cytokines/Chemokines, Growth Factors, Soluble Receptors
Antigen References	<ol style="list-style-type: none">1. Schneider P, <i>et al.</i> 1999. <i>J. Exp. Med.</i> 189:1747.2. Moore PA, <i>et al.</i> 1999. <i>Science</i> 285:260.3. Shu HB, <i>et al.</i> 1999. <i>J. Leuko. Biol.</i> 65:680.4. Yu G, <i>et al.</i> 2000. <i>Nat. Immunol.</i> 1:252.5. Oren DA, <i>et al.</i> 2002. <i>Nat. Struct. Biol.</i> 9:288.
Gene ID	10673

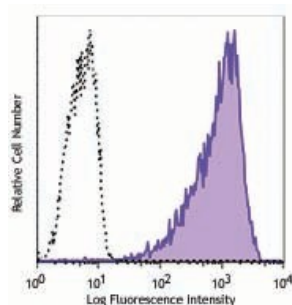
Related Protocols

[Cell Surface Flow Cytometry Staining Protocol](#)

Other Formats

Purified anti-human CD257 (BAFF, BLYS), Biotin anti-human CD257 (BAFF, BLYS), PE anti-human CD257 (BAFF, BLYS), APC anti-human CD257 (BAFF, BLYS), APC/Cyanine7 anti-human CD257 (BAFF, BLYS), TotalSeq™-C0863 anti-human CD257 (BAFF, BLYS)

Product Data



Human CD257-transfected bovine coronary artery endothelial cell line (B300) was stained with anti-human CD257 (clone 1D6) PE (filled histogram) or mouse IgG1, κ PE isotype control (open histogram).

For research use only. Not for diagnostic use. Not for resale. BioLegend will not be held responsible for patent infringement or other violations that may occur with the use of our products.

*These products may be covered by one or more Limited Use Label Licenses (see the BioLegend Catalog or our website, www.biolegend.com/ordering#license). BioLegend products may not be transferred to third parties, resold, modified for resale, or used to manufacture commercial products, reverse engineer functionally similar materials, or to provide a service to third parties without written approval of BioLegend. By use of these products you accept the terms and conditions of all applicable Limited Use Label Licenses. Unless otherwise indicated, these products are for research use only and are not intended for human or animal diagnostic, therapeutic or commercial use.

BioLegend Inc., 8999 BioLegend Way, San Diego, CA 92121 www.biolegend.com
Toll-Free Phone: 1-877-Bio-Legend (246-5343) Phone: (858) 768-5800 Fax: (877) 455-9587

