

Prime-Step™ Prestained Broad Range Protein Ladder

Catalog# / Size	773301 / 50 µL 773302 / 500 µL
Regulatory Status	RUO
Other Names	protein ladder, protein marker, pre-stained protein ladder, pre-stained protein marker, protein molecular weight marker
Description	The Prime-Step™ Prestained Broad Range Protein Ladder is a three-color protein standard with 10 pre-stained proteins covering a wide range of molecular weights from 6.5 to 270 kDa. It has 7 blue-stained bands and 3 reference bands (2 orange bands at 30 kDa and 270 kDa and 1 green band at 52 kDa) when separated on Tris-glycine gel. The Prime-Step™ Prestained Broad Range Protein Ladder is designed for monitoring protein separation during SDS-PAGE electrophoresis, confirming Western blot transfer quality on membranes (PVDF or nitrocellulose membrane) and for approximating the size of target proteins on the gel or blot.

Key Product Features

Clear separation and sharp bands in different SDS-PAGE gel and buffer systems
Excellent transfer efficiency on PVDF and Nitrocellulose membrane for WB
Suitable for size detection during protein purification
Comparable MW detection with competitor's protein ladders
Better performance for high molecular weight proteins
Supplied in the sample loading buffer and is ready to use

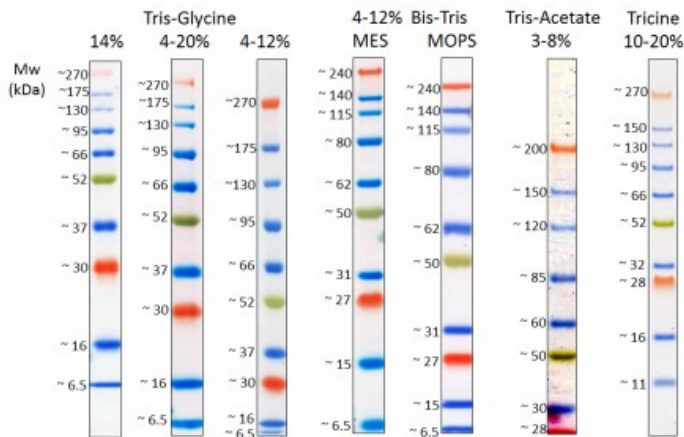
Product Details

Formulation	Sample loading buffer (62.5 mM Tris-H ₃ PO ₄ (pH 7.5 at 25°C), 1 mM EDTA, 2% SDS, 10 mM DTT, 1 mM NaN ₃ , 33% glycerol).
Preparation	Chromophore conjugated recombinant protein mixture supplied in sample loading buffer.
Storage & Handling	Upon receipt, store at -20°C.
Application	WB - Quality tested
Recommended Usage	<ul style="list-style-type: none">• 3-5 µl per loading for clear visualization during electrophoresis on 15-well mini-gel or 20-well midi-gel, respectively.• 3-5 µl per well for general Western transferring. <p>The ladder is supplied in the sample loading buffer and is ready to use.</p>
Application Notes	The apparent molecular weight (kDa) of each protein has been determined by calibration against unstained protein standards.

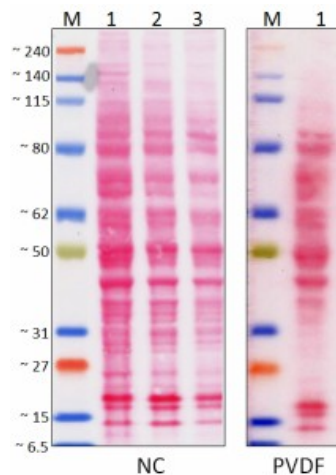
Antigen Details

Biology Area	Cell Biology
Gene ID	NA

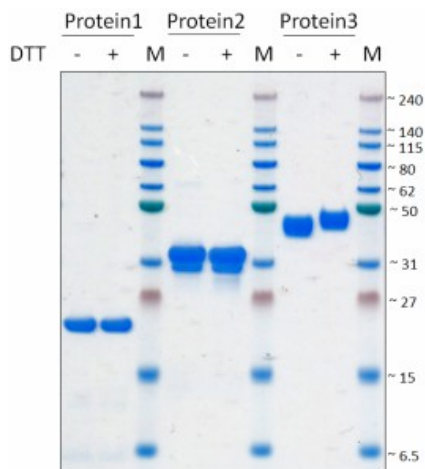
Product Data



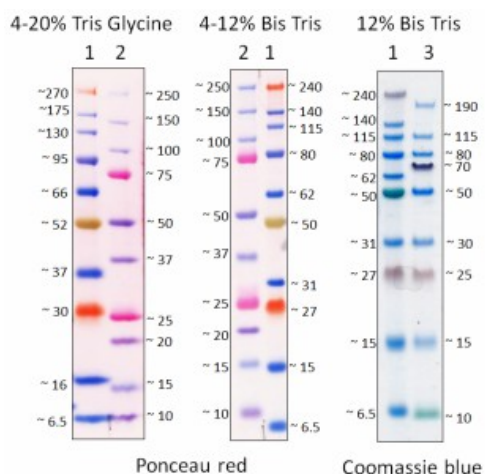
3µl Prime-Step™ Prestained Broad Range Protein Ladder was resolved by electrophoresis in different gel running systems, including 14%, 4-20% and 4-12% Tris-Glycine gel, 4-12% Bis-Tris gel (MOPS and MES running buffer), 3-8% Tris-Acetate gel and 10-20% Tricine gel. Then protein ladders were transferred to nitrocellulose membrane. Mw: molecular weight.



3µl Prime-Step™ Prestained Broad Range Protein Ladder (lane M) and total cell lysates (15µg total protein) was resolved by electrophoresis in 4-12% Bis-Tris gel (MOPS running buffer). Then protein ladders and total cell lysates were transferred to nitrocellulose (NC) and PVDF membrane followed by Ponceau red staining. Lane 1: HeLa; Lane 2: Jurkat; Lane 3: NIH3T3 cells.



3µl Prime-Step™ Prestained Broad Range Protein Ladder (lane M) and 2µg recombinant proteins 1, 2, 3, with different molecular weights, was resolved by electrophoresis in 12% Bis-Tris gel (MES running buffer) followed by Coomassie blue staining.



3µl Prime-Step™ Prestained Broad Range Protein Ladder was resolved by electrophoresis in different gel running systems: 4-20% Tris-Glycine gel, 4-12% Bis-Tris gel (MES running buffer). Proteins were either stained with Coomassie blue, or transferred to nitrocellulose membrane followed by Ponceau red staining. Lane 1: Prime-Step™ Prestained Broad Range Protein Ladder; Lane 2: Competitor 1 protein ladder; Lane 3: Competitor 2 protein ladder.

For research use only. Not for diagnostic use. Not for resale. BioLegend will not be held responsible for patent infringement or other violations that may occur with the use of our products.

*These products may be covered by one or more Limited Use Label Licenses (see the BioLegend Catalog or our website, www.biolegend.com/ordering#license). BioLegend products may not be transferred to third parties, resold, modified for resale, or used to manufacture commercial products, reverse engineer functionally similar materials, or to provide a service to third parties without written approval of BioLegend. By use of these products you accept the terms and conditions of all applicable Limited Use Label Licenses. Unless otherwise indicated, these products are for research use only and are not intended for human or animal diagnostic, therapeutic or commercial use.

BioLegend Inc., 8999 BioLegend Way, San Diego, CA 92121 www.biolegend.com
Toll-Free Phone: 1-877-Bio-Legend (246-5343) Phone: (858) 768-5800 Fax: (877) 455-9587