

Purified anti-human CD15 (SSEA-1) (Maxpar® Ready) Antibody

Catalog# / Size	323035 / 100 µg
Clone	W6D3
Regulatory Status	RUO
Workshop	HCDM listed
Other Names	Lewis X, 3-FAL, 3-FL, LNFP III, Lex, SSEA-1, X-hapten
Isotype	Mouse IgG1, κ
Description	CD15 is 3-fucosyl-N-acetyllactosamine (3-FAL) also known as Lewis X, 3-FAL, X-hapten, and SSEA-1. CD15 is expressed on granulocytes and monocytes. It has also been shown to be expressed on Langerhans cells. CD15 has been implicated in adhesion as well as chemotaxis, phagocytosis, and bactericidal activity.

Product Details

Verified Reactivity	Human
Antibody Type	Monoclonal
Host Species	Mouse
Immunogen	WERI-RB-1 retinoblastoma cell line
Formulation	Phosphate-buffered solution, pH 7.2, containing 0.09% sodium azide and EDTA.
Preparation	The antibody was purified by affinity chromatography.
Concentration	1.0 mg/ml
Storage & Handling	The antibody solution should be stored undiluted between 2°C and 8°C.
Application	FC - Quality tested CyTOF® - Verified
Recommended Usage	This product is suitable for use with the Maxpar® Metal Labeling Kits . For metal labeling using Maxpar® Ready antibodies, proceed directly to the step to Partially Reduce the Antibody by adding 100 µl of Maxpar® Ready antibody to 100 µl of 4 mM TCEP-R in a 50 kDa filter and continue with the protocol. Always refer to the latest version of Maxpar® User Guide when conjugating Maxpar® Ready antibodies.
Additional Product Notes	Maxpar® is a registered trademark of Standard BioTools Inc.
RRID	AB_2562831 (BioLegend Cat. No. 323035)

Antigen Details

Structure	Poly-N-acetyllactosamine
Distribution	Neutrophils, eosinophils, monocytes
Function	Adhesion
Cell Type	Embryonic Stem Cells, Eosinophils, Neutrophils
Biology Area	Cell Biology, Immunology, Neuroscience, Neuroscience Cell Markers, Stem Cells
Molecular Family	CD Molecules
Antigen References	1. Stocks SC, <i>et al.</i> 1990. <i>Biochem. J.</i> 268:275.

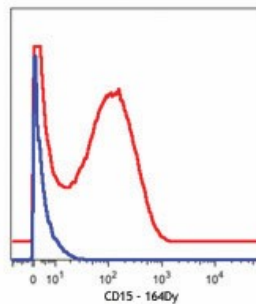
Related Protocols

[Cell Surface Flow Cytometry Staining Protocol](#)

Other Formats

Brilliant Violet 785™ anti-human CD15 (SSEA-1), Purified anti-human CD15 (SSEA-1), FITC anti-human CD15 (SSEA-1), PE anti-human CD15 (SSEA-1), APC anti-human CD15 (SSEA-1), Alexa Fluor® 488 anti-human CD15 (SSEA-1), Alexa Fluor® 647 anti-human CD15 (SSEA-1), PE/Cyanine5 anti-human CD15 (SSEA-1), PerCP anti-human CD15 (SSEA-1), PerCP/Cyanine5.5 anti-human CD15 (SSEA-1), Pacific Blue™ anti-human CD15 (SSEA-1), Alexa Fluor® 700 anti-human CD15 (SSEA-1), Brilliant Violet 510™ anti-human CD15 (SSEA-1), PE/Cyanine7 anti-human CD15 (SSEA-1), Brilliant Violet 605™ anti-human CD15 (SSEA-1), Brilliant Violet 650™ anti-human CD15 (SSEA-1), Purified anti-human CD15 (SSEA-1) (Maxpar® Ready), PE/Dazzle™ 594 anti-human CD15 (SSEA-1), Brilliant Violet 421™ anti-human CD15 (SSEA-1), APC/Fire™ 750 anti-human CD15 (SSEA-1), TotalSeq™-A0392 anti-human CD15 (SSEA-1), Brilliant Violet 711™ anti-human CD15 (SSEA-1), APC/Cyanine7 anti-human CD15 (SSEA-1), TotalSeq™-B0392 anti-human CD15 (SSEA-1), TotalSeq™-C0392 anti-human CD15 (SSEA-1), APC/Fire™ 810 anti-human CD15 (SSEA-1) Antibody, TotalSeq™-D0392 anti-human CD15 (SSEA-1), GMP FITC anti-human CD15 (SSEA-1), Spark YG™ 593 anti-human CD15 (SSEA-1), GMP PE anti-human CD15 (SSEA-1), GMP Pacific Blue™ anti-human CD15 (SSEA-1)

Product Data



Human PBMCs (blue) and RBC-lysed human whole blood cells (red) stained with 164Dy-anti-CD15 (W6D3). Data provided by DVS Sciences.

For research use only. Not for diagnostic use. Not for resale. BioLegend will not be held responsible for patent infringement or other violations that may occur with the use of our products.

*These products may be covered by one or more Limited Use Label Licenses (see the BioLegend Catalog or our website, www.biolegend.com/ordering#license). BioLegend products may not be transferred to third parties, resold, modified for resale, or used to manufacture commercial products, reverse engineer functionally similar materials, or to provide a service to third parties without written approval of BioLegend. By use of these products you accept the terms and conditions of all applicable Limited Use Label Licenses. Unless otherwise indicated, these products are for research use only and are not intended for human or animal diagnostic, therapeutic or commercial use.

BioLegend Inc., 8999 BioLegend Way, San Diego, CA 92121 www.biolegend.com
Toll-Free Phone: 1-877-Bio-Legend (246-5343) Phone: (858) 768-5800 Fax: (877) 455-9587