

Purified anti-human Ig light chain λ Antibody

Catalog# / Size	374602 / 100 μ g
Clone	1-155-2
Regulatory Status	RUO
Other Names	Ig
Isotype	Mouse IgG1, κ
Description	The 1-155-2 antibody reacts with both soluble and membrane human immunoglobulin light chain lambda (λ). It does not react with human immunoglobulin light chain kappa (κ) or heavy chains

Product Details

Verified Reactivity	Human
Antibody Type	Monoclonal
Host Species	Mouse
Immunogen	human IgA ₁ - λ myeloma protein
Formulation	Phosphate-buffered solution, pH 7.2, containing 0.09% sodium azide.
Preparation	The antibody was purified by affinity chromatography.
Concentration	0.5 mg/ml
Storage & Handling	The antibody solution should be stored undiluted between 2°C and 8°C.
Application	FC - Quality tested
Recommended Usage	Each lot of this antibody is quality control tested by immunofluorescent staining with flow cytometric analysis . For flow cytometric staining, the suggested use of this reagent is \leq 0.5 μ g per million cells in 100 μ l volume. It is recommended that the reagent be titrated for optimal performance for each application.
RRID	AB_2721351 (BioLegend Cat. No. 374602)

Antigen Details

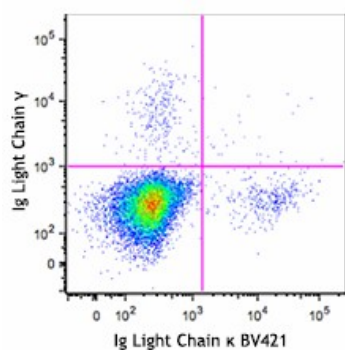
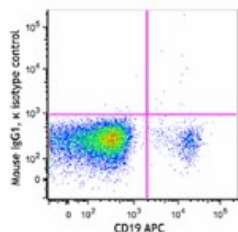
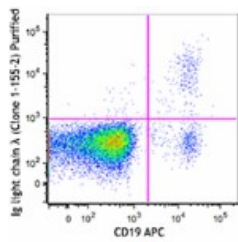
Distribution	Subset of B cells
Cell Type	B cells
Gene ID	3535

Related Protocols

[Cell Surface Flow Cytometry Staining Protocol](#)

Other Formats

Product Data



Overnight cultured human peripheral blood lymphocytes were stained with purified anti-human Ig Light Chain λ (clone, 1-155-2) (upper panel) or purified mIgG1, κ isotype control (bottom) followed by anti-mouse IgG FITC then stained with CD19 APC.

Overnight cultured human peripheral blood lymphocytes were stained with purified anti-human Ig Light Chain λ (clone 1-155-2) followed by anti-mouse IgG FITC and then Brilliant Violet™ 421 anti-human kappa (clone MHK-49).

For research use only. Not for diagnostic use. Not for resale. BioLegend will not be held responsible for patent infringement or other violations that may occur with the use of our products.

*These products may be covered by one or more Limited Use Label Licenses (see the BioLegend Catalog or our website, www.biolegend.com/ordering#license). BioLegend products may not be transferred to third parties, resold, modified for resale, or used to manufacture commercial products, reverse engineer functionally similar materials, or to provide a service to third parties without written approval of BioLegend. By use of these products you accept the terms and conditions of all applicable Limited Use Label Licenses. Unless otherwise indicated, these products are for research use only and are not intended for human or animal diagnostic, therapeutic or commercial use.

BioLegend Inc., 8999 BioLegend Way, San Diego, CA 92121 www.biolegend.com
Toll-Free Phone: 1-877-Bio-Legend (246-5343) Phone: (858) 768-5800 Fax: (877) 455-9587