

Purified anti-human MIF Antibody

Catalog# / Size	525501 / 50 µg 525502 / 500 µg
Clone	10C3
Regulatory Status	RUO
Other Names	Macrophage migration inhibitory factor (MMIF), Glycosylation inhibiting factor (GIF), GLIF
Isotype	Mouse IgG2b, κ
Description	<p>Human macrophage migration inhibitory factor (MIF) is a 12.5 kD, 115 amino acid, non-glycosylated polypeptide expressed by multiple cell types, including activated T cells, macrophages, eosinophils, epithelial cells, and endothelial cells. MIF plays many roles in biological processes such as catalytic activity, immunity, endocrine regulation, signal modulation, and inflammation.</p> <p>MIF is expressed in malignant cells including lung, liver, breast, colon, and prostate tumors. Studies suggest that MIF might serve as a molecular link between chronic inflammation and cancer.</p> <p>Recombinant MIF consists of a mixture of monomers, dimers, and trimers. The physiologically active forms are believed to be predominantly dimeric and trimeric forms.</p>

Product Details

Verified Reactivity	Human
Antibody Type	Monoclonal
Host Species	Mouse
Immunogen	Recombinant human MIF with a His tag
Formulation	Phosphate-buffered solution, pH 7.2, containing 0.09% sodium azide.
Preparation	The antibody was purified by affinity chromatography.
Concentration	0.5 mg/ml
Storage & Handling	The antibody solution should be stored undiluted between 2°C and 8°C.
Application	ELISA Capture - Quality tested WB - Verified
Recommended Usage	Each lot of this protein is quality control tested by ELISA assay . A concentration of 4 µg/ml of the capture antibody was utilized to generate the example standard curve. It is recommended that each lot of reagent be titrated for optimal performance for each application.
Application Notes	<p>ELISA: To measure human MIF, the purified 10C3 antibody (Cat. No. 525501) is useful as the capture antibody in a sandwich ELISA assay, when used in conjunction with the biotinylated 10C3 antibody (Cat. No. 525503) as the detection antibody.</p> <p>Additional reported applications (for the relevant formats) include: functional assay¹ and neutralization¹. The LEAF™ purified antibody (Endotoxin <0.1 EU/µg, Azide-Free, 0.2 µm filtered) is recommended for functional assays (contact our custom solutions team).</p> <p>Note: For testing human MIF in serum, plasma or cell culture supernatant, BioLegend's LEGEND MAX™ ELISA Kits (Cat. No. 438407 & 438408) are specially developed and recommended.</p>
Application References	1. Zhou H, <i>et al.</i> 2009. <i>PLoS ONE</i> . 4:e6087. (FA, Neut)
(PubMed link indicates BioLegend citation)	
RRID	AB_2563133 (BioLegend Cat. No. 525501)

Antigen Details

Structure	Predominantly a homotrimer
Distribution	Activated T-cells, macrophages, eosinophils, epithelial cells, and endothelial cells
Function	Pro-inflammatory cytokine, regulates macrophage function, involved in cancer development, tautomerase activity
Interaction	Monocytes and macrophages, mesenchymal cells, B-cells
Ligand/Receptor	CD74, CXCR4, CXCR2, CXCR7
Cell Type	Endothelial cells, Eosinophils, Epithelial cells, Macrophages, T cells
Biology Area	Angiogenesis, Apoptosis/Tumor Suppressors/Cell Death, Cell Biology, Cell Cycle/DNA Replication, Immunology, Innate Immunity, Signal Transduction
Molecular Family	Cytokines/Chemokines
Antigen References	<ol style="list-style-type: none">1. Zhou H, <i>et al.</i> 2009. <i>PLoS ONE</i>. 4:e6087.2. Potolicchio I, <i>et al.</i> 2003. <i>J. Biol. Chem.</i> 278:30889.3. Meyer-Siegler K & Iczkowski K. 2005. <i>BMC Cancer</i>. 5:73.4. Babu SN, <i>et al.</i> 2012. <i>Asian Pac. J. Cancer Prev.</i> 13:1737.
Gene ID	4282

Related Protocols

[Active Protocols: Sandwich ELISA - Video](#)

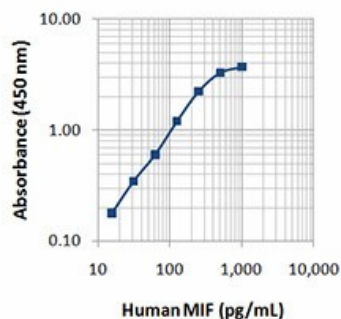
[Western Blotting Protocol](#)

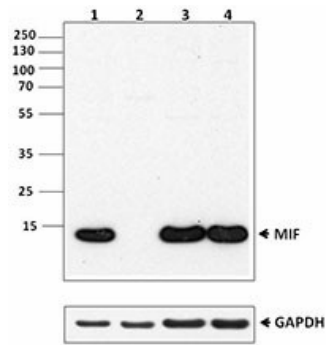
[Sandwich ELISA Protocol](#)

Other Formats

Purified anti-human MIF, Biotin anti-human MIF

Product Data





Western blot analysis of THP-1 (lane 1), Raw264.7 (lane 2), PC-3 (lane 3) and Jurkat (lane 4) cells using anti-MIF antibody (10C3). GAPDH antibody (poly6314) was used as loading control.

For research use only. Not for diagnostic use. Not for resale. BioLegend will not be held responsible for patent infringement or other violations that may occur with the use of our products.

*These products may be covered by one or more Limited Use Label Licenses (see the BioLegend Catalog or our website, www.biolegend.com/ordering#license). BioLegend products may not be transferred to third parties, resold, modified for resale, or used to manufacture commercial products, reverse engineer functionally similar materials, or to provide a service to third parties without written approval of BioLegend. By use of these products you accept the terms and conditions of all applicable Limited Use Label Licenses. Unless otherwise indicated, these products are for research use only and are not intended for human or animal diagnostic, therapeutic or commercial use.

BioLegend Inc., 8999 BioLegend Way, San Diego, CA 92121 www.biolegend.com
Toll-Free Phone: 1-877-Bio-Legend (246-5343) Phone: (858) 768-5800 Fax: (877) 455-9587