

Purified anti-mouse/human CD15 (SSEA-1) Antibody

Catalog# / Size	125602 / 100 µg
Clone	MC-480
Regulatory Status	RUO
Other Names	Stage-Specific Embryonic Antigen 1, X-hapten, Lewis X, 3-FAL, CD15, SSEA1, SSEA-1
Isotype	Mouse IgM, κ
Description	The MC-480 antibody reacts with mouse and human Stage-Specific Embryonic Antigen-1 (SSEA-1). It is a Lewis blood group related carbohydrate antigen, also known as X-hapten, Lewis X, 3-FAL, 3-fucosyl-N-acetyllactosamine, or CD15. The expression pattern of SSEA-1 antigen is different in humans than in mice. In mice, SSEA-1 is expressed on embryonic stem cells (ES), embryonal carcinoma cells (EC), 8-cell to blastocyst embryos, and a subset of embryonic inner cell mass. The expression on murine ES cells is decreased upon differentiation. In humans, however, SSEA-1 is not found on undifferentiated ES cells, but its expression is upregulated along with differentiation. CD15 is highly expressed on adult human granulocytes. It has been reported that SSEA-1 plays a role in cell adhesion and regulation of cell differentiation.

Product Details

Verified Reactivity	Human, Mouse
Antibody Type	Monoclonal
Host Species	Mouse
Immunogen	Mouse F9 Teratocarcinoma Stem Cells (X-irradiated)
Formulation	Phosphate-buffered solution, pH 7.2, containing 0.09% sodium azide.
Preparation	The antibody was purified by affinity chromatography.
Concentration	0.5 mg/ml
Storage & Handling	The antibody solution should be stored undiluted between 2°C and 8°C.
Application	FC - Quality tested IP, WB, IHC-F, IHC-P - Reported in the literature, not verified in house
Recommended Usage	Each lot of this antibody is quality control tested by immunofluorescent staining with flow cytometric analysis . For flow cytometric staining, the suggested use of this reagent is ≤ 0.125 µg per million cells in 100 µl volume. It is recommended that the reagent be titrated for optimal performance for each application.
Application Notes	Additional reported applications (for the relevant formats) include: immunoprecipitation ¹ , Western blotting ¹ , and immunohistochemistry ¹ of acetone-fixed frozen tissue sections and formalin-fixed paraffin-embedded sections.
Application References	1. Solter D and Knowles BB. 1978. <i>Proc. Natl. Acad. Sci. USA</i> . 75:5565. (IHC, IP, WB)
(PubMed link indicates BioLegend citation)	
Product Citations	1. Tempest N, <i>et al.</i> 2018. <i>Hum Reprod</i> . 6:e00392. PubMed 2. Wu W, <i>et al.</i> 2017. <i>Sci Rep</i> . 7:44481. PubMed
RRID	AB_1089196 (BioLegend Cat. No. 125602)

Antigen Details

Structure	Carbohydrate epitope, Lewis blood group antigens
Distribution	Murine embryonic stem cells (ES), embryonal carcinoma cells, 8-cell to blastocyst embryos; human differentiated cells, not on undifferentiated ES cells
Function	Adhesion, differentiation
Cell Type	Embryonic Stem Cells, Neural Stem Cells
Biology Area	Cell Biology, Immunology, Neuroscience, Neuroscience Cell Markers, Stem Cells
Molecular Family	CD Molecules
Antigen References	<ol style="list-style-type: none"> 1. Solter D and Knowles BB. 1978. <i>Proc. Natl. Acad. Sci. USA.</i> 75:5565. 2. Harris JF, <i>et al.</i> 1984. <i>J. Immunol.</i> 132:2502. 3. Gooi HC, <i>et al.</i> 1981. <i>Nature</i> 292:156. 4. Cui L, <i>et al.</i> 2004. <i>J. Histochem. Cytochem.</i> 52:1447.
Gene ID	14345 2526

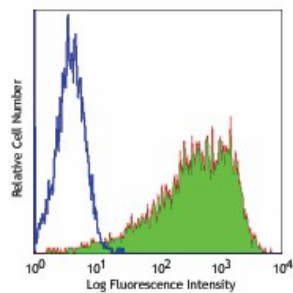
Related Protocols

[Cell Surface Flow Cytometry Staining Protocol](#)

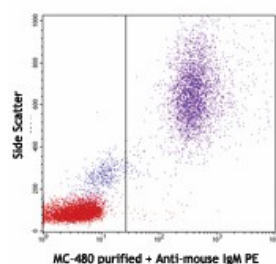
Other Formats

PE anti-mouse/human CD15 (SSEA-1), Biotin anti-mouse/human CD15 (SSEA-1), Purified anti-mouse/human CD15 (SSEA-1), Alexa Fluor® 647 anti-mouse/human CD15 (SSEA-1), Alexa Fluor® 488 anti-mouse/human CD15 (SSEA-1), FITC anti-mouse/human CD15 (SSEA-1), TotalSeq™-A0076 anti-mouse/human CD15 (SSEA-1), APC anti-mouse/human CD15 (SSEA-1), TotalSeq™-C0076 anti-mouse/human CD15 (SSEA-1), TotalSeq™-B0076 anti-mouse/human CD15 (SSEA-1)

Product Data



F9 (mouse embryonic carcinoma cell line) stained with purified MC-480, followed by anti-mouse IgM-PE



Human peripheral blood lymphocytes, monocytes, granulocytes stained with purified MC-480, followed by anti-mouse IgM PE

For research use only. Not for diagnostic use. Not for resale. BioLegend will not be held responsible for patent infringement or other violations that may occur with the use of our products.

*These products may be covered by one or more Limited Use Label Licenses (see the BioLegend Catalog or our website, www.biolegend.com/ordering#license). BioLegend products may not be transferred to third parties, resold, modified for resale, or used to manufacture commercial products, reverse engineer functionally

similar materials, or to provide a service to third parties without written approval of BioLegend. By use of these products you accept the terms and conditions of all applicable Limited Use Label Licenses. Unless otherwise indicated, these products are for research use only and are not intended for human or animal diagnostic, therapeutic or commercial use.

BioLegend Inc., 8999 BioLegend Way, San Diego, CA 92121 www.biolegend.com
Toll-Free Phone: 1-877-Bio-Legend (246-5343) Phone: (858) 768-5800 Fax: (877) 455-9587