

## Purified anti-mouse Ly-6A/E (Sca-1) Recombinant Antibody

<b>Catalog# / Size</b>	163802 / 100 µg
<b>Clone</b>	QA17A36
<b>Regulatory Status</b>	RUO
<b>Other Names</b>	Sca-1
<b>Isotype</b>	Rat IgG1, κ
<b>Description</b>	Ly-6A/E, also known as Sca-1, is an 18 kD member of the Ly-6 multigene family. Ly6A/E is a glycosylphosphatidylinositol (GPI)-linked protein expressed on hematopoietic stem cells. In mice expressing the Ly-6.2 haplotype (e.g., AKR, C57BL, C57BR, DBA/2, SJL, SWR, and 129), Ly-6A/E is also expressed on peripheral B lymphocytes and thymic and peripheral T lymphocytes. Strains expressing the Ly-6.1 haplotype (e.g., BALB/c, CBA, C3H/He, DBA/1, and NZB) have low Ly-6A/E expression on resting peripheral lymphocytes. The expression of Ly-6A/E on lymphocytes is upregulated upon activation from both Ly6.1 and Ly6.2 haplotype mice. Ly-6A/E is thought to be involved in the regulation of both T and B cell responses.

### Product Details

---

<b>Verified Reactivity</b>	Mouse
<b>Antibody Type</b>	Recombinant
<b>Host Species</b>	Rat
<b>Formulation</b>	Phosphate-buffered solution, pH 7.2, containing 0.09% sodium azide
<b>Preparation</b>	The antibody was purified by affinity chromatography.
<b>Concentration</b>	0.5 mg/mL
<b>Storage &amp; Handling</b>	The antibody solution should be stored undiluted between 2°C and 8°C.
<b>Application</b>	<a href="#">FC - Quality tested</a>
<b>Recommended Usage</b>	Each lot of this antibody is quality control tested by <a href="#">immunofluorescent staining with flow cytometric analysis</a> . For flow cytometric staining, the suggested use of this reagent is ≤ 0.06 µg per million cells in 100 µL volume. It is recommended that the reagent be titrated for optimal performance for each application.
<b>RRID</b>	AB_2910344 (BioLegend Cat. No. 163802)

### Antigen Details

---

<b>Structure</b>	Ly-6 multigene family, 18 kD
<b>Distribution</b>	Hematopoietic stem cells, activated T cells and B cells, subset of resting B cells and T cells
<b>Function</b>	Regulates B and T cell responses
<b>Antigen References</b>	<ol style="list-style-type: none"><li>1. Upadhyay G. 2019. <i>Front Immunol.</i> 10:819.</li><li>2. Morrison SJ, <i>et al.</i> 1994. <i>Immunity.</i> 1:661.</li><li>3. Spangrude GJ, <i>et al.</i> 1988. <i>J Immunol.</i> 141:3697.</li></ol>
<b>Gene ID</b>	<a href="#">110454</a>

## Related Protocols

---

[Cell Surface Flow Cytometry Staining Protocol](#)

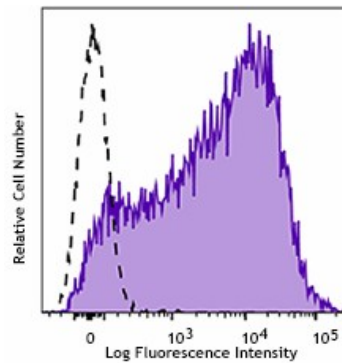
## Other Formats

---

Purified anti-mouse Ly-6A/E (Sca-1) Recombinant Antibody, PE anti-mouse Ly-6A/E (Sca-1) Recombinant Antibody

## Product Data

---



C57BL/6 mouse splenocytes were stained with purified Ly-6A/E (clone QA17A36, filled histogram) or purified rat IgG1,  $\kappa$  isotype control (open histogram), followed by anti-rat IgG1 PE Antibody.

For research use only. Not for diagnostic use. Not for resale. BioLegend will not be held responsible for patent infringement or other violations that may occur with the use of our products.

\*These products may be covered by one or more Limited Use Label Licenses (see the BioLegend Catalog or our website, [www.biolegend.com/ordering#license](http://www.biolegend.com/ordering#license)). BioLegend products may not be transferred to third parties, resold, modified for resale, or used to manufacture commercial products, reverse engineer functionally similar materials, or to provide a service to third parties without written approval of BioLegend. By use of these products you accept the terms and conditions of all applicable Limited Use Label Licenses. Unless otherwise indicated, these products are for research use only and are not intended for human or animal diagnostic, therapeutic or commercial use.

BioLegend Inc., 8999 BioLegend Way, San Diego, CA 92121 [www.biolegend.com](http://www.biolegend.com)  
Toll-Free Phone: 1-877-Bio-Legend (246-5343) Phone: (858) 768-5800 Fax: (877) 455-9587