

## Ultra-LEAF™ Purified anti-human TSLP Antibody

<b>Catalog# / Size</b>	512205 / 100 µg 512206 / 1 mg
<b>Clone</b>	15B11.3
<b>Regulatory Status</b>	RUO
<b>Other Names</b>	Thymic stromal lymphopoietin (TSLP)
<b>Isotype</b>	Mouse IgG1, κ
<b>Description</b>	<p>Thymic Stromal Lymphopoietin (TSLP) is a hemopoietic protein that is expressed in the heart, liver and prostate. TSLP overlaps biological activities with IL-7 and binds with the heterodimeric receptor complex consisting of the IL-7R alpha chain (IL-7Rα) and the TSLP-specific chain (TSLPR). Like IL-7, TSLP induces phosphorylation of STAT3 and STAT5, but uses kinases other than the JAKs for activation. TSLP prohibited apoptosis and stimulated growth of the human acute myeloid leukemia (AML)-derived cell line MUTZ3. It induces the release of T cell-attracting chemokines TARC and MDC from monocytes and activates CD11c(+) dendritic cells (DCs). TSLP activated DCs primed naïve T cells to produce the proallergic cytokines (IL-4, IL-5, IL-13, TNFα) while down-regulating IL-10 and IFN-γ suggesting a role in initiating allergic inflammation. Recent studies revealed that expression of TSLP has a direct link to the pathogenesis of allergic inflammation such as atopic dermatitis and asthma via activating dendritic cells and mast cells which trigger inflammatory Th2 response characterized by high TNF-alpha and little IL-10 production.</p>

### Product Details

---

<b>Verified Reactivity</b>	Human
<b>Antibody Type</b>	Monoclonal
<b>Host Species</b>	Mouse
<b>Immunogen</b>	Recombinant human TSLP
<b>Purity</b>	The Ultra-LEAF™ (Low Endotoxin, Azide-Free) antibody was purified by affinity chromatography.
<b>Formulation</b>	0.2 µm filtered in phosphate-buffered solution, pH 7.2, containing no preservative. Endotoxin level is < 0.01 EU/µg of the protein (< 0.001 ng/µg of the protein) as determined by the LAL test.
<b>Concentration</b>	The antibody is bottled at the concentration indicated on the vial, typically between 2 mg/mL and 3 mg/mL. Older lots may have also been bottled at 1 mg/mL. To obtain lot-specific concentration, please enter the lot number in our <a href="#">Concentration and Expiration Lookup</a> or <a href="#">Certificate of Analysis</a> online tools.
<b>Storage &amp; Handling</b>	The antibody solution should be stored undiluted between 2°C and 8°C. This Ultra-LEAF™ solution contains no preservative; handle under aseptic conditions.
<b>Application</b>	<a href="#">ELISA Capture - Quality tested</a> <a href="#">Neut - Reported in the literature, not verified in house</a>
<b>Recommended Usage</b>	Each lot of this antibody is quality control tested by <a href="#">ELISA assay</a> . For use as an ELISA detection antibody, a concentration range of 1.0 - 4.0 µg/mL is recommended. It is recommended that the reagent be titrated for optimal performance for each application. To obtain a linear standard curve, serial dilutions of TSLP recombinant protein ranging from 200 to 3.1 ng/mL are recommended for each ELISA plate.
<b>Application Notes</b>	ELISA Capture: Purified and Ultra-LEAF™ purified 15B11.3 antibody are useful as a capture antibody for a sandwich ELISA assay, when used in conjunction with the biotinylated Poly5159 antibody (Cat. No. 515903) as the detecting antibody.
<b>Application References</b>	1. Yeh CY, <i>et al.</i> 2013. <i>PLoS One</i> . 8:e55472. (Neut) <a href="#">PubMed</a>
<b>(PubMed link indicates BioLegend citation)</b>	

RRID

AB\_2861042 (BioLegend Cat. No. 512205)  
AB\_2861043 (BioLegend Cat. No. 512206)

## Antigen Details

---

**Biology Area** Immunology

**Molecular Family** Cytokines/Chemokines

**Antigen References**

1. Liu YJ. 2007. *J. Allergy Clin. Immunol.* 120:238.
2. Nagata Y. 2007. *Int. Arch. Allergy Immunol.* 144:305.
3. Jiang Q, *et al.* 2007 *BMC Immunol.* 8:11.
4. Kato A. *et al.* 2007. *J. Immunol.* 179:1080.
5. Rochman I, *et al.* 2007 *J. Immunol.* 178:6720.
6. Reche PA, *et al.* 2001. *J. Immunol.* 167:336.
7. Pandey A, *et al.* 2000. *Nat. Immunol.* 1:59.
8. Park LS, *et al.* 2000. *J Exp. Med.* 192:659.

**Gene ID** [85480](#)

## Related Protocols

---

[Active Protocols: Sandwich ELISA - Video](#)

[Sandwich ELISA Protocol](#)

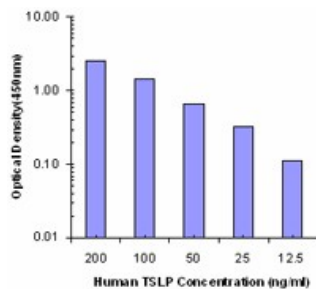
## Other Formats

---

Purified anti-human TSLP, Ultra-LEAF™ Purified anti-human TSLP

## Product Data

---



Human TSLP Direct ELISA (Clone 15B11)

For research use only. Not for diagnostic use. Not for resale. BioLegend will not be held responsible for patent infringement or other violations that may occur with the use of our products.

\*These products may be covered by one or more Limited Use Label Licenses (see the BioLegend Catalog or our website, [www.biolegend.com/ordering#license](http://www.biolegend.com/ordering#license)). BioLegend products may not be transferred to third parties, resold, modified for resale, or used to manufacture commercial products, reverse engineer functionally similar materials, or to provide a service to third parties without written approval of BioLegend. By use of these products you accept the terms and conditions of all applicable Limited Use Label Licenses. Unless otherwise indicated, these products are for research use only and are not intended for human or animal diagnostic, therapeutic or commercial use.

BioLegend Inc., 8999 BioLegend Way, San Diego, CA 92121 [www.biolegend.com](http://www.biolegend.com)  
Toll-Free Phone: 1-877-Bio-Legend (246-5343) Phone: (858) 768-5800 Fax: (877) 455-9587