

## Ultra-LEAF™ Purified anti-mouse CD20 Antibody

<b>Catalog# / Size</b>	152104 / 1 mg 152115 / 5 mg 152116 / 25 mg
<b>Clone</b>	SA271G2
<b>Regulatory Status</b>	RUO
<b>Other Names</b>	Ms4a1, Ly-44
<b>Isotype</b>	Rat IgG2b, κ
<b>Description</b>	CD20 is a 33-37 kD protein, a member of the MS4A family, with four transmembrane spanning regions that present as a homo-oligomeric complexes in the cell surface when associating with MHC class I and II, CD53, CD81, and CD82. CD20 is expressed on B cells and a subset of T cells, but not on plasma cells. CD20 regulates B-cell activation and proliferation. Its ligation promotes transmembrane Ca <sup>2+</sup> trafficking. CD20 is an important therapeutic target in the treatment of B cell lymphomas and leukemias.

### Product Details

<b>Verified Reactivity</b>	Mouse
<b>Antibody Type</b>	Monoclonal
<b>Host Species</b>	Rat
<b>Immunogen</b>	Mouse CD20 transfected cells
<b>Formulation</b>	0.2 μm filtered in phosphate-buffered solution, pH 7.2, containing no preservative. Endotoxin level is <0.01 EU/μg of the protein (<0.001 ng/μg of the protein) as determined by the LAL test.
<b>Preparation</b>	The Ultra-LEAF™ (Low Endotoxin, Azide-Free) antibody was purified by affinity chromatography.
<b>Concentration</b>	The antibody is bottled at the concentration indicated on the vial, typically between 2 mg/mL and 3 mg/mL. Older lots may have also been bottled at 1 mg/mL. To obtain lot-specific concentration, please enter the lot number in our <a href="#">Concentration and Expiration Lookup</a> or <a href="#">Certificate of Analysis</a> online tools.
<b>Storage &amp; Handling</b>	The antibody solution should be stored undiluted between 2°C and 8°C. This Ultra-LEAF™ solution contains no preservative; handle under aseptic conditions.
<b>Application</b>	<a href="#">FC - Quality tested</a> <a href="#">Depletion - Verified</a>
<b>Recommended Usage</b>	Each lot of this antibody is quality control tested by <a href="#">immunofluorescent staining with flow cytometric analysis</a> . For flow cytometric staining, the suggested use of this reagent is ≤0.25 μg per million cells in 100 μl volume or 100 μl of whole blood. It is recommended that the reagent be titrated for optimal performance for each application. Clone SA271G2 has been validated for <i>in vivo</i> depletion of mouse B cells. <a href="#">Learn more...</a>
<b>Additional Product Notes</b>	View more applications data for this product in our <a href="#">Scientific Poster Library</a> .  Watch a <a href="#">Scientific Poster video</a> of this product.
<b>Application References</b>	1. Bongard, A, <i>et al.</i> 2019. <i>PLoS Pathog.</i> 15(9):e1008043. (Depletion) <a href="#">PubMed</a>
<b>(PubMed link indicates BioLegend citation)</b>	
<b>Product Citations</b>	1. Tang KH, <i>et al.</i> 2022. <i>Cancer Discov.</i> 12:47. <a href="#">PubMed</a> 2. Carnasciali A, <i>et al.</i> 2021. <i>J Neuroimmune Pharmacol.</i> 16:376. <a href="#">PubMed</a> 3. Suah AN, <i>et al.</i> 2021. <i>J Clin Invest.</i> 131:1. <a href="#">PubMed</a> 4. Sodir NM, <i>et al.</i> 2020. <i>Cancer Discov.</i> 0.825. <a href="#">PubMed</a>

5. Steffen E, *et al.* 2020. *Basic Res Cardiol.* 18:115. [PubMed](#)
6. Vito A, *et al.* 2021. *Commun Biol.* 4:859. [PubMed](#)
7. Kong H, *et al.* 2020. *PLoS Pathog.* 16:e1008947. [PubMed](#)
8. Rocha-Resende C, *et al.* 2021. *J Mol Cell Cardiol.* 157:98. [PubMed](#)
9. Hollern DP, *et al.* 2020. *Cell.* 179(5):1191-1206.e21.. [PubMed](#)
10. Chen YQ, *et al.* 2019. *J Immunother Cancer.* 0.415277778. [PubMed](#)

**RRID** AB\_2629619 (BioLegend Cat. No. 152104)  
AB\_2629619 (BioLegend Cat. No. 152115)  
AB\_2629619 (BioLegend Cat. No. 152116)

## Antigen Details

---

<b>Structure</b>	Member of the MS4A family, four transmembrane spanning regions, three isoforms of 37, 35, and 37 kD, depending on the phosphorylation degree.
<b>Distribution</b>	B cells and a subset of T cells
<b>Function</b>	Regulates B-cell activation and proliferation
<b>Interaction</b>	Associates with MHC class I and II, CD53, CD81, and CD82
<b>Cell Type</b>	B cells, T cells
<b>Biology Area</b>	Costimulatory Molecules, Immunology
<b>Molecular Family</b>	CD Molecules
<b>Antigen References</b>	1. Morsy DE, <i>et al.</i> 2013. <i>J. Immunol.</i> 191:3112. 2. Lund FE, Randall TD. 2010. <i>Nat. Rev. Immunol.</i> 10:236. 3. Beers SA, <i>et al.</i> 2010. <i>Blood</i> 115:5191. 4. Kuijpers TW, <i>et al.</i> 2010. <i>J. Clin. Invest.</i> 120:214.
<b>Gene ID</b>	<a href="#">12482</a>

## Related Protocols

---

[Cell Surface Flow Cytometry Staining Protocol](#)

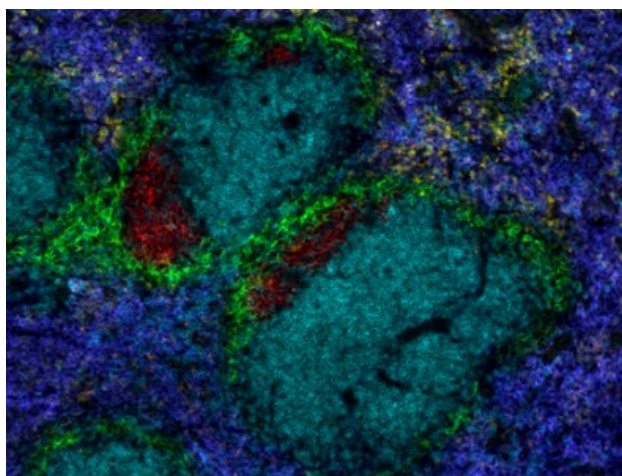
## Other Formats

---

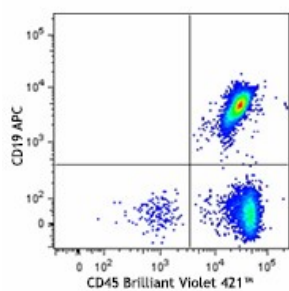
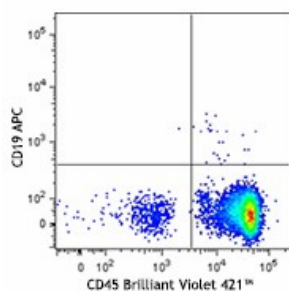
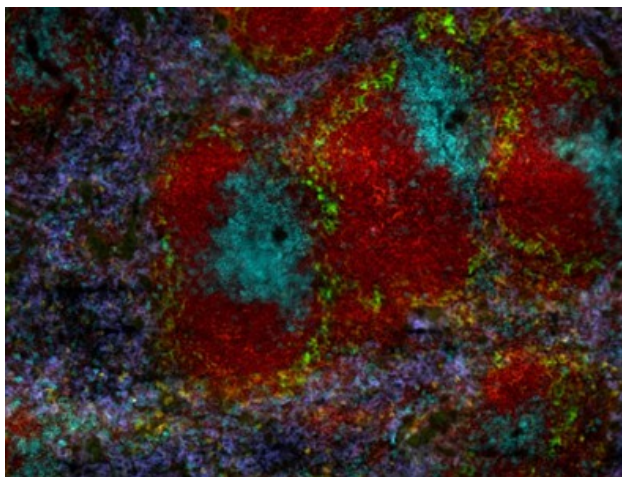
Purified anti-mouse CD20, Ultra-LEAF™ Purified anti-mouse CD20, PE anti-mouse CD20, APC anti-mouse CD20, PE/Dazzle™ 594 anti-mouse CD20 Antibody, FITC anti-mouse CD20, PE/Cyanine5 anti-mouse CD20, APC/Fire™ 750 anti-mouse CD20

## Product Data

---



C57BL/6 mice were injected intravenously with 250 µg of Ultra-LEAF™ Purified anti-mouse CD20 (clone SA271G2) (top panel) or Ultra-LEAF™ purified rat IgG2b, isotype control (bottom panel). At day 7, the mice were sacrificed, spleens were collected, sectioned and stained for microscopy analysis. CD19 is shown in red, CD3 in cyan, CD169 in green, CD11b in yellow, and F4/80 in blue.



C57BL/6J mice were injected i.v. with 250 µg of Ultra-LEAF™ purified anti-mouse CD20 (clone SA271G2) (top) or Ultra-LEAF™ purified rat IgG2b, κ isotype control. At day 7 the mice were bled and the samples were stained with anti-mouse CD19 APC and anti-mouse CD45 Brilliant Violet 421™. Data shown is representative of 4 mice per group.

For research use only. Not for diagnostic use. Not for resale. BioLegend will not be held responsible for patent infringement or other violations that may occur with the use of our products.

\*These products may be covered by one or more Limited Use Label Licenses (see the BioLegend Catalog or our website, [www.biolegend.com/ordering#license](http://www.biolegend.com/ordering#license)). BioLegend products may not be transferred to third parties, resold, modified for resale, or used to manufacture commercial products, reverse engineer functionally similar materials, or to provide a service to third parties without written approval of BioLegend. By use of these products you accept the terms and conditions of all applicable Limited Use Label Licenses. Unless otherwise indicated, these products are for research use only and are not intended for human or animal diagnostic, therapeutic or commercial use.

BioLegend Inc., 8999 BioLegend Way, San Diego, CA 92121 [www.biolegend.com](http://www.biolegend.com)  
Toll-Free Phone: 1-877-Bio-Legend (246-5343) Phone: (858) 768-5800 Fax: (877) 455-9587