

Alexa Fluor® 647 anti-human CD163 Antibody

Catalog# / Size	333619 / 25 tests 333620 / 100 tests
Clone	GHI/61
Regulatory Status	RUO
Workshop	VI M38
Other Names	GHI/61, M130, RM3/1, p155, Hemoglobin/Haptoglobin Complex Receptor, macrophage-associated antigen, ED2(rat)
Isotype	Mouse IgG1, κ
Description	CD163 is a member of the group B scavenger receptor cysteine-rich superfamily, also known as GHI/61, M130, RM3/1, p155, hemoglobin-haptoglobin complex receptor, or macrophage-associated antigen. It is a 134 kD (non-reduced)/155 kD (reduced) glycoprotein primarily expressed on macrophages, Kupffer cells, monocytes, a subset of dendritic cells, and a subset of hematopoietic stem/progenitor cells. CD163 binds to haptoglobin-hemoglobin complex and TWEAK, and plays a role in clearing hemoglobin and regulating cytokine production by macrophages. Membrane CD163 can be cleaved by metalloproteinases (MMP), resulting in a soluble form. Elevated serum level of sCD163 has been implicated in many kinds of inflammatory diseases.

Product Details

Verified Reactivity	Human, Cynomolgus, Rhesus
Reported Reactivity	African Green
Antibody Type	Monoclonal
Host Species	Mouse
Formulation	Phosphate-buffered solution, pH 7.2, containing 0.09% sodium azide and BSA (origin USA)
Preparation	The antibody was purified by affinity chromatography and conjugated with Alexa Fluor® 647 under optimal conditions.
Concentration	Lot-specific (to obtain lot-specific concentration, please enter the lot number in our Concentration and Expiration Lookup or Certificate of Analysis online tools.)
Storage & Handling	The antibody solution should be stored undiluted between 2°C and 8°C, and protected from prolonged exposure to light. Do not freeze.
Application	FC - Quality tested SB - Reported in the literature, not verified in house
Recommended Usage	Each lot of this antibody is quality control tested by immunofluorescent staining with flow cytometric analysis . For flow cytometric staining, the suggested use of this reagent is 5 µl per million cells in 100 µl staining volume or 5 µl per 100 µl of whole blood. * Alexa Fluor® 647 has a maximum emission of 668 nm when it is excited at 633 nm / 635 nm. Alexa Fluor® and Pacific Blue™ are trademarks of Life Technologies Corporation. View full statement regarding label licenses
Excitation Laser	Red Laser (633 nm)
Application Notes	Clone GHI/61 binds to domain 7 of CD163. Additional reported applications (for the relevant formats) include: immunocytochemical staining, immunoprecipitation, western blot ¹ , and spatial biology (IBEX) ^{6,7} .
Additional Product Notes	Iterative Bleaching Extended multi-pleXity (IBEX) is a fluorescent imaging technique capable of highly-multiplexed spatial analysis. The method relies on cyclical bleaching of panels of fluorescent

antibodies in order to image and analyze many markers over multiple cycles of staining, imaging, and, bleaching. It is a community-developed open-access method developed by the Center for Advanced Tissue Imaging (CAT-I) in the National Institute of Allergy and Infectious Diseases (NIAID, NIH).

Application References

(PubMed link indicates BioLegend citation)

1. Pulford K, *et al.* 1992. *Immunology* 75:588. (ICC, IP, WB)
2. Law SK, *et al.* 1993. *Eur. J. Immunol.* 23:2320.
3. Madsen M, *et al.* 2004. *J. Biol. Chem.* 279:51561.
4. Kim WK, *et al.* 2006. *Am. J. Pathol.* 168:822. (FC)
5. Buttari B, *et al.* 2011. *Atherosclerosis.* 215:316. [PubMed](#)
6. Radtke AJ, *et al.* 2020. *Proc Natl Acad Sci USA.* 117:33455-33465. (SB) [PubMed](#)
7. Radtke AJ, *et al.* 2022. *Nat Protoc.* 17:378-401. (SB) [PubMed](#)

Product Citations

1. Takiguchi H, *et al.* 2021. *Scientific Reports.* 11(1):8282. [PubMed](#)
2. Kubala MH, *et al.* 2018. *Cell Rep.* 25:2177. [PubMed](#)

RRID

AB_2563474 (BioLegend Cat. No. 333619)
AB_2563475 (BioLegend Cat. No. 333620)

Antigen Details

Structure	134 kD (non-reduced)/155 kD (reduced) glycoprotein, scavenger receptor superfamily
Distribution	Monocytes, macrophages, Kuffer cells, subset of dendritic cells, subset of hematopoietic stem/progenitor cells
Function	Clearance of haptoglobin-hemoglobin complex, regulation of cytokine production by macrophages
Ligand/Receptor	Haptoglobin-hemoglobin complex, TWEAK
Cell Type	Dendritic cells, Hematopoietic stem and progenitors, Macrophages, Monocytes
Biology Area	Cell Biology, Immunology, Innate Immunity, Neuroscience, Neuroscience Cell Markers
Molecular Family	CD Molecules
Antigen References	<ol style="list-style-type: none">1. Roth J, <i>et al.</i> 1994 <i>Transplantation.</i> 57:1272. Van den Heuvel MM, <i>et al.</i> 1999 <i>J. Leukoc. Biol.</i> 66:8583. Sulahian TH, <i>et al.</i> 2000 <i>Cytokines</i> 12:13124. Fabrick BO, <i>et al.</i> 2007 <i>J. Neuroimmunol.</i> 187:179
Gene ID	9332

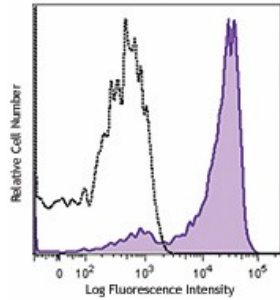
Related Protocols

[Cell Surface Flow Cytometry Staining Protocol](#)

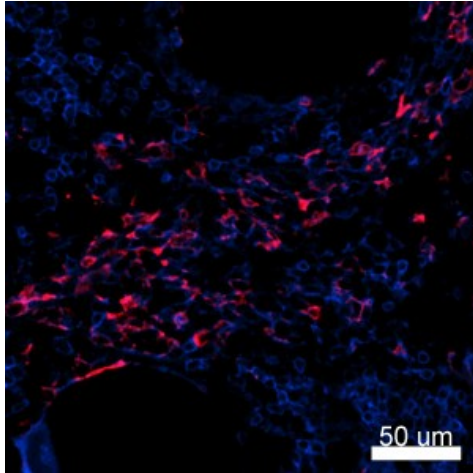
Other Formats

PerCP anti-human CD163, Purified anti-human CD163, Biotin anti-human CD163, PE anti-human CD163, PerCP/Cyanine5.5 anti-human CD163, APC anti-human CD163, Brilliant Violet 421™ anti-human CD163, PE/Cyanine7 anti-human CD163, Brilliant Violet 605™ anti-human CD163, FITC anti-human CD163, Alexa Fluor® 647 anti-human CD163, APC/Cyanine7 anti-human CD163, PE/Dazzle™ 594 anti-human CD163, Brilliant Violet 510™ anti-human CD163, Brilliant Violet 711™ anti-human CD163, Brilliant Violet 785™ anti-human CD163, APC/Fire™ 750 anti-human CD163, TotalSeq™-A0358 anti-human CD163, TotalSeq™-C0358 anti-human CD163, TotalSeq™-B0358 anti-human CD163, PE/Cyanine5 anti-human CD163, TotalSeq™-D0358 anti-human CD163

Product Data



Human peripheral blood monocytes were stained with CD163 (clone GHI/63) Alexa Fluor® 647 (filled histogram) or mouse IgG1, κ Alexa Fluor® 647 isotype control (open histogram).



Confocal image of human lymph node sample acquired using the IBEX method of highly multiplexed antibody-based imaging: CD163 (red) in Cycle 3 and CD4 (blue) in Cycle 5. Tissues were prepared using ~1% (vol/vol) formaldehyde and a detergent. Following fixation, samples are immersed in 30% (wt/vol) sucrose for cryoprotection. Images are courtesy of Drs. Andrea J. Radtke and Ronald N. Germain of the Center for Advanced Tissue Imaging (CAT-I) in the National Institute of Allergy and Infectious Diseases (NIAID, NIH).

For research use only. Not for diagnostic use. Not for resale. BioLegend will not be held responsible for patent infringement or other violations that may occur with the use of our products.

*These products may be covered by one or more Limited Use Label Licenses (see the BioLegend Catalog or our website, www.biolegend.com/ordering#license). BioLegend products may not be transferred to third parties, resold, modified for resale, or used to manufacture commercial products, reverse engineer functionally similar materials, or to provide a service to third parties without written approval of BioLegend. By use of these products you accept the terms and conditions of all applicable Limited Use Label Licenses. Unless otherwise indicated, these products are for research use only and are not intended for human or animal diagnostic, therapeutic or commercial use.

BioLegend Inc., 8999 BioLegend Way, San Diego, CA 92121 www.biolegend.com
Toll-Free Phone: 1-877-Bio-Legend (246-5343) Phone: (858) 768-5800 Fax: (877) 455-9587