

## Anti-Synuclein- $\alpha/\beta$ , 130-140 Antibody (Previously Covance catalog# MMS-529R)

<b>Catalog# / Size</b>	836602 / 25 $\mu$ L 836601 / 200 $\mu$ L
<b>Clone</b>	Syn 202
<b>Regulatory Status</b>	RUO
<b>Other Names</b>	Synuclein alpha-140, non-A4 component of amyloid, alpha-synuclein, isoform NACP140, non-A beta component of AD amyloid Parkinson disease (autosomal dominant, Lewy body) 4
<b>Previously</b>	Covance Catalog# MMS-529R
<b>Isotype</b>	Mouse IgG2a
<b>Description</b>	Synucleins are small soluble proteins expressed primarily in neural tissues and in certain tumors. The family includes 3 known proteins, alpha synuclein, beta synuclein and gamma synuclein. All synucleins have in common a highly conserved alpha helical lipid binding motif with similarity to the class-A2 lipid binding domains of the exchangeable apolipoproteins. The alpha and beta synuclein proteins are found primarily in brain tissue, where they are seen mainly in pre-synaptic terminals. Alpha synuclein is believed to be a major component of Lewy bodies in Parkinson's disease. Mutations in alpha synuclein are associated with rare familial cases of early onset Parkinson's disease, Alzheimer's disease and several other neurodegenerative illnesses.

### Product Details

<b>Verified Reactivity</b>	Human, Mouse
<b>Antibody Type</b>	Monoclonal
<b>Host Species</b>	Mouse
<b>Immunogen</b>	Syn 202 was raised using recombinant alpha and beta synucleins and recognizes residues 130-140 in alpha and beta synuclein.
<b>Preparation</b>	Ascites
<b>Concentration</b>	The concentration is not quantified as this product is sold as undiluted crude mouse ascites fluid. The concentration might vary from lot-to-lot and an estimated concentration would be 1-3 mg/ml.
<b>Storage &amp; Handling</b>	Store at -20°C. Upon initial thawing, apportion into working aliquots and store at -20°C. Avoid repeated freeze-thaw cycles to prevent denaturing the antibody. For long-term storage, keep the antibody at -80°C.
<b>Application</b>	<a href="#">IHC-P - Quality tested</a> <a href="#">WB - Verified</a> <a href="#">EM, ICC, IP - Reported in the literature, not verified in house</a>
<b>Recommended Usage</b>	Each lot of this antibody is quality control tested by formalin-fixed paraffin-embedded immunohistochemical staining. For immunohistochemistry, a dilution range of 1:500-1:1000 is suggested. For Western blotting, the suggested dilution of this reagent is 1:500-1:1000. It is recommended that the reagent be titrated for optimal performance for each application.
<b>Application Notes</b>	This antibody is effective in immunoblotting (WB), immunoprecipitation (IP), and immunohistochemistry of formalin-fixed paraffin-embedded tissue sections (IHC-P).
<b>Application References</b>	<ol style="list-style-type: none"> <li>1. Nibe K, <i>et al.</i> 2009. <i>Vet. Pathol.</i> 46(3):474-83. <b>(IHC)</b></li> <li>2. Giasson BI, <i>et al.</i> 2000. <i>J. Neurosci. Res.</i> 59(4):528-33.</li> <li>3. Mazzulli JR, <i>et al.</i> 2011. <i>Cell</i> 146:37. <b>(WB)</b></li> <li>4. Giasson BI, <i>et al.</i> 1999. <i>J. Biol. Chem.</i> 274:7619. <b>(EM)</b></li> <li>5. Giasson BI, <i>et al.</i> 2002. <i>Neuron.</i> 34:521. <b>(ICC)</b></li> <li>6. Usenovic M, <i>et al.</i> 2012. <i>J. Neurosci.</i> 32:4240. <b>(WB)</b> <a href="#">PubMed</a></li> <li>7. Morrison GJ, <i>et al.</i> 2012. <i>PLoS One</i> 7:e43288. <b>(IP)</b></li> </ol>
<b>(PubMed link indicates BioLegend citation)</b>	

8. Knight AL, *et al.* 2014. *Cell Metab.* 20:145. **(WB)** [PubMed](#)

### Product Citations

1. Knight A, *et al.* 2014. *Cell Metab.* 20:145-157. [PubMed](#)
2. Usenovic M, *et al.* 2012. *J Neurosci.* 32:4240-4246. [PubMed](#)
3. Stoyka LE, *et al.* 2021. *eneuro.* 8(3):. [PubMed](#)

### RRID

AB\_2734606 (BioLegend Cat. No. 836602)  
AB\_2565365 (BioLegend Cat. No. 836601)

## Antigen Details

---

<b>Biology Area</b>	Cell Biology, Neurodegeneration, Neuroscience, Protein Misfolding and Aggregation
<b>Molecular Family</b>	$\alpha$ -Synuclein
<b>Gene ID</b>	<a href="#">6622</a>

## Related Protocols

---

[Western Blotting Protocol](#)

[Immunohistochemistry Protocol for Paraffin-Embedded Sections](#)

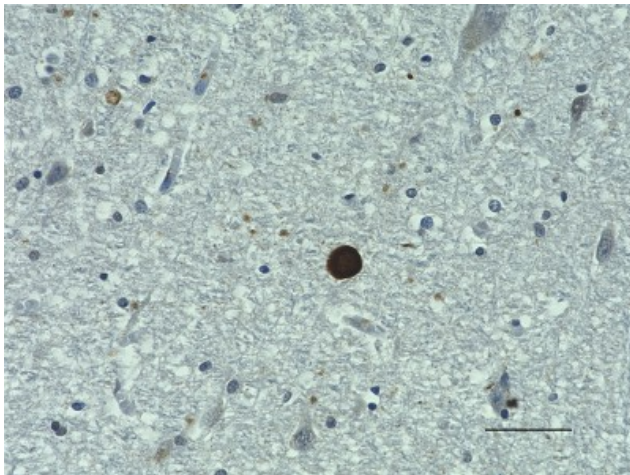
## Other Formats

---

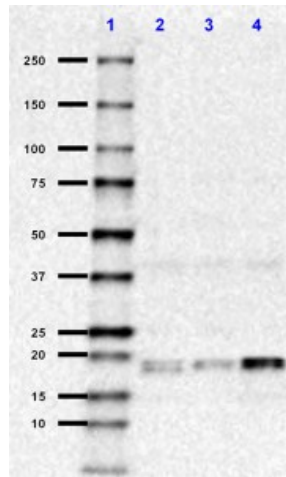
Anti-Synuclein- $\alpha/\beta$ , 130-140

## Product Data

---



IHC staining of anti-Synuclein- $\alpha/\beta$ , 130-140 antibody (clone Syn 202) on formalin-fixed paraffin-embedded human Parkinson's disease brain tissue. Following antigen retrieval using Sodium Citrate H.I.E.R (Cat. No. 928602), the tissue was incubated with the primary antibody at 1:500 dilution overnight at 4°C. BioLegend's Ultra-Streptavidin (USA) HRP Kit (Multi-Species, DAB, Cat. No. 929901) was used for detection followed by hematoxylin counterstaining, according to the protocol provided. The image was captured with a 40X objective. Scale bar: 50  $\mu$ m



Western blot of anti-Synuclein- $\alpha/\beta$ , 130-140 antibody (clone Syn 202). Lane 1: Molecular weight marker; Lane 2: 20  $\mu$ g of human Parkinson's disease brain lysate; Lane 3: 20  $\mu$ g of normal human cerebral cortex lysate; Lane 4: 20  $\mu$ g of mouse brain lysate. The blot was incubated with the primary antibody diluted at 1:500 dilution overnight at 4°C, followed by incubation with HRP labeled goat anti-mouse IgG (Cat. No. 405306). Enhanced chemiluminescence was used as the detection system.

For research use only. Not for diagnostic use. Not for resale. BioLegend will not be held responsible for patent infringement or other violations that may occur with the use of our products.

\*These products may be covered by one or more Limited Use Label Licenses (see the BioLegend Catalog or our website, [www.biolegend.com/ordering#license](http://www.biolegend.com/ordering#license)). BioLegend products may not be transferred to third parties, resold, modified for resale, or used to manufacture commercial products, reverse engineer functionally similar materials, or to provide a service to third parties without written approval of BioLegend. By use of these products you accept the terms and conditions of all applicable Limited Use Label Licenses. Unless otherwise indicated, these products are for research use only and are not intended for human or animal diagnostic, therapeutic or commercial use.

BioLegend Inc., 8999 BioLegend Way, San Diego, CA 92121 [www.biolegend.com](http://www.biolegend.com)  
Toll-Free Phone: 1-877-Bio-Legend (246-5343) Phone: (858) 768-5800 Fax: (877) 455-9587