

## APP/A $\beta$ Antibody Sampler Kit

<b>Catalog# / Size</b>	899910 / 1 kit
<b>Regulatory Status</b>	RUO
<b>Other Names</b>	Please refer to individual product datasheets.

**Description** The A $\beta$  Antibody Sampler Kit offers flexibility for sampling and detection of full-length amyloid precursor protein (APP) and various APP cleavage fragments including A $\beta$  1-40 and A $\beta$  1-42 peptides. The kit also includes clone 3A1, which offers unique advantages over gold standard antibodies for A $\beta$  detection such as clones 6E10 and 4G8. In addition to detecting C-terminally processed fragments of APP, clone 3A1 shows preference for aggregated A $\beta$  and demonstrates no cross-reactivity with APP. Clone M3.2 recognizes rodent A $\beta$ ,  $\beta$ -CTF, sAPP- $\alpha$ , and full-length APP. Clone M3.2 has negligible cross-reactivity with human isoforms of APP and A $\beta$ . The antibodies provided in this kit are highly suitable for WB, IHC, and ELISA applications.

### Kit Contents

#### Kit Contents

Specificity	Format	Clone	Size	Reactivity	Isotype
<a href="#">Anti-<math>\beta</math>-Amyloid, 1-16</a>	Purified	6E10	25 $\mu$ l	Human	Mouse IgG1
<a href="#">Anti-mouse/rat <math>\beta</math>-Amyloid, 1-16</a>	Purified	M3.2	25 $\mu$ l	Mouse, Rat	Mouse IgG1, $\kappa$
<a href="#">Anti-<math>\beta</math>-Amyloid, 1-40</a>	Purified	11A50-B10	50 $\mu$ l	Human	Mouse IgG1
<a href="#">Anti-<math>\beta</math>-Amyloid, 1-42</a>	Purified	12F4	50 $\mu$ l	Human, Mouse, Rat	Mouse IgG1
<a href="#">Anti-<math>\beta</math>-Amyloid, 1-15</a>	Purified	3A1	25 $\mu$ g	Human	Mouse IgG1, $\kappa$

\* For detailed information about each specificity, please refer to the datasheets of the individual products.

### Product Details

<b>Formulation</b>	Please refer to individual product datasheets of the purified formats for details.
<b>Preparation</b>	All antibodies in this kit were purified by affinity chromatography.
<b>Storage &amp; Handling</b>	Upon receipt, store undiluted at 2-8°C.
<b>Application</b>	<a href="#">WB, IHC-P, IHC-F - Quality tested</a>
<b>Recommended Usage</b>	Each lot of antibodies in this kit is quality control tested by Western blotting. For Western blotting, the suggested uses of these reagents are as follows:  Anti- $\beta$ -Amyloid, 1-16: 0.2 - 1.0 $\mu$ g/ml Anti-mouse/rat $\beta$ -Amyloid, 1-16: 0.1 - 5.0 $\mu$ g/ml  For immunohistochemistry on formalin-fixed paraffin-embedded tissue, the suggested use of this reagent is as follows:

Anti- $\beta$ -Amyloid, 1-40: 5.0 - 10  $\mu$ g/ml  
Anti- $\beta$ -Amyloid, 1-42: 0.2 - 5.0  $\mu$ g/ml

For immunohistochemistry on frozen tissue, the suggested use of this reagent is as follows:

Anti- $\beta$ -Amyloid, 1-15: 1.0 - 5.0  $\mu$ g/ml

It is recommended that the reagent be titrated for optimal performance for each application.

#### Application Notes

For verified or reported applications for these antibodies, please see individual product datasheets.

## Antigen Details

<b>Biology Area</b>	Cell Biology, Neurodegeneration, Neuroscience, Protein Misfolding and Aggregation
<b>Molecular Family</b>	APP/ $\beta$ -Amyloid
<b>Gene ID</b>	<a href="#">351</a>

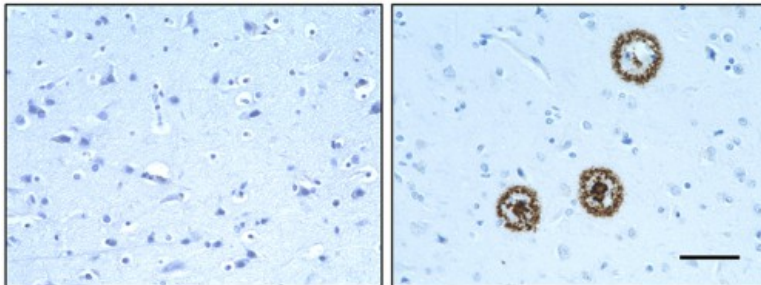
## Related Protocols

[Immunohistochemistry Protocol for Frozen Sections](#)

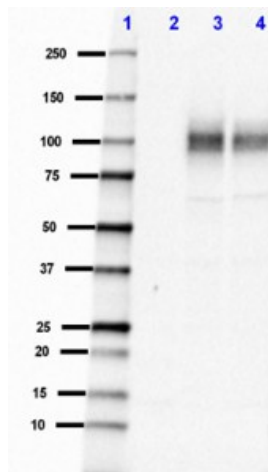
[Western Blotting Protocol](#)

[Immunohistochemistry Protocol for Paraffin-Embedded Sections](#)

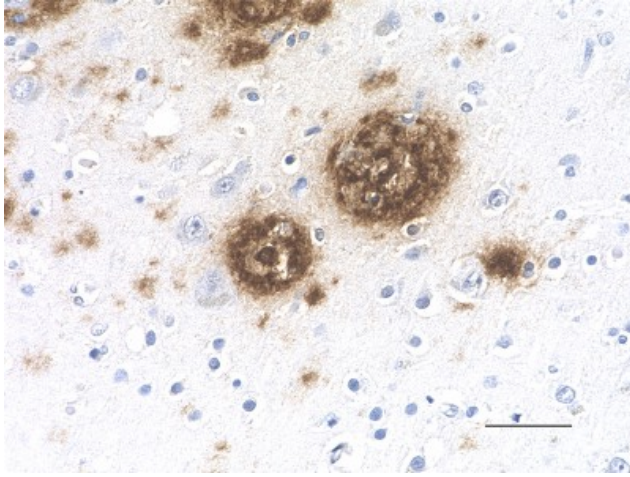
## Product Data



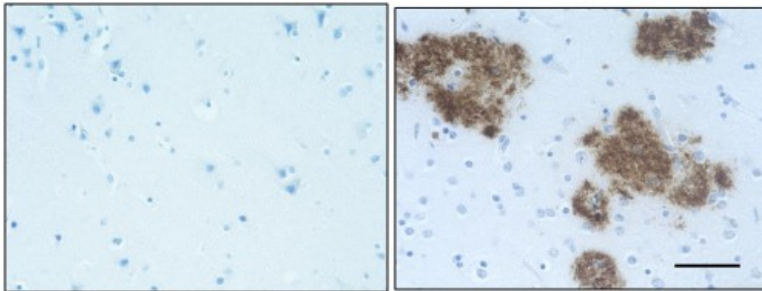
IHC staining of purified anti- $\beta$ -Amyloid, 1-16 antibody (clone 6E10) on the formalin-fixed paraffin-embedded normal human (left panel) and Alzheimer's disease (right panel) brain tissues. Following antigen retrieval using 70% formic acid for 20 minutes, the tissues were incubated with 1  $\mu$ g/mL of the primary antibody for 1 hour at room temperature. BioLegend's Ultra-Streptavidin (USA) HRP kit (Multi-Species, DAB, Cat. No. 929901) was used for detection followed by hematoxylin and bluing solution counterstaining, according to the protocol provided. The images were captured with a 40X objective. Scale bar: 50  $\mu$ m



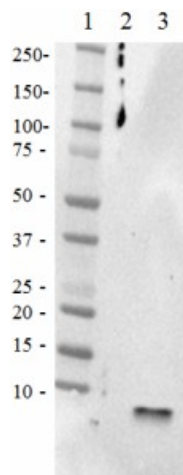
Western blot of purified anti-mouse/rat  $\beta$ -Amyloid, 1-16 antibody (clone M3.2). Lane 1: Molecular weight marker; Lane 2: 20  $\mu$ g of human brain total lysate; Lane 3: 20  $\mu$ g of mouse brain total lysate; Lane 4: 20  $\mu$ g of rat brain total lysate. The blot was incubated with 0.025  $\mu$ g/mL of the primary antibodies overnight at 4°C, followed by incubation with HRP labeled goat anti-mouse IgG (Cat. No. 405301). Enhanced chemiluminescence was used as the detection system.



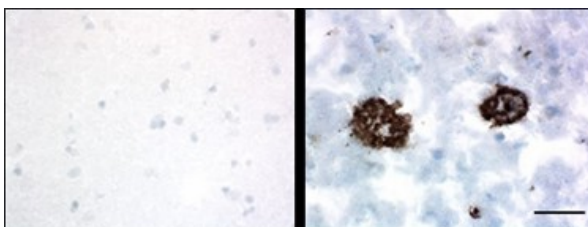
IHC staining of purified anti-β-Amyloid, 1-40 antibody (clone 11A50-B10) on formalin-fixed paraffin-embedded Alzheimer's disease brain tissue. Following antigen retrieval using 70% formic acid for 20 minutes at room temperature, the tissue was incubated with 10 μg/ml of the primary antibody overnight at 4°C. BioLegend's Ultra-Streptavidin (USA) HRP kit (Multi-Species, DAB, Cat. No. 929901) was used for detection followed by hematoxylin counterstaining, according to the protocol provided. The image was captured with a 40X objective. Scale bar: 50 μm



IHC staining of the purified anti-β-Amyloid, 1-42 antibody (12F4) on the formalin-fixed paraffin-embedded brain tissues from normal human (left panel) and patients with Alzheimer's disease (left panel) and normal human brain tissue (right panel). Following antigen retrieval using 70% formic acid for 20 min, the tissue was incubated overnight with 1 μg/mL of the primary antibody at 4°C. BioLegend's Ultra-Streptavidin (USA) HRP kit (Multi-Species, DAB, Cat. No. 929901) was used for detection followed by hematoxylin and bluing solution counterstaining, according to the protocol provided. The image was captured with a 40X objective. Scale bar: 50 μm



Western blot of the purified anti-β-amyloid, 1-42 antibody (clone 12F4). Lane 1: Molecular weight marker; Lane 2: 50 ng of the human Aβ1-40 peptide; Lane 3: 50 ng of the Aβ1-42 peptide. The blot was incubated with 1 μg/ml of the primary antibody overnight at 4°C, followed by incubation with the HRP-labeled goat anti-mouse IgG (cat: 405306). Enhanced chemiluminescence was used as the detection system.



IHC staining of purified anti-β-Amyloid, 1-15 antibody (clone 3A1) on frozen normal (left panel) and Alzheimer's disease (right panel) human brain tissues. The tissues were incubated with 1 μg/mL of the primary antibody overnight at 4°C. BioLegend's Ultra Streptavidin HRP Detection Kit (Cat. No. 929901) was used for detection followed by hematoxylin and bluing solution counterstaining, according to the protocol provided. The images were captured with a 40X objective. Scale bar: 50 μm.

use of our products.

\*These products may be covered by one or more Limited Use Label Licenses (see the BioLegend Catalog or our website, [www.biolegend.com/ordering#license](http://www.biolegend.com/ordering#license)). BioLegend products may not be transferred to third parties, resold, modified for resale, or used to manufacture commercial products, reverse engineer functionally similar materials, or to provide a service to third parties without written approval of BioLegend. By use of these products you accept the terms and conditions of all applicable Limited Use Label Licenses. Unless otherwise indicated, these products are for research use only and are not intended for human or animal diagnostic, therapeutic or commercial use.

BioLegend Inc., 8999 BioLegend Way, San Diego, CA 92121 [www.biolegend.com](http://www.biolegend.com)  
Toll-Free Phone: 1-877-Bio-Legend (246-5343) Phone: (858) 768-5800 Fax: (877) 455-9587