

## FITC anti-human CD206 (MMR) Antibody

<b>Catalog# / Size</b>	321103 / 25 tests 321104 / 100 tests
<b>Clone</b>	15-2
<b>Regulatory Status</b>	RUO
<b>Other Names</b>	MMR (macrophage mannose receptor), MR (mannose receptor), CD206, MRC1
<b>Isotype</b>	Mouse IgG1, $\kappa$
<b>Description</b>	Macrophage mannose receptor (MMR) is a 162-175 kD type I membrane protein also known as CD206, MRC1, or mannose receptor (MR). It is a pattern recognition receptor (PRR) that belongs to C-type lectin superfamily. MMR is expressed on macrophages, dendritic cells, and hepatic or lymphatic endothelial cells, but not on monocytes. MMR recognizes a range of microbial carbohydrates bearing mannose, fucose, or N-acetyl glucosamine. MMR mediates endocytosis and phagocytosis, induces activation of macrophages and antigen presentation, plays an important role in host defense, and provides a link between innate and adaptive immunity.

### Product Details

---

<b>Verified Reactivity</b>	Human
<b>Antibody Type</b>	Monoclonal
<b>Host Species</b>	Mouse
<b>Immunogen</b>	Purified human mannose receptor
<b>Formulation</b>	Phosphate-buffered solution, pH 7.2, containing 0.09% sodium azide and BSA (origin USA)
<b>Preparation</b>	The antibody was purified by affinity chromatography, and conjugated with FITC under optimal conditions.
<b>Concentration</b>	Lot-specific (to obtain lot-specific concentration, please enter the lot number in our <a href="#">Concentration and Expiration Lookup</a> or <a href="#">Certificate of Analysis</a> online tools.)
<b>Storage &amp; Handling</b>	The antibody solution should be stored undiluted between 2°C and 8°C, and protected from prolonged exposure to light. <b>Do not freeze.</b>
<b>Application</b>	<a href="#">FC - Quality tested</a>
<b>Recommended Usage</b>	Each lot of this antibody is quality control tested by <a href="#">immunofluorescent staining with flow cytometric analysis</a> . For flow cytometric staining, the suggested use of this reagent is 5 $\mu$ l per million cells in 100 $\mu$ l staining volume or 5 $\mu$ l per 100 $\mu$ l of whole blood.
<b>Excitation Laser</b>	Blue Laser (488 nm)
<b>Application Notes</b>	The 15-2 antibody blocks the interaction of MMR with its ligand, and inhibits mannose receptor-mediated degradation of t-PA by macrophages. Additional reported applications of this antibody (for the relevant formats) include: Western blotting <sup>1</sup> , blocking of ligand binding <sup>1,2</sup> , immunofluorescence <sup>3</sup> , and immunohistochemical staining of acetone-fixed frozen tissue sections <sup>1</sup> . The Ultra-LEAF™ purified antibody (Endotoxin < 0.01 EU/ $\mu$ g, Azide-Free, 0.2 $\mu$ m filtered) is recommended for functional assays (Cat. No. 321149 and 321150).
<b>Application References</b>	1. Noorman F, <i>et al.</i> 1997. <i>J. Leukocyte Biol.</i> 61:63. (WB, IHC, Block) 2. Barrett-Bergshoeff M, <i>et al.</i> 1997. <i>Thromb Haemost.</i> 77:718. (Block) 3. Kato M, <i>et al.</i> 2007. <i>J. Immunol.</i> 179:6052. (IF)
<b>(PubMed link indicates BioLegend citation)</b>	
<b>Product Citations</b>	1. Argüello RJ, <i>et al.</i> 2020. <i>Cell Metab.</i> 32:1063. <a href="#">PubMed</a> 2. Feuerer N, <i>et al.</i> 2021. <i>Proc Natl Acad Sci U S A.</i> 118:. <a href="#">PubMed</a> 3. Conforti A, <i>et al.</i> 2021. <i>PLoS One.</i> 16:e0259894. <a href="#">PubMed</a> 4. Yoshimori M, <i>et al.</i> 2021. <i>Cancers (Basel).</i> 13:. <a href="#">PubMed</a>

5. Nyazika TK, *et al.* 2022. *Front Immunol.* 13:992659. [PubMed](#)
6. Ma C, *et al.* 2022. *Proc Natl Acad Sci U S A.* 119:. [PubMed](#)
7. Teng YY, *et al.* 2022. *Front Bioeng Biotechnol.* 10:902894. [PubMed](#)
8. Shen M, *et al.* 2018. *Int J Oncol.* 53:317. [PubMed](#)
9. Xu G, *et al.* 2022. *Cell Death Dis.* 13:888. [PubMed](#)
10. Zhang Q, *et al.* 2013. *Clin Cancer Res.* 15:3176. [PubMed](#)
11. Aung A, *et al.* 2020. *Cancer Res.* 80:263. [PubMed](#)
12. Dai X, *et al.* 2021. *Bioact Mater.* 1.659027778. [PubMed](#)
13. Gelsomino L, *et al.* 2022. *Int J Mol Sci.* 23:. [PubMed](#)
14. Mansouri S, *et al.* 2020. *Mucosal Immunol.* 0.954861111. [PubMed](#)
15. Serhan J 2012. *Blood.* 120:e60. [PubMed](#)
16. Rodriguez-Perdigon M, *et al.* 2022. *Macromol Biosci.* 22:e2200168. [PubMed](#)
17. Herter S, *et al.* 2013. *Mol Cancer Ther.* 12:2031. [PubMed](#)
18. Krakow S, *et al.* 2019. *Front Immunol.* 10:1484. [PubMed](#)
19. Ball M, *et al.* 2016. *PLoS One.* 11: 0149600. [PubMed](#)
20. Wu JJ, *et al.* 2022. *Cell Death Dis.* 13:527. [PubMed](#)
21. Tyagi A, *et al.* 2021. *Nat Commun.* 12:474. [PubMed](#)
22. Winkler C, *et al.* 2021. *JCI Insight.* 6:. [PubMed](#)
23. Ronaghan NJ, *et al.* 2022. *PLoS One.* 17:e0276013. [PubMed](#)
24. Mifuji K, *et al.* 2017. *Bone Joint Res.* 10.1302/2046-3758.68.BJR-2016-0338.R1. [PubMed](#)

**RRID** AB\_571904 (BioLegend Cat. No. 321103)  
 AB\_571905 (BioLegend Cat. No. 321104)

## Antigen Details

---

<b>Structure</b>	Type I membrane protein, Pattern Recognition Receptor (PRR) family, C-type lectin superfamily, 162-175 kD
<b>Distribution</b>	Macrophages, dendritic cells, hepatic and lymphatic endothelial cells
<b>Function</b>	Pathogen binding, facilitate phagocytosis and endocytosis, macrophage activation and antigen presentation
<b>Ligand/Receptor</b>	Mannose, fucose, N-acetyl glucosamine
<b>Cell Type</b>	Dendritic cells, Endothelial cells, Macrophages
<b>Biology Area</b>	Cell Biology, Immunology, Neuroscience, Neuroscience Cell Markers
<b>Molecular Family</b>	CD Molecules
<b>Antigen References</b>	<ol style="list-style-type: none"> <li>1. Mason D, <i>et al.</i> Eds. 2002. <i>Leukocyte Typing VII.</i> Oxford University Press. p303</li> <li>2. Wileman TE, <i>et al.</i> 1986. <i>P. Natl. Acad. Sci. USA</i> 83:2501.</li> <li>3. Apostolopoulos V and McKenzie IF. 2001. <i>Curr. Mol. Med.</i> 1:469.</li> <li>4. Le Cabec V, <i>et al.</i> 2005. <i>J. Leukocyte Biol.</i> 77:934.</li> <li>5. Barrett-Bergshoeff M, <i>et al.</i> 1997. <i>Thromb. Haemostatis</i> 77:718.</li> </ol>
<b>Gene ID</b>	<a href="#">4360</a>

## Related Protocols

---

[Cell Surface Flow Cytometry Staining Protocol](#)

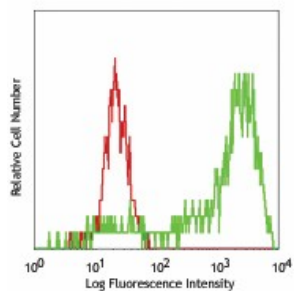
## Other Formats

---

Purified anti-human CD206 (MMR), FITC anti-human CD206 (MMR), PE anti-human CD206 (MMR), PE/Cyanine5 anti-human CD206 (MMR), APC anti-human CD206 (MMR), Alexa Fluor® 488 anti-human CD206 (MMR), Alexa Fluor® 647 anti-human CD206 (MMR), Biotin anti-human CD206 (MMR), APC/Cyanine7 anti-human CD206 (MMR), PerCP/Cyanine5.5 anti-human CD206 (MMR), PE/Cyanine7 anti-human CD206 (MMR), Brilliant Violet 421™ anti-human CD206 (MMR), Purified anti-human CD206 (MMR) (Maxpar® Ready), Alexa Fluor® 700 anti-human CD206 (MMR), PE/Dazzle™ 594 anti-human CD206 (MMR), APC/Fire™ 750 anti-human CD206 (MMR), Brilliant Violet 711™ anti-human CD206 (MMR), Brilliant Violet 510™ anti-human CD206 (MMR), Brilliant Violet 605™ anti-human CD206 (MMR), Brilliant Violet 785™ anti-human CD206 (MMR), TotalSeq™-A0205 anti-human CD206 (MMR), TotalSeq™-B0205 anti-human CD206 (MMR), TotalSeq™-C0205 anti-human CD206 (MMR), Ultra-LEAF™ Purified anti-human CD206 (MMR), Pacific Blue™ anti-human CD206 (MMR), PE/Fire™ 700 anti-human CD206 (MMR), TotalSeq™-D0205 anti-human CD206 (MMR)

## Product Data

---



GM-CSF stimulated (day3) human peripheral blood monocytes stained with 15-2 FITC

For research use only. Not for diagnostic use. Not for resale. BioLegend will not be held responsible for patent infringement or other violations that may occur with the use of our products.

\*These products may be covered by one or more Limited Use Label Licenses (see the BioLegend Catalog or our website, [www.biolegend.com/ordering#license](http://www.biolegend.com/ordering#license)). BioLegend products may not be transferred to third parties, resold, modified for resale, or used to manufacture commercial products, reverse engineer functionally similar materials, or to provide a service to third parties without written approval of BioLegend. By use of these products you accept the terms and conditions of all applicable Limited Use Label Licenses. Unless otherwise indicated, these products are for research use only and are not intended for human or animal diagnostic, therapeutic or commercial use.

BioLegend Inc., 8999 BioLegend Way, San Diego, CA 92121 [www.biolegend.com](http://www.biolegend.com)  
Toll-Free Phone: 1-877-Bio-Legend (246-5343) Phone: (858) 768-5800 Fax: (877) 455-9587