

FITC anti-human HLA-DR Antibody

Catalog# / Size	361603 / 25 tests 361604 / 100 tests
Clone	Tü36
Regulatory Status	RUO
Other Names	MHC class II, Major Histocompatibility complex II, human leukocyte antigen, HLA
Isotype	Mouse IgG2b, κ
Description	HLA-DR is a heterodimeric cell surface glycoprotein comprised of an α (heavy) chain and a β (light) chain. They are expressed on B cells, activated T cells, monocytes/macrophages, dendritic cells, and other non-professional APCs. In conjunction with the CD3/TCR complex and CD4 molecules, HLA-DR is critical for efficient peptide presentation to CD4+ T cells. Variations in the HLA gene expression are crucial to graft survival.

Product Details

Verified Reactivity	Human
Reported Reactivity	Baboon, Cynomolgus, Cat, Dog, Cow
Antibody Type	Monoclonal
Host Species	Mouse
Immunogen	Human PBL
Formulation	Phosphate-buffered solution, pH 7.2, containing 0.09% sodium azide and BSA (origin USA)
Preparation	The antibody was purified by affinity chromatography and conjugated with FITC under optimal conditions.
Concentration	Lot-specific (to obtain lot-specific concentration, please enter the lot number in our Concentration and Expiration Lookup or Certificate of Analysis online tools.)
Storage & Handling	The antibody solution should be stored undiluted between 2°C and 8°C, and protected from prolonged exposure to light. Do not freeze.
Application	FC - Quality tested
Recommended Usage	Each lot of this antibody is quality control tested by immunofluorescent staining with flow cytometric analysis . For flow cytometric staining, the suggested use of this reagent is 5 µl per million cells in 100 µl staining volume or 5 µl per 100 µl of whole blood.
Excitation Laser	Blue Laser (488 nm)
Application Notes	Additional reported applications (of relevant formats) includes Western blotting ⁴ , immunoprecipitation ⁴ , and <i>in vitro</i> blocking ⁵ . The LEAF™ purified antibody (Endotoxin <0.1 EU/µg, Azide-Free, 0.2 µm filtered) is recommended for functional assays (contact our custom solutions team).
Application References	<ol style="list-style-type: none"> 1. Pawelec G, <i>et al.</i> 1985. <i>Hum. Immunol.</i> 12:165. (FC) 2. Shaw S, <i>et al.</i> 1985. <i>Hum. Immunol.</i> 12:191. (FC) 3. Ziegler A, <i>et al.</i> 1986. <i>Immunobiology.</i> 171:77. (FC) 4. Cebulla CM, <i>et al.</i> 2002. <i>J. Immunol.</i> 169:167. (WB, FC, IP) 5. Khaw LT, <i>et al.</i> 2013. <i>PLOS One.</i> 8:e69521. (Block)
RRID	AB_2563164 (BioLegend Cat. No. 361603) AB_2563165 (BioLegend Cat. No. 361604)

Antigen Details

Structure	Ig superfamily, MHC class II, heterodimeric transmembrane protein
Distribution	B cells, activated T cells, monocytes/macrophages, dendritic cells, other APCs
Function	Antigen presentation
Ligand/Receptor	CD3/TCR, CD4
Cell Type	Antigen-presenting cells, B cells, Dendritic cells, Macrophages, Monocytes, T cells
Biology Area	Immunology, Innate Immunity
Molecular Family	MHC Antigens
Antigen References	<ol style="list-style-type: none">1. Thorsby E. 1974. <i>Transplant. Rev.</i> 18:51.2. Qvigstad E, <i>et al.</i> 1984. <i>Hum. Immunol.</i> 11:207.3. Serenius B, <i>et al.</i> 1984. <i>EMBO J.</i> 3:3209.4. Ottenhoff TH, <i>et al.</i> 1985. <i>Hum. Immunol.</i> 13:105.5. Strassmann G, <i>et al.</i> 1985. <i>Hum. Immunol.</i> 13:125.6. Trowsdale J, <i>et al.</i> 1985. <i>Immunol. Rev.</i> 85:5.
Gene ID	3122 3123 3113 3115

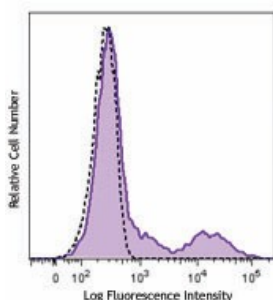
Related Protocols

[Cell Surface Flow Cytometry Staining Protocol](#)

Other Formats

Purified anti-human HLA-DR, PerCP/Cyanine5.5 anti-human HLA-DR, APC anti-human HLA-DR, FITC anti-human HLA-DR, PE anti-human HLA-DR, PE/Cyanine7 anti-human HLA-DR, APC/Fire™ 750 anti-human HLA-DR

Product Data



Human peripheral blood lymphocytes were stained with purified HLA-DR (clone Tü36) FITC (filled histogram) or mouse IgG2b, κ FITC isotype control (open histogram).

For research use only. Not for diagnostic use. Not for resale. BioLegend will not be held responsible for patent infringement or other violations that may occur with the use of our products.

*These products may be covered by one or more Limited Use Label Licenses (see the BioLegend Catalog or our website, www.biolegend.com/ordering#license). BioLegend products may not be transferred to third parties, resold, modified for resale, or used to manufacture commercial products, reverse engineer functionally similar materials, or to provide a service to third parties without written approval of BioLegend. By use of these products you accept the terms and conditions of all applicable Limited Use Label Licenses. Unless otherwise indicated, these products are for research use only and are not intended for human or animal diagnostic, therapeutic or commercial use.

BioLegend Inc., 8999 BioLegend Way, San Diego, CA 92121 www.biolegend.com
Toll-Free Phone: 1-877-Bio-Legend (246-5343) Phone: (858) 768-5800 Fax: (877) 455-9587

