

GluA1/2 Receptor Antibody Sampler Kit

Catalog# / Size	899907 / 1 kit
Regulatory Status	RUO
Other Names	Please refer to individual product datasheets.
Description	The GluA1/2 Receptor Antibody Sampler Kit offers flexibility for sampling and detection of AMPA receptor subunits GluA1 and GluA2, postsynaptic marker PSD95, and proteins involved in the regulation of AMPA receptor content; PICK1 and SynDIG1. These antibodies are highly suitable for WB and IHC applications.

Kit Contents

Kit Contents

Specificity	Format	Clone	Size	Reactivity	Isotype
Anti-PSD95	Purified	K28/74	25 µl	Human, Mouse, Rat	Mouse IgG1
Anti-GluR2	Purified	L21/32	25 µl	Human, Mouse, Rat	Mouse IgG1
Anti-GluR1	Purified	N355/1	25 µl	Mouse, Rat	Mouse IgG1
Anti-PICK1	Purified	L20/8	25 µl	Human, Mouse, Rat	Mouse IgG2a
Anti-SynDIG1	Purified	L42/17	25 µg	Human, Mouse, Rat	Mouse IgG2a, κ

* For detailed information about each specificity, please refer to the datasheets of the individual products.

Product Details

Formulation	Please refer to individual product datasheets of the purified formats for details.
Preparation	All antibodies in this kit were purified by affinity chromatography.
Storage & Handling	Upon receipt, store undiluted at 2-8°C.
Application	WB, IHC-P - Quality tested
Recommended Usage	<p>Each lot of antibodies in this kit is quality control tested by Western blotting. For Western blotting, the suggested uses of these reagents are as follows:</p> <p>Anti-PSD95: 0.1 - 5.0 µg/ml Anti-GluR1: 2.0 - 10 µg/ml Anti-PICK1: 1.0 - 5.0 µg/ml Anti-SynDIG1: 1.0 - 5.0 µg/ml</p> <p>For immunohistochemistry on formalin-fixed paraffin-embedded tissue, the suggested uses of these reagents are as follows:</p> <p>Anti-PSD95: 2.0 - 10 µg/ml Anti-GluR2: 1.0 - 10 µg/ml</p> <p>It is recommended that the reagent be titrated for optimal performance for each application.</p>
Application Notes	For verified or reported applications for these antibodies, please see individual product

datasheets.

Antigen Details

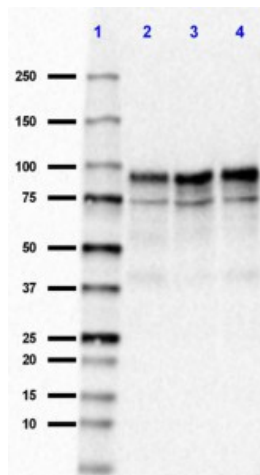
Biology Area	Cell Biology, Neuroscience, Synaptic Biology
Molecular Family	Postsynaptic proteins
Antigen References	Please refer to individual product data sheets for antigen references.
Gene ID	50592 29627 1742 84591 79953

Related Protocols

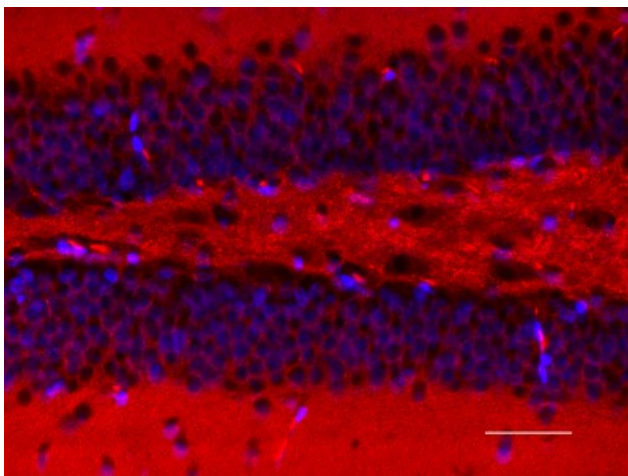
[Western Blotting Protocol](#)

[Immunohistochemistry Protocol for Paraffin-Embedded Sections](#)

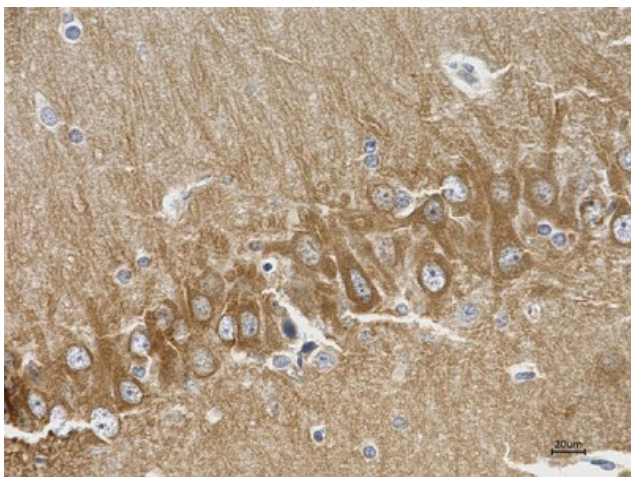
Product Data



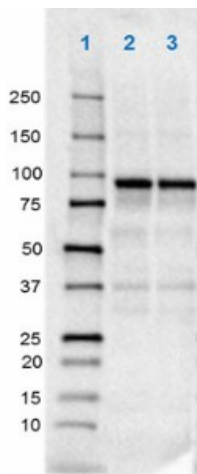
Western blot of purified anti-PSD95 antibody (clone K28/74). Lane 1: Molecular weight marker; Lane 2: 10 μ g of human brain membrane lysate; Lane 3: 10 μ g of mouse brain membrane lysate; Lane 4: 10 μ g of rat brain membrane lysate. The blot was incubated with 0.5 μ g/mL of the primary antibody overnight at 4°C, followed by incubation with HRP labeled goat anti-mouse IgG (Cat. No. 405301). Enhanced chemiluminescence was used as the detection system.



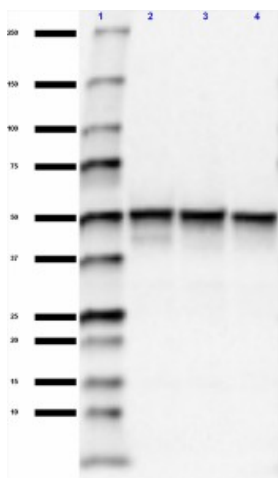
IHC staining of purified anti-PSD95 antibody (clone K28/74) on formalin-fixed paraffin-embedded mouse hippocampus tissue. Following antigen retrieval using Sodium Citrate H.I.E.R (Cat. No.928602), the tissue was incubated with 10 μ g/mL of the primary antibody overnight at 4°C, followed by incubation with Alexa Fluor® 555 anti-mouse IgG for one hour at room temperature. Nuclei were counterstained with DAPI. The image was captured with a 40X objective. Scale bar: 50



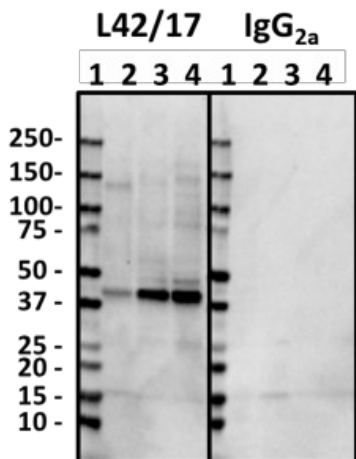
IHC staining of anti-GluR2 antibody (clone L21/32) on formalin-fixed paraffin-embedded rat brain tissue. Following antigen retrieval using Sodium Citrate H.I.E.R (Cat# 928602), the tissue was incubated with 10 μg/ml of the primary antibody for 60 minutes at room temperature. BioLegend's Ultra Streptavidin (USA) HRP Detection Kit (Multi-Species, DAB, Cat. No. 929901) was used for detection followed by hematoxylin counterstaining, according to the protocol provided. The image was captured with a 40X objective. Scale Bar: 20 μm



Western blot of purified anti-GluR1 antibody (clone N355/1). Lane 1: Molecular weight marker; Lane 2: 20 μg of mouse brain membrane lysate; Lane 3: 20 μg of rat brain membrane lysate. The blot was incubated with 10 μg/mL of the primary antibody overnight at 4°C, followed by incubation with HRP labeled goat anti-mouse IgG (Cat. No. 405306). Enhanced chemiluminescence was used as the detection system.



Western blot of purified anti-PICK1 antibody (clone L20/8). Lane 1: Molecular weight marker; Lane 2: 20 μg of human brain membrane lysate; Lane 3: 20 μg of mouse brain membrane lysate; Lane 4: 20 μg of rat brain membrane lysate. The blot was incubated with 1 μg/mL of the primary antibody overnight at 4°C, followed by incubation with HRP labeled goat anti-mouse IgG (Cat. No. 405301). Enhanced chemiluminescence was used as the detection system.



Western blot of anti-SynDIG1 antibody (clone L42/17). Lane 1: Molecular weight marker; Lane 2: 20 μg of human frontal cortex lysate; Lane 3: 20 μg of mouse brain lysate; Lane 4: 20 μg of rat brain lysate. The blots were incubated with 5 μg/mL of L42/17 or mouse IgG2a, κ overnight at 4°C, followed by incubation with HRP-labeled goat anti-mouse IgG (Cat. No. 405301). Enhanced chemiluminescence was used as the detection system.

For research use only. Not for diagnostic use. Not for resale. BioLegend will not be held responsible for patent infringement or other violations that may occur with the use of our products.

*These products may be covered by one or more Limited Use Label Licenses (see the BioLegend Catalog or our website, www.biolegend.com/ordering#license). BioLegend products may not be transferred to third parties, resold, modified for resale, or used to manufacture commercial products, reverse engineer functionally similar materials, or to provide a service to third parties without written approval of BioLegend. By use of these products you accept the terms and conditions of all applicable Limited Use Label Licenses. Unless otherwise indicated, these products are for research use only and are not intended for human or animal diagnostic, therapeutic or commercial use.

BioLegend Inc., 8999 BioLegend Way, San Diego, CA 92121 www.biolegend.com
Toll-Free Phone: 1-877-Bio-Legend (246-5343) Phone: (858) 768-5800 Fax: (877) 455-9587