

## Pacific Blue™ anti-human CD14 Antibody

<b>Catalog# / Size</b>	367121 / 25 tests 367122 / 100 tests
<b>Clone</b>	63D3
<b>Regulatory Status</b>	RUO
<b>Other Names</b>	Monocyte differentiation antigen CD14, myeloid cell-specific leucine-rich glycoprotein, LPS receptor
<b>Isotype</b>	Mouse IgG1, κ
<b>Description</b>	CD14 is a 53-55 kD glycosylphosphatidylinositol (GPI)-linked membrane glycoprotein that is also known as the LPS receptor. CD14 is expressed at high levels on monocytes and macrophages, and at lower levels on granulocytes. Some dendritic cell populations such as interfollicular dendritic cells, reticular dendritic cells, and Langerhans cells have also been reported to express CD14. As a high-affinity receptor for LPS, CD14 is involved in the clearance of gram-negative pathogens and in the upregulation of adhesion molecules and cytokine expression in monocytes and neutrophils.

### Product Details

---

<b>Verified Reactivity</b>	Human
<b>Antibody Type</b>	Monoclonal
<b>Host Species</b>	Mouse
<b>Immunogen</b>	Purified human peripheral blood monocytes.
<b>Formulation</b>	Phosphate-buffered solution, pH 7.2, containing 0.09% sodium azide and BSA (origin USA)
<b>Preparation</b>	The antibody was purified by affinity chromatography and conjugated with Pacific Blue™ under optimal conditions.
<b>Concentration</b>	Lot-specific (to obtain lot-specific concentration, please enter the lot number in our <a href="#">Concentration and Expiration Lookup</a> or <a href="#">Certificate of Analysis</a> online tools.)
<b>Storage &amp; Handling</b>	The antibody solution should be stored undiluted between 2°C and 8°C, and protected from prolonged exposure to light. <b>Do not freeze.</b>
<b>Application</b>	<a href="#">FC - Quality tested</a>
<b>Recommended Usage</b>	<p>Each lot of this antibody is quality control tested by <a href="#">immunofluorescent staining with flow cytometric analysis</a>. For flow cytometric staining, the suggested use of this reagent is 5 µl per million cells in 100 µl staining volume or 5 µl per 100 µl of whole blood.</p> <p>* Pacific Blue™ has a maximum emission of 455 nm when it is excited at 405 nm. Prior to using Pacific Blue™ conjugate for flow cytometric analysis, please verify your flow cytometer's capability of exciting and detecting the fluorochrome.</p> <p>Alexa Fluor® and Pacific Blue™ are trademarks of Life Technologies Corporation.</p> <p><a href="#">View full statement regarding label licenses</a></p>
<b>Excitation Laser</b>	Violet Laser (405 nm)
<b>Application References</b> (PubMed link indicates BioLegend citation)	<ol style="list-style-type: none"><li>1. Fridlender ZG, <i>et al.</i> 1999. <i>Hum. Immunol.</i> 11:1028.</li><li>2. Devitt A, <i>et al.</i> 1998. <i>Nature</i> 6675:505.</li></ol>
<b>Product Citations</b>	<ol style="list-style-type: none"><li>1. Jones N, <i>et al.</i> 2021. <i>Nat Commun.</i> 12:1209. <a href="#">PubMed</a></li><li>2. M?czy?ska J, <i>et al.</i> 2020. <i>Cell Death Dis.</i> 1.073611111. <a href="#">PubMed</a></li><li>3. Waight JD, <i>et al.</i> 2018. <i>Cancer Cell.</i> 33:1033. <a href="#">PubMed</a></li></ol>

RRID AB\_2687384 (BioLegend Cat. No. 367121)  
AB\_2687385 (BioLegend Cat. No. 367122)

## Antigen Details

<b>Structure</b>	GPI-linked membrane glycoprotein.
<b>Distribution</b>	Monocytes, macrophages, dendritic cells, and granulocytes.
<b>Function</b>	LPS receptor, clearance of Gram-negative pathogens.
<b>Interaction</b>	LPS.
<b>Ligand/Receptor</b>	LPS.
<b>Cell Type</b>	Dendritic cells, Granulocytes, Macrophages, Monocytes, Neutrophils
<b>Biology Area</b>	Cell Biology, Immunology, Neuroinflammation, Neuroscience
<b>Molecular Family</b>	Adhesion Molecules, CD Molecules
<b>Antigen References</b>	<ol style="list-style-type: none"><li>1. Stocks SC, <i>et al.</i> 1990. <i>Biochem. J.</i> 268:275.</li><li>2. Wright SD, <i>et al.</i> 1990. <i>Science</i> 4975:1431.</li></ol>
<b>Gene ID</b>	<a href="#">929</a>

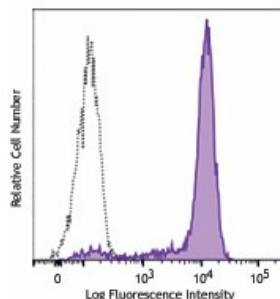
## Related Protocols

[Cell Surface Flow Cytometry Staining Protocol](#)

## Other Formats

Purified anti-human CD14, PE anti-human CD14, Biotin anti-human CD14, APC/Cyanine7 anti-human CD14, PE/Cyanine7 anti-human CD14, PerCP/Cyanine5.5 anti-human CD14, Alexa Fluor® 700 anti-human CD14, APC anti-human CD14, FITC anti-human CD14, APC/Fire™ 750 anti-human CD14, Pacific Blue™ anti-human CD14, Brilliant Violet 510™ anti-human CD14, Brilliant Violet 605™ anti-human CD14, Alexa Fluor® 647 anti-human CD14, Alexa Fluor® 488 anti-human CD14, TotalSeq™-A0051 anti-human CD14, PE/Dazzle™ 594 anti-human CD14, Brilliant Violet 750™ anti-human CD14, TotalSeq™-C0051 anti-human CD14, Brilliant Violet 421™ anti-human CD14, Brilliant Violet 785™ anti-human CD14, Brilliant Violet 711™ anti-human CD14, TotalSeq™-B0051 anti-human CD14, Spark Blue™ 550 anti-human CD14, Spark NIR™ 685 anti-human CD14, PE/Fire™ 640 anti-human CD14, APC/Fire™ 810 anti-human CD14, PerCP anti-human CD14, PE/Fire™ 700 anti-human CD14

## Product Data



Human peripheral blood monocytes were stained with Pacific Blue™ anti-human CD14 (clone 63D3) (filled histogram) or Pacific Blue™ mouse IgG1, κ isotype control (open histogram).

For research use only. Not for diagnostic use. Not for resale. BioLegend will not be held responsible for patent infringement or other violations that may occur with the use of our products.

\*These products may be covered by one or more Limited Use Label Licenses (see the BioLegend Catalog or our website, [www.biolegend.com/ordering#license](http://www.biolegend.com/ordering#license)). BioLegend products may not be transferred to third parties, resold, modified for resale, or used to manufacture commercial products, reverse engineer functionally

similar materials, or to provide a service to third parties without written approval of BioLegend. By use of these products you accept the terms and conditions of all applicable Limited Use Label Licenses. Unless otherwise indicated, these products are for research use only and are not intended for human or animal diagnostic, therapeutic or commercial use.

BioLegend Inc., 8999 BioLegend Way, San Diego, CA 92121 [www.biolegend.com](http://www.biolegend.com)  
Toll-Free Phone: 1-877-Bio-Legend (246-5343) Phone: (858) 768-5800 Fax: (877) 455-9587