

## PE anti-human FcεRIα Recombinant Antibody

<b>Catalog# / Size</b>	365303 / 25 tests
<b>Clone</b>	QA20A04
<b>Regulatory Status</b>	RUO
<b>Other Names</b>	FcεRIa, FcεRI-a, FcεRI-alpha, FcεRI alpha, high affinity IgE receptor
<b>Isotype</b>	Mouse IgG1, κ
<b>Description</b>	High affinity IgE receptor (FcεRI) plays a key role in IgE-mediated allergic immune response. FcεRI is a tetrameric receptor complex, which is composed of one α-subunit (FcεRIα), one β-subunit, and two γ-subunits. FcεRIα directly binds IgE with high affinity, while the β- and γ-chains are responsible for mediating intracellular signals. FcεRIα is a 50 kD transmembrane protein with Ig superfamily structure. It is primarily found on mast cells and basophils. Further studies have indicated that FcεRIα is also expressed on many inflammatory cells including cutaneous Langerhans cells, dendritic cells, monocytes of patients with allergic disorders, platelets, bronchial epithelial cells, eosinophils produced in hypereosinophilic syndrome, and neutrophils from allergy-induced asthma patients.

### Product Details

---

<b>Verified Reactivity</b>	Human
<b>Antibody Type</b>	Recombinant
<b>Host Species</b>	Mouse
<b>Formulation</b>	Phosphate-buffered solution, pH 7.2, containing 0.09% sodium azide and BSA (origin USA)
<b>Preparation</b>	The antibody was purified by affinity chromatography and conjugated with PE under optimal conditions.
<b>Concentration</b>	Lot-specific (to obtain lot-specific concentration, please enter the lot number in our <a href="#">Concentration and Expiration Lookup</a> or <a href="#">Certificate of Analysis</a> online tools.)
<b>Storage &amp; Handling</b>	The antibody solution should be stored undiluted between 2°C and 8°C, and protected from prolonged exposure to light. <b>Do not freeze.</b>
<b>Application</b>	<a href="#">FC - Quality tested</a>
<b>Recommended Usage</b>	Each lot of this antibody is quality control tested by <a href="#">immunofluorescent staining with flow cytometric analysis</a> . For flow cytometric staining, the suggested use of this reagent is 5 μL per million cells in 100 μL staining volume or 5 μL per 100 μL of whole blood. It is recommended that the reagent be titrated for optimal performance for each application.
<b>Excitation Laser</b>	Blue Laser (488 nm) Green Laser (532 nm)/Yellow-Green Laser (561 nm)
<b>RRID</b>	AB_2892444 (BioLegend Cat. No. 365303)

### Antigen Details

---

<b>Structure</b>	Ig superfamily, 50 kD
<b>Distribution</b>	Mast cells, basophils, cutaneous Langerhans cells, dendritic cells, and monocytes from the patients with allergic disorders, platelets, bronchial epithelial cells, eosinophils from hypereosinophilic syndrome, neutrophils from allergic asthmatic patients
<b>Function</b>	Bind IgE, trigger IgE-mediated allergic response
<b>Ligand/Receptor</b>	IgE

## Antigen References

1. Khodoun M, et al. 2020. *J Allergy Clin Immunol*. 2020.10.045.
2. Garman S, et al. 2000. *Nature*. 406:259–266.

## Gene ID

[2205](#)

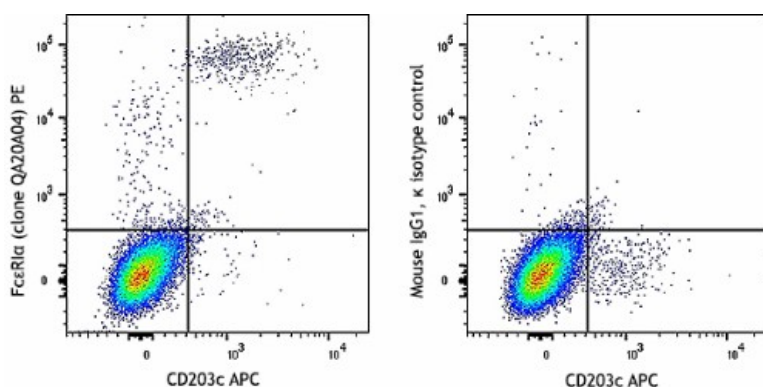
## Related Protocols

[Cell Surface Flow Cytometry Staining Protocol](#)

## Other Formats

PE anti-human FcεR1α Recombinant Antibody, Purified anti-human FcεR1α Recombinant Antibody

## Product Data



Human peripheral blood lymphocytes were stained with CD203c APC and anti-human FcεR1α recombinant (clone QA20A04) PE (left) or Mouse IgG1, κ PE isotype control (right).

For research use only. Not for diagnostic use. Not for resale. BioLegend will not be held responsible for patent infringement or other violations that may occur with the use of our products.

\*These products may be covered by one or more Limited Use Label Licenses (see the BioLegend Catalog or our website, [www.biolegend.com/ordering#license](http://www.biolegend.com/ordering#license)). BioLegend products may not be transferred to third parties, resold, modified for resale, or used to manufacture commercial products, reverse engineer functionally similar materials, or to provide a service to third parties without written approval of BioLegend. By use of these products you accept the terms and conditions of all applicable Limited Use Label Licenses. Unless otherwise indicated, these products are for research use only and are not intended for human or animal diagnostic, therapeutic or commercial use.

BioLegend Inc., 8999 BioLegend Way, San Diego, CA 92121 [www.biolegend.com](http://www.biolegend.com)  
Toll-Free Phone: 1-877-Bio-Legend (246-5343) Phone: (858) 768-5800 Fax: (877) 455-9587