

## PE anti-mouse CD115 (CSF-1R) Antibody

<b>Catalog# / Size</b>	165203 / 25 µg
<b>Clone</b>	W19330E
<b>Regulatory Status</b>	RUO
<b>Other Names</b>	CSF-1R, M-CSR, c-fms
<b>Isotype</b>	Rat IgG2a, κ
<b>Description</b>	CSF-1R, also known as CD115 and M-CSFR, is a single-pass type I membrane protein and member of the platelet-derived growth factor receptor family. This c-fms (Fms proto-oncogene) gene product's natural ligands include M-CSF and IL-34. Structural studies of CD115 have described an Ig-like extracellular domain, a transmembrane domain, an intracellular juxtamembrane domain, a split tyrosine kinase domain, and a C-terminal tail receptor. Receptor activation induces homodimerization in addition to phosphorylation and ubiquitination of intracellular residues. CD115 directly influences tissue macrophage and osteoclast differentiation and proliferation. It is expressed on monocytes/macrophages, peritoneal exudate cells, plasmacytoid and conventional dendritic cells, and osteoclasts.

### Product Details

---

<b>Verified Reactivity</b>	Mouse
<b>Antibody Type</b>	Monoclonal
<b>Host Species</b>	Rat
<b>Immunogen</b>	Mouse CD115 transfected cells
<b>Formulation</b>	Phosphate-buffered solution, pH 7.2, containing 0.09% sodium azide
<b>Preparation</b>	The antibody was purified by affinity chromatography and conjugated with PE under optimal conditions.
<b>Concentration</b>	0.2 mg/mL
<b>Storage &amp; Handling</b>	The antibody solution should be stored undiluted between 2°C and 8°C, and protected from prolonged exposure to light. <b>Do not freeze.</b>
<b>Application</b>	<a href="#">FC - Quality tested</a>
<b>Recommended Usage</b>	Each lot of this antibody is quality control tested by <a href="#">immunofluorescent staining with flow cytometric analysis</a> . For flow cytometric staining, the suggested use of this reagent is ≤ 0.25 µg per million cells in 100 µL volume. It is recommended that the reagent be titrated for optimal performance for each application.
<b>Excitation Laser</b>	Blue Laser (488 nm) Green Laser (532 nm)/Yellow-Green Laser (561 nm)
<b>Application Notes</b>	Clone W19330E does not affect binding of clone W19330C on target cells.  Clone W19330E can block clone AFS98 binding on target cells.  Clone W19330E can block ligand binding to CSFR-1.
<b>RRID</b>	AB_2910352 (BioLegend Cat. No. 165203)

### Antigen Details

---

<b>Structure</b>	Ig superfamily, 145 kD
<b>Distribution</b>	Monocytes/macrophages, peritoneal exudate cells, plasmacytoid and conventional dendritic cells,

	osteoclasts
<b>Function</b>	Growth factor receptor, tyrosine kinase
<b>Ligand/Receptor</b>	Macrophage colony stimulating factor (M-CSF), IL-34
<b>Cell Type</b>	Dendritic cells, Macrophages, Monocytes, Osteoclasts
<b>Biology Area</b>	Cell Biology, Immunology, Stem Cells
<b>Molecular Family</b>	Cytokine/Chemokine Receptors
<b>Antigen References</b>	<ol style="list-style-type: none"> <li>1. Guilbert LJ and Stanley ER. 1980. <i>J Cell Bio.</i> 85:153-9.</li> <li>2. Yeung Y-G, <i>et al.</i> 1978. <i>Proc Natl Acad Sci.</i> 84:1268-71.</li> <li>3. Sherr CJ, <i>et al.</i> 1985. <i>Cell.</i> 41:665-76.</li> </ol>
<b>Gene ID</b>	<a href="#">12978</a>

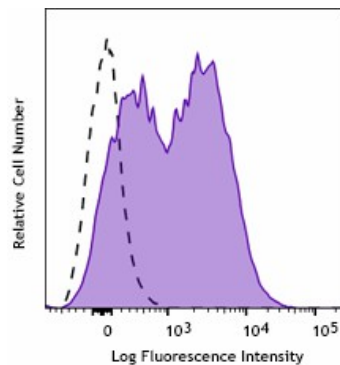
## Related Protocols

[Cell Surface Flow Cytometry Staining Protocol](#)

## Other Formats

Purified anti-mouse CD115 (CSF-1R), PE anti-mouse CD115 (CSF-1R)

## Product Data



Thioglycolate-elicited BALB/c mouse peritoneal macrophages were stained with PE anti-mouse CD115 (clone W19330E) (filled histogram) or rat IgG2a,  $\kappa$  PE isotype control (open histogram).

For research use only. Not for diagnostic use. Not for resale. BioLegend will not be held responsible for patent infringement or other violations that may occur with the use of our products.

\*These products may be covered by one or more Limited Use Label Licenses (see the BioLegend Catalog or our website, [www.biolegend.com/ordering#license](http://www.biolegend.com/ordering#license)). BioLegend products may not be transferred to third parties, resold, modified for resale, or used to manufacture commercial products, reverse engineer functionally similar materials, or to provide a service to third parties without written approval of BioLegend. By use of these products you accept the terms and conditions of all applicable Limited Use Label Licenses. Unless otherwise indicated, these products are for research use only and are not intended for human or animal diagnostic, therapeutic or commercial use.

BioLegend Inc., 8999 BioLegend Way, San Diego, CA 92121 [www.biolegend.com](http://www.biolegend.com)  
Toll-Free Phone: 1-877-Bio-Legend (246-5343) Phone: (858) 768-5800 Fax: (877) 455-9587