

PE/Dazzle™ 594 anti-DYKDDDDK Tag Antibody

Catalog# / Size	637329 / 25 µg 637330 / 100 µg
Clone	L5
Regulatory Status	RUO
Other Names	FLAG tag
Isotype	Rat IgG2a, λ
Description	The DYKDDDDK tag, commonly referred to as Sigma®'s FLAG® Tag, is often used as a protein modification in order to simplify the labeling and detection of proteins. This unique amino acid sequence allows for specific antibody detection in western blotting, immunoprecipitation, and immunostaining techniques. Due to the short sequence, this modification is not likely to affect the structure or function of the modified proteins.

Product Details

Verified Reactivity	DYKDDDDK tag epitope
Antibody Type	Monoclonal
Host Species	Rat
Immunogen	DYKDDDDK-tagged mouse Langerin
Formulation	Phosphate-buffered solution, pH 7.2, containing 0.09% sodium azide
Preparation	The antibody was purified by affinity chromatography and conjugated with PE/Dazzle™ 594 under optimal conditions.
Concentration	0.2 mg/mL
Storage & Handling	The antibody solution should be stored undiluted between 2°C and 8°C, and protected from prolonged exposure to light. Do not freeze.
Application	FC - Quality tested
Recommended Usage	Each lot of this antibody is quality control tested by immunofluorescent staining with flow cytometric analysis. For flow cytometric staining, the suggested use of this reagent is ≤ 0.25 µg per million cells in 100 µL volume. It is recommended that the reagent be titrated for optimal performance for each application.
Excitation Laser	Blue Laser (488 nm) Green Laser (532 nm)/Yellow-Green Laser (561 nm)
Application Notes	The L5 clone has been demonstrated to have 2-8 fold better sensitivity in WB than another commonly used antibody clone, M2.
Application References	<ol style="list-style-type: none">1. Park SH, <i>et al.</i> 2008. <i>J Immunol Methods</i>. 331:27.2. Moon SH, <i>et al.</i> 2010. <i>J. Biol Chem</i>. 285:12935. PubMed3. Sasaki M, <i>et al.</i> 2011. <i>J. Biol Chem</i>. 286:39370. PubMed4. Sonder SU, <i>et al.</i> 2012. <i>J Immunol</i>. 188:5906. PubMed5. Jiang Y, <i>et al.</i> 2013. <i>Int Immunol</i>. 25:235. PubMed6. Zuo X, <i>et al.</i> 2014. <i>PLoS One</i>. 9:84748. PubMed7. Toyoo-Oak K, <i>et al.</i> 2014. <i>J Neurosci</i>. 34:12168. PubMed
(PubMed link indicates BioLegend citation)	
RRID	AB_2888801 (BioLegend Cat. No. 637329) AB_2888801 (BioLegend Cat. No. 637330)

Antigen Details

Biology Area Cell Biology

Antigen References 1. Einhauer A. 2001. *J. Biochem. Biophys. Methods.* 49:455.
2. Knappik A and Pluckthun A. 1994. *Biotechniques.* 17:754.

Gene ID NA

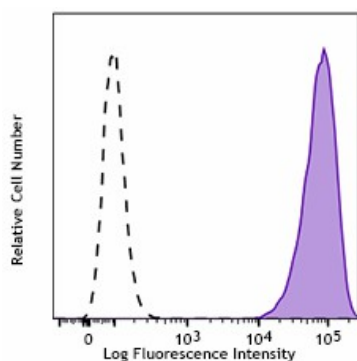
Related Protocols

[Cell Surface Flow Cytometry Staining Protocol](#)

Other Formats

Purified anti-DYKDDDDK Tag, Anti-DYKDDDDK Tag (L5) Affinity Gel, APC anti-DYKDDDDK Tag, PE anti-DYKDDDDK Tag, Direct-Blot™ HRP anti-DYKDDDDK Tag, Alexa Fluor® 594 anti-DYKDDDDK Tag, Alexa Fluor® 647 anti-DYKDDDDK Tag, Alexa Fluor® 488 anti-DYKDDDDK Tag, PE/Cyanine7 anti-DYKDDDDK Tag, Brilliant Violet 421™ anti-DYKDDDDK Tag, PerCP/Cyanine5.5 anti-DYKDDDDK Tag, Ultra-LEAF™ Purified anti-DYKDDDDK Tag, PE/Dazzle™ 594 anti-DYKDDDDK Tag Antibody, TotalSeq™-B1129 anti-DYKDDDDK Tag, TotalSeq™-A1129 anti-DYKDDDDK Tag, TotalSeq™-C1129 anti-DYKDDDDK Tag

Product Data



DYKDDDDK tag-transfected cells were stained with anti-DYKDDDDK (clone L5) PE/Dazzle™ 594 (filled histogram) or rat IgG2a PE/Dazzle™ 594 isotype control (open histogram).

For research use only. Not for diagnostic use. Not for resale. BioLegend will not be held responsible for patent infringement or other violations that may occur with the use of our products.

*These products may be covered by one or more Limited Use Label Licenses (see the BioLegend Catalog or our website, www.biolegend.com/ordering#license). BioLegend products may not be transferred to third parties, resold, modified for resale, or used to manufacture commercial products, reverse engineer functionally similar materials, or to provide a service to third parties without written approval of BioLegend. By use of these products you accept the terms and conditions of all applicable Limited Use Label Licenses. Unless otherwise indicated, these products are for research use only and are not intended for human or animal diagnostic, therapeutic or commercial use.

BioLegend Inc., 8999 BioLegend Way, San Diego, CA 92121 www.biolegend.com
Toll-Free Phone: 1-877-Bio-Legend (246-5343) Phone: (858) 768-5800 Fax: (877) 455-9587