

PE/Dazzle™ 594 anti-human CD56 (NCAM) Recombinant Antibody

Catalog# / Size	398809 / 25 tests 398810 / 100 tests
Clone	QA18A21
Regulatory Status	RUO
Other Names	Leu-19, NKH1
Isotype	Mouse IgG1, κ
Description	CD56 is a single transmembrane glycoprotein also known as NCAM (Neural Cell Adhesion Molecule), Leu-19, or NKH1. It is a member of the Ig superfamily. The 140 kD isoform is expressed on NK cells and NK-T cells. CD56 is also expressed in the brain (cerebellum and cortex) and at neuromuscular junctions. Certain large granular lymphocyte (LGL) leukemias, small-cell lung carcinomas, neuronal derived tumors, myelomas, and myeloid leukemias also express CD56. CD56 plays a role in homophilic and heterophilic adhesion via binding to itself or heparin sulfate.

Product Details

Verified Reactivity	Human
Antibody Type	Recombinant
Host Species	Mouse
Formulation	Phosphate-buffered solution, pH 7.2, containing 0.09% sodium azide and BSA (origin USA)
Preparation	The antibody was purified by affinity chromatography and conjugated with PE/Dazzle™ 594 under optimal conditions.
Concentration	Lot-specific (to obtain lot-specific concentration, please enter the lot number in our Concentration and Expiration Lookup or Certificate of Analysis online tools.)
Storage & Handling	The antibody solution should be stored undiluted between 2°C and 8°C, and protected from prolonged exposure to light. Do not freeze.
Application	FC - Quality tested
Recommended Usage	Each lot of this antibody is quality control tested by immunofluorescent staining with flow cytometric analysis . For flow cytometric staining, the suggested use of this reagent is 5 µL per million cells in 100 µL staining volume or 5 µL per 100 µL of whole blood. It is recommended that the reagent be titrated for optimal performance for each application. * PE/Dazzle™ 594 has a maximum excitation of 566 nm and a maximum emission of 610 nm.
Excitation Laser	Blue Laser (488 nm) Green Laser (532 nm)/Yellow-Green Laser (561 nm)
RRID	AB_2894511 (BioLegend Cat. No. 398809) AB_2894511 (BioLegend Cat. No. 398810)

Antigen Details

Structure	Ig superfamily, single transmembrane or GPI-anchored glycoprotein
Distribution	NK cells, T subset, neural tissue, some LGL and myeloid leukemias
Function	Adhesion
Ligand/Receptor	Heparin sulfate

Cell Type	B cells, Leukemia, Mesenchymal Stem Cells, Neurons, T cells
Biology Area	Cell Adhesion, Cell Biology, Costimulatory Molecules, Immunology, Innate Immunity, Neuroscience, Stem Cells, Synaptic Biology
Molecular Family	Adhesion Molecules, CD Molecules
Antigen References	<ol style="list-style-type: none"> 1. Rosental B, <i>et al.</i> 2011. <i>J Immunol.</i> 187:5693. PubMed 2. Correia DV, <i>et al.</i> 2011. <i>Blood.</i> 118:992. PubMed 3. Schlecker E, <i>et al.</i> 2014. <i>Cancer Res.</i> 74:3429. PubMed 4. Snyder JM, <i>et al.</i> 2014. <i>PLoS One.</i> 9:e107257. PubMed 5. Siebert N, <i>et al.</i> 2014. <i>PLoS One.</i> 9:e107692. PubMed 6. Rider P, <i>et al.</i> 2015. <i>J Immunol.</i> 195:1705-12. PubMed 7. Davis ZB, <i>et al.</i> 2011. <i>J Vis Exp.</i> 49: 2668. PubMed 8. Robin JD, <i>et al.</i> 2015. <i>J Vis Exp.</i> 95: 52307. PubMed 9. Ames E, <i>et al.</i> 2015. <i>J Immunol.</i> 195: 4010-9. PubMed 10. Laroni A, <i>et al.</i> 2016. <i>J Autoimmun.</i> 72:8-18. PubMed 11. Pachnio A, <i>et al.</i> 2016. <i>PLoS Pathog.</i> 12:e1005832. PubMed 12. Wouters K, <i>et al.</i> 2017. <i>Sci Rep.</i> 7:42665. PubMed
Gene ID	4684

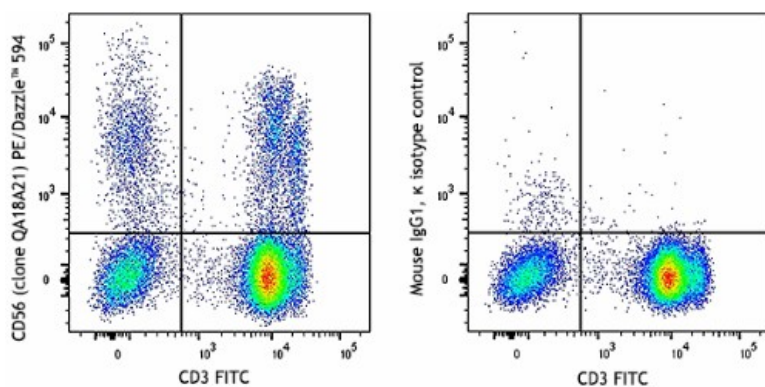
Related Protocols

[Cell Surface Flow Cytometry Staining Protocol](#)

Other Formats

PE anti-human CD56 (NCAM) Recombinant Antibody, Purified anti-human CD56 (NCAM) Recombinant Antibody, APC anti-human CD56 (NCAM) Recombinant Antibody, PE/Dazzle™ 594 anti-human CD56 (NCAM) Recombinant Antibody, PerCP/Cyanine5.5 anti-human CD56 (NCAM) Recombinant Antibody, PE/Cyanine7 anti-human CD56 (NCAM) Recombinant Antibody

Product Data



Human peripheral blood lymphocytes were stained with anti-human CD3 FITC and anti-human CD56 recombinant (clone QA18A21) PE/Dazzle™ 594 (left) or mouse IgG1, κ PE/Dazzle™ 594 isotype control (right).

For research use only. Not for diagnostic use. Not for resale. BioLegend will not be held responsible for patent infringement or other violations that may occur with the use of our products.

*These products may be covered by one or more Limited Use Label Licenses (see the BioLegend Catalog or our website, www.biolegend.com/ordering#license). BioLegend products may not be transferred to third parties, resold, modified for resale, or used to manufacture commercial products, reverse engineer functionally similar materials, or to provide a service to third parties without written approval of BioLegend. By use of these products you accept the terms and conditions of all applicable Limited Use Label Licenses. Unless otherwise indicated, these products are for research use only and are not intended for human or animal diagnostic, therapeutic or commercial use.

BioLegend Inc., 8999 BioLegend Way, San Diego, CA 92121 www.biolegend.com
Toll-Free Phone: 1-877-Bio-Legend (246-5343) Phone: (858) 768-5800 Fax: (877) 455-9587