

PE/Fire™ 640 anti-human CD366 (Tim-3) Antibody

Catalog# / Size	345061 / 25 tests 345062 / 100 tests
Clone	F38-2E2
Regulatory Status	RUO
Workshop	HCDM listed
Other Names	T cell immunoglobulin and mucin domain containing protein 3, hepatitis virus cellular receptor 2, CD366
Isotype	Mouse IgG1, κ
Description	CD366 (Tim-3) is a transmembrane protein also known as T cell immunoglobulin and mucin domain containing protein-3. Tim-3 is expressed at high levels on activated T cells (preferentially on Th1 cells, monocytes/macrophages, and dendritic cells). Tim-3 has also been shown to exist as a soluble protein. Cells expressing Tim-3 are present at high levels in the CNS of animals at the onset of experimental autoimmune encephalomyelitis (EAE), a disease mediated by lymphocytes secreting Th1-like cytokines. Tim-3 has been proposed to inhibit Th1-mediated immune responses and promote immunological tolerance.

Product Details

Verified Reactivity	Human
Antibody Type	Monoclonal
Host Species	Mouse
Immunogen	Human Tim-3 fusion protein
Formulation	Phosphate-buffered solution, pH 7.2, containing 0.09% sodium azide and BSA (origin USA)
Preparation	The antibody was purified by affinity chromatography and conjugated with PE/Fire™ 640 under optimal conditions.
Concentration	Lot-specific (to obtain lot-specific concentration, please enter the lot number in our Concentration and Expiration Lookup or Certificate of Analysis online tools.)
Storage & Handling	The antibody solution should be stored undiluted between 2°C and 8°C, and protected from prolonged exposure to light. Do not freeze.
Application	FC - Quality tested
Recommended Usage	Each lot of this antibody is quality control tested by immunofluorescent staining with flow cytometric analysis . For flow cytometric staining, the suggested use of this reagent is 5 µL per million cells in 100 µL staining volume or 5 µL per 100 µL of whole blood. It is recommended that the reagent be titrated for optimal performance for each application. * PE/Fire™ 640 has a maximum excitation of 566 nm and a maximum emission of 639 nm.
Excitation Laser	Blue Laser (488 nm) Green Laser (532 nm)/Yellow-Green Laser (561 nm)
Application Notes	Additional reported applications (for relevant formats of this clone) include: costimulation ¹ (clone 2E2 has been shown to enhance T-cell receptor mediated activation and cytokine secretion) and blocking ^{2,3} .
Application References	1. Hastings WD, <i>et al.</i> 2009. <i>Eur. J. Immunol.</i> 39:2492. (Costim) 2. Jones RB, <i>et al.</i> 2008. <i>J. Exp. Med.</i> 205:2763. (Block) 3. Klibi J, <i>et al.</i> 2009. <i>Blood</i> 113:1957. (FC, Block)
(PubMed link indicates BioLegend citation)	
RRID	AB_2924545 (BioLegend Cat. No. 345061) AB_2924545 (BioLegend Cat. No. 345062)

Antigen Details

Structure	Transmembrane protein containing immunoglobulin domain and mucin-like domain; can exist as a soluble form lacking mucin and transmembrane domains
Distribution	Activated T cells, preferentially on Th1 cells, monocytes, dendritic cells
Function	Plays a role in regulating macrophage activation, T cell apoptosis and immune tolerance
Ligand/Receptor	Galectin-9
Cell Type	Dendritic cells, Monocytes, T cells, Th1, Tregs
Biology Area	Immunology, Inhibitory Molecules
Molecular Family	CD Molecules, Immune Checkpoint Receptors
Antigen References	1. Hafler DA and Kuchroo V. 2008. <i>J. Exp. Med.</i> 205:2699. 2. Zhu C, et al. 2005. <i>Nat. Immunol.</i> 6:1245. 3. Wang F, et al. 2009. <i>Immunobiology</i> 214:342.
Gene ID	84868

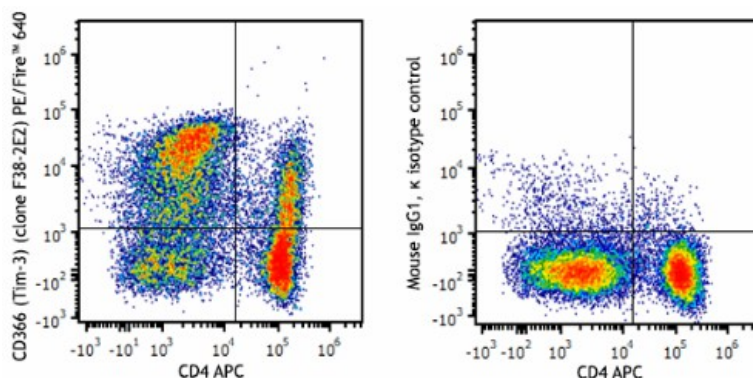
Related Protocols

[Cell Surface Flow Cytometry Staining Protocol](#)

Other Formats

Purified anti-human CD366 (Tim-3), PE anti-human CD366 (Tim-3), Brilliant Violet 421™ anti-human CD366 (Tim-3), Ultra-LEAF™ Purified anti-human CD366 (Tim-3), APC anti-human CD366 (Tim-3), PE/Cyanine7 anti-human CD366 (Tim-3), PerCP/Cyanine5.5 anti-human CD366 (Tim-3), Brilliant Violet 605™ anti-human CD366 (Tim-3), FITC anti-human CD366 (Tim-3), Purified anti-human CD366 (Tim-3) (Maxpar® Ready), Brilliant Violet 711™ anti-human CD366 (Tim-3), APC/Cyanine7 anti-human CD366 (Tim-3), Brilliant Violet 785™ anti-human CD366 (Tim-3), Brilliant Violet 650™ anti-human CD366 (Tim-3), Brilliant Violet 510™ anti-human CD366 (Tim-3), PE/Dazzle™ 594 anti-human CD366 (Tim-3), GolnVivo™ Purified anti-human CD366 (Tim-3), APC/Fire™ 750 anti-human CD366 (Tim-3), Pacific Blue™ anti-human CD366 (Tim-3), Biotin anti-human CD366 (Tim-3), TotalSeq™-A0169 anti-human CD366 (Tim-3), TotalSeq™-C0169 anti-human CD366 (Tim-3), PE/Cyanine5 anti-human CD366 (Tim-3), TotalSeq™-B0169 anti-human CD366 (Tim-3), Brilliant Violet 750™ anti-human CD366 (Tim-3) Antibody, TotalSeq™-D0169 anti-human CD366 (Tim-3), PE/Fire™ 810 anti-human CD366 (Tim-3), PE/Fire™ 640 anti-human CD366 (Tim-3)

Product Data



PHA-stimulated (3 days) human peripheral blood monocytes were stained with anti-human CD4 APC and anti-human CD366 (Tim-3) (clone F38-2E2) PE/Fire™ 640 (left) or mouse IgG1, κ PE/Fire™ 640 isotype control (right).

For research use only. Not for diagnostic use. Not for resale. BioLegend will not be held responsible for patent infringement or other violations that may occur with the use of our products.

*These products may be covered by one or more Limited Use Label Licenses (see the BioLegend Catalog or our website, www.biolegend.com/ordering#license). BioLegend products may not be transferred to third parties, resold, modified for resale, or used to manufacture commercial products, reverse engineer functionally

similar materials, or to provide a service to third parties without written approval of BioLegend. By use of these products you accept the terms and conditions of all applicable Limited Use Label Licenses. Unless otherwise indicated, these products are for research use only and are not intended for human or animal diagnostic, therapeutic or commercial use.

BioLegend Inc., 8999 BioLegend Way, San Diego, CA 92121 www.biolegend.com
Toll-Free Phone: 1-877-Bio-Legend (246-5343) Phone: (858) 768-5800 Fax: (877) 455-9587