

## Purified anti-human CD16 Recombinant Antibody

<b>Catalog# / Size</b>	325902 / 100 µg
<b>Clone</b>	QA18A13
<b>Regulatory Status</b>	RUO
<b>Other Names</b>	FcγRIII, Fc gamma receptor, Fc gamma receptor 3
<b>Isotype</b>	Mouse IgG1, κ
<b>Description</b>	CD16 is known as low affinity IgG receptor III (FcγRIII). It is expressed as two distinct forms (CD16a and CD16b). CD16a (FcγRIIIA) is a 50-65 kD polypeptide-anchored transmembrane protein. It is expressed on the surface of NK cells, activated monocytes, macrophages, and placental trophoblasts in humans. CD16b (FcγRIIIB) is a 48 kD glycosylphosphatidylinositol (GPI)-anchored protein. Its extracellular domain is over 95% homologous to that of CD16a, and it is expressed specifically on neutrophils. CD16 binds aggregated IgG or IgG-antigen complex which functions in NK cell activation, phagocytosis, and antibody-dependent cell-mediated cytotoxicity (ADCC).

### Product Details

---

<b>Verified Reactivity</b>	Human
<b>Antibody Type</b>	Recombinant
<b>Host Species</b>	Mouse
<b>Formulation</b>	Phosphate-buffered solution, pH 7.2, containing 0.09% sodium azide
<b>Preparation</b>	The antibody was purified by affinity chromatography.
<b>Concentration</b>	0.5 mg/mL
<b>Storage &amp; Handling</b>	The antibody solution should be stored undiluted between 2°C and 8°C.
<b>Application</b>	<a href="#">FC - Quality tested</a>
<b>Recommended Usage</b>	Each lot of this antibody is quality control tested by <a href="#">immunofluorescent staining with flow cytometric analysis</a> . For flow cytometric staining, the suggested use of this reagent is ≤ 1.0 µg per million cells in 100 µL volume. It is recommended that the reagent be titrated for optimal performance for each application.
<b>RRID</b>	AB_2892392 (BioLegend Cat. No. 325902)

### Antigen Details

---

<b>Structure</b>	Ig superfamily, transmembrane form (50-65 kD) or GPI-linked form (48 kD)
<b>Function</b>	Low affinity IgG Fc receptor, phagocytosis, ADCC
<b>Ligand/Receptor</b>	Aggregated IgG, IgG-antigen complex
<b>Antigen References</b>	1. Rataj, <i>et al.</i> 2019. <i>Br J Cancer</i> . 120:79-87.
<b>Gene ID</b>	<a href="#">2214</a>

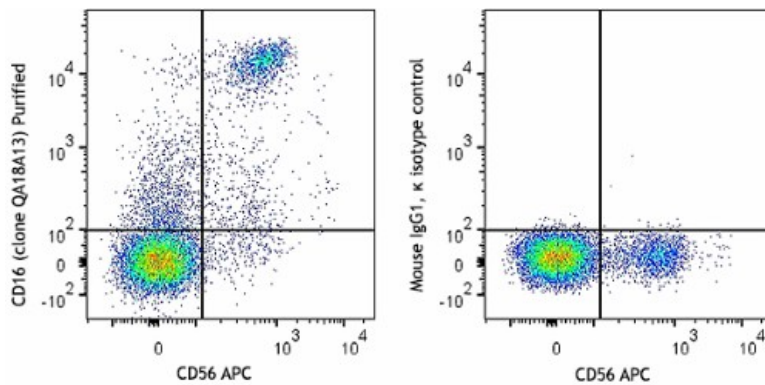
### Related Protocols

---

## Other Formats

Purified anti-human CD16 Recombinant Antibody, PE anti-human CD16 Recombinant Antibody

## Product Data



Human peripheral blood lymphocytes were stained with CD56 APC and CD16 recombinant (clone QA18A13) purified (left) or mouse IgG1, κ purified isotype control (right) followed by anti-mouse IgG PE secondary antibody.

For research use only. Not for diagnostic use. Not for resale. BioLegend will not be held responsible for patent infringement or other violations that may occur with the use of our products.

\*These products may be covered by one or more Limited Use Label Licenses (see the BioLegend Catalog or our website, [www.biolegend.com/ordering#license](http://www.biolegend.com/ordering#license)). BioLegend products may not be transferred to third parties, resold, modified for resale, or used to manufacture commercial products, reverse engineer functionally similar materials, or to provide a service to third parties without written approval of BioLegend. By use of these products you accept the terms and conditions of all applicable Limited Use Label Licenses. Unless otherwise indicated, these products are for research use only and are not intended for human or animal diagnostic, therapeutic or commercial use.

BioLegend Inc., 8999 BioLegend Way, San Diego, CA 92121 [www.biolegend.com](http://www.biolegend.com)  
Toll-Free Phone: 1-877-Bio-Legend (246-5343) Phone: (858) 768-5800 Fax: (877) 455-9587