

## Purified anti-human CD56 (NCAM) Recombinant Antibody

<b>Catalog# / Size</b>	398802 / 100 µg
<b>Clone</b>	QA18A21
<b>Regulatory Status</b>	RUO
<b>Other Names</b>	Leu-19, NKH1
<b>Isotype</b>	Mouse IgG1, κ
<b>Description</b>	CD56 is a single transmembrane glycoprotein also known as NCAM (Neural Cell Adhesion Molecule), Leu-19, or NKH1. It is a member of the Ig superfamily. The 140 kD isoform is expressed on NK cells and NK-T cells. CD56 is also expressed in the brain (cerebellum and cortex) and at neuromuscular junctions. Certain large granular lymphocyte (LGL) leukemias, small-cell lung carcinomas, neuronal derived tumors, myelomas, and myeloid leukemias also express CD56. CD56 plays a role in homophilic and heterophilic adhesion via binding to itself or heparin sulfate.

### Product Details

---

<b>Verified Reactivity</b>	Human
<b>Antibody Type</b>	Recombinant
<b>Host Species</b>	Mouse
<b>Formulation</b>	Phosphate-buffered solution, pH 7.2, containing 0.09% sodium azide
<b>Preparation</b>	The antibody was purified by affinity chromatography.
<b>Concentration</b>	0.5 mg/mL
<b>Storage &amp; Handling</b>	The antibody solution should be stored undiluted between 2°C and 8°C.
<b>Application</b>	<a href="#">FC - Quality tested</a>
<b>Recommended Usage</b>	Each lot of this antibody is quality control tested by <a href="#">immunofluorescent staining with flow cytometric analysis</a> . For flow cytometric staining, the suggested use of this reagent is ≤ 0.125 µg per million cells in 100 µL volume. It is recommended that the reagent be titrated for optimal performance for each application.
<b>RRID</b>	AB_2832780 (BioLegend Cat. No. 398802)

### Antigen Details

---

<b>Structure</b>	Ig superfamily, single transmembrane or GPI-anchored glycoprotein
<b>Distribution</b>	NK cells, T subset, neural tissue, some LGL and myeloid leukemias
<b>Function</b>	Adhesion
<b>Ligand/Receptor</b>	Heparin sulfate
<b>Cell Type</b>	B cells, Leukemia, Mesenchymal Stem Cells, Neurons, T cells
<b>Biology Area</b>	Cell Adhesion, Cell Biology, Costimulatory Molecules, Immunology, Innate Immunity, Neuroscience, Stem Cells, Synaptic Biology
<b>Molecular Family</b>	Adhesion Molecules, CD Molecules
<b>Antigen References</b>	<ol style="list-style-type: none"><li>1. Rosental B, <i>et al.</i> 2011. <i>J Immunol.</i> 187:5693. <a href="#">PubMed</a></li><li>2. Correia DV, <i>et al.</i> 2011. <i>Blood.</i> 118:992. <a href="#">PubMed</a></li></ol>

3. Schlecker E, et al. 2014. *Cancer Res.* 74:3429. [PubMed](#)
4. Snyder JM, et al. 2014. *PLoS One.* 9:e107257. [PubMed](#)
5. Siebert N, et al. 2014. *PLoS One.* 9:e107692. [PubMed](#)
6. Rider P, et al. 2015. *J Immunol.* 195:1705-12. [PubMed](#)
7. Davis ZB, et al. 2011. *J Vis Exp.* 49: 2668. [PubMed](#)
8. Robin JD, et al. 2015. *J Vis Exp.* 95: 52307. [PubMed](#)
9. Ames E, et al. 2015. *J Immunol.* 195: 4010-9. [PubMed](#)
10. Laroni A, et al. 2016. *J Autoimmun.* 72:8-18. [PubMed](#)
11. Pachnio A, et al. 2016. *PLoS Pathog.* 12:e1005832. [PubMed](#)
12. Wouters K, et al. 2017. *Sci Rep.* 7:42665. [PubMed](#)

Gene ID [4684](#)

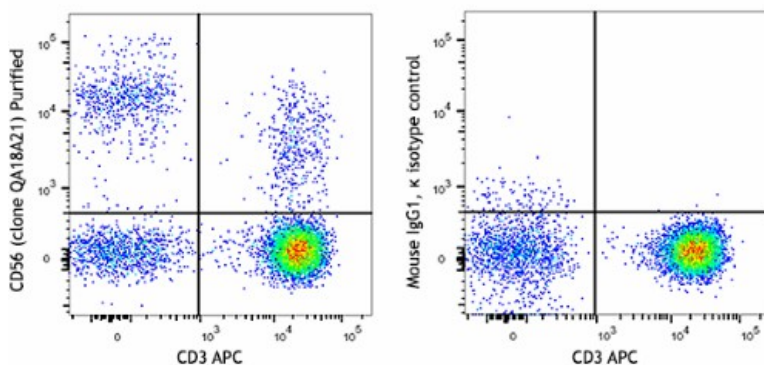
## Related Protocols

[Cell Surface Flow Cytometry Staining Protocol](#)

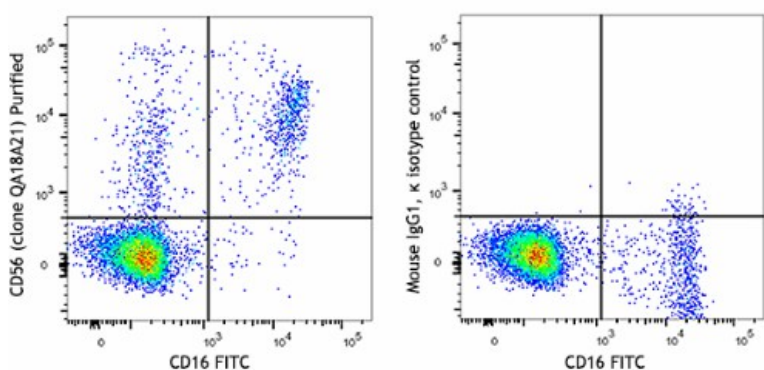
## Other Formats

PE anti-human CD56 (NCAM) Recombinant Antibody, Purified anti-human CD56 (NCAM) Recombinant Antibody, APC anti-human CD56 (NCAM) Recombinant Antibody, PE/Dazzle™ 594 anti-human CD56 (NCAM) Recombinant Antibody, PerCP/Cyanine5.5 anti-human CD56 (NCAM) Recombinant Antibody, PE/Cyanine7 anti-human CD56 (NCAM) Recombinant Antibody

## Product Data



Human peripheral blood lymphocytes stained with purified recombinant CD56 (clone QA18A21) (left) or purified mouse IgG1, κ isotype control (right), followed by anti-mouse IgG PE and CD3 APC.



Human peripheral blood lymphocytes stained with purified recombinant CD56 (clone QA18A21) (left) or purified mouse IgG1, κ isotype control (right), followed by anti-mouse IgG PE and CD16 FITC.

For research use only. Not for diagnostic use. Not for resale. BioLegend will not be held responsible for patent infringement or other violations that may occur with the use of our products.

\*These products may be covered by one or more Limited Use Label Licenses (see the BioLegend Catalog or our website, [www.biolegend.com/ordering#license](http://www.biolegend.com/ordering#license)). BioLegend products may not be transferred to third parties, resold, modified for resale, or used to manufacture commercial products, reverse engineer functionally similar materials, or to provide a service to third parties without written approval of BioLegend. By use of these products you accept the terms and conditions of all applicable Limited Use Label Licenses. Unless otherwise indicated, these products are for research use only and are not intended for human or animal diagnostic, therapeutic or commercial use.

BioLegend Inc., 8999 BioLegend Way, San Diego, CA 92121 [www.biolegend.com](http://www.biolegend.com)  
Toll-Free Phone: 1-877-Bio-Legend (246-5343) Phone: (858) 768-5800 Fax: (877) 455-9587