

Ultra-LEAF™ Purified anti-Syntrophin Antibody

Catalog# / Size	845103 / 100 µg
Clone	1351
Regulatory Status	RUO
Other Names	Dystrophin-associated protein A1 acidic component 1, Pro-TGF-alpha cytoplasmic domain-interacting protein 1, TACIP1, Syntrophin-1, SNT1, LQT12,dJ1187J4.5
Isotype	Mouse IgG1, κ
Description	Syntrophins are a family of five 60 kD adapter proteins that use their multiple protein interaction domains (two PHDs and a PDZ) to localize various signaling proteins (kinases, ion/water channels, or NOS) to specific intracellular locations. In neurons, syntrophins are known as the postsynaptic density protein (PSD) that serves to connect neurotransmitter receptors (such as nAChRs) to the cytoskeleton.

Product Details

Verified Reactivity	Human, Mouse, Rat
Antibody Type	Monoclonal
Host Species	Mouse
Immunogen	Whole purified syntrophin from <i>Torpedo californica</i> electric organ postsynaptic membrane.
Formulation	0.2 µm filtered in phosphate-buffered solution, pH 7.2, containing no preservative. Endotoxin level is <0.01 EU/µg of the protein (<0.001 ng/µg of the protein) as determined by the LAL test.
Preparation	The Ultra-LEAF™ (Low Endotoxin, Azide-Free) antibody was purified by affinity chromatography.
Concentration	The antibody is bottled at the concentration indicated on the vial, typically between 2 mg/mL and 3 mg/mL. Older lots may have also been bottled at 1 mg/mL. To obtain lot-specific concentration, please enter the lot number in our Concentration and Expiration Lookup or Certificate of Analysis online tools.
Storage & Handling	The antibody solution should be stored undiluted between 2°C and 8°C. This Ultra-LEAF™ solution contains no preservative; handle under aseptic conditions.
Application	WB - Quality tested
Recommended Usage	Each lot of this antibody is quality control tested by Western blotting . For Western blotting, the suggested use of this reagent is 1.0 - 5.0 µg per ml. It is recommended that the reagent be titrated for optimal performance for each application.
Application Notes	The epitope has been mapped to amino acids 108-120 within the α-syntrophin PDZ domain.
Application References (PubMed link indicates BioLegend citation)	<ol style="list-style-type: none"> 1. Froehner S, <i>et al.</i> 1987. <i>J. Cell Biol.</i> 104:1633. (WB, IHC) 2. Gee S, <i>et al.</i> 1998. <i>J. Neurosci.</i> 18:128. (IP) 3. Ort T, <i>et al.</i> 2001. <i>EMBO</i> 20:4013. (IP, WB) 4. Adams M, <i>et al.</i> 2001. <i>J. Cell Biol.</i> 155:113. (IF) 5. Williams M, <i>et al.</i> 1999. <i>J. Cell Biol.</i> 144:1259. (IHC)
RRID	AB_2566134 (BioLegend Cat. No. 845103)

Antigen Details

Structure	Monomer and homodimer. Syntrophins consist of a conserved domain, two pleckstin homology domains, a PDZ domain, and a highly conserved C-terminal syntrophin unique (SU) domain. Expected MW: 58 kD.
------------------	--

Function	Adapter protein that binds to and probably organizes the subcellular localization of a variety of membrane proteins. May link various receptors to the actin cytoskeleton and the dystrophin glycoprotein complex.
Interaction	Interacts with the other members of the syntrophin family SNTB1 and SNTB2; SGCG and SGCA of the dystrophin glycoprotein complex; NOS1; GRB2; the sodium channel proteins SCN4A and SCN5A; F-actin and calmodulin; Interacts with MYOC.
Biology Area	Cell Biology, Neuroscience, Signal Transduction, Synaptic Biology
Molecular Family	Postsynaptic proteins
Gene ID	6640

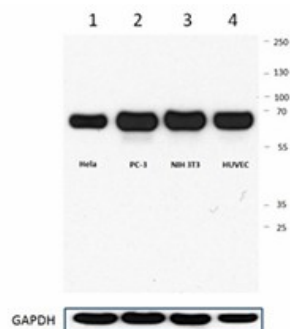
Related Protocols

[Western Blotting Protocol](#)

Other Formats

Purified anti-Syntrophin, Ultra-LEAF™ Purified anti-Syntrophin

Product Data



Western blot showing human and mouse reactivity with clone 1351, which was tested on 15 µg/lane of HeLa, PC-3, 3T3, and HUVEC lysates and was tested at 1 µg/ml. The blot was incubated with HRP anti-mouse IgG secondary antibody and GAPDH antibody was used as a positive control.

For research use only. Not for diagnostic use. Not for resale. BioLegend will not be held responsible for patent infringement or other violations that may occur with the use of our products.

*These products may be covered by one or more Limited Use Label Licenses (see the BioLegend Catalog or our website, www.biolegend.com/ordering#license). BioLegend products may not be transferred to third parties, resold, modified for resale, or used to manufacture commercial products, reverse engineer functionally similar materials, or to provide a service to third parties without written approval of BioLegend. By use of these products you accept the terms and conditions of all applicable Limited Use Label Licenses. Unless otherwise indicated, these products are for research use only and are not intended for human or animal diagnostic, therapeutic or commercial use.

BioLegend Inc., 8999 BioLegend Way, San Diego, CA 92121 www.biolegend.com
Toll-Free Phone: 1-877-Bio-Legend (246-5343) Phone: (858) 768-5800 Fax: (877) 455-9587