

Alexa Fluor[®] 700 anti-mouse Ly-6G Antibody

Catalog# / Size	127621 / 25 µg 127622 / 100 µg
Clone	1A8
Regulatory Status	RUO
Other Names	Lymphocyte antigen 6 complex, locus G
Isotype	Rat IgG2a, κ
Description	Lymphocyte antigen 6 complex, locus G (Ly-6G), a 21-25 kD GPI-anchored protein, is expressed on the majority of myeloid cells in bone marrow and peripheral granulocytes.

Product Details

Verified Reactivity	Mouse
Antibody Type	Monoclonal
Host Species	Rat
Immunogen	Ly-6G transfected EL-4J cell line.
Formulation	Phosphate-buffered solution, pH 7.2, containing 0.09% sodium azide.
Preparation	The antibody was purified by affinity chromatography and conjugated with Alexa Fluor [®] 700 under optimal conditions.
Concentration	0.5 mg/ml
Storage & Handling	The antibody solution should be stored undiluted between 2°C and 8°C, and protected from prolonged exposure to light. Do not freeze.
Application	FC - Quality tested IHC - Reported in the literature, not verified in house
Recommended Usage	<p>Each lot of this antibody is quality control tested by immunofluorescent staining with flow cytometric analysis. The suggested use of this reagent is ≤0.25 µg per million cells in 100 µl volume. It is highly recommended that the reagent be titrated for optimal performance for each application.</p> <p>* Alexa Fluor[®] 700 has a maximum emission of 719 nm when it is excited at 633 nm / 635 nm. Prior to using Alexa Fluor[®] 700 conjugate for flow cytometric analysis, please verify your flow cytometer's capability of exciting and detecting the fluorochrome.</p> <p>Alexa Fluor[®] and Pacific Blue™ are trademarks of Life Technologies Corporation.</p> <p>View full statement regarding label licenses</p>
Excitation Laser	Red Laser (633 nm)
Application Notes	<p>While 1A8 recognizes only Ly-6G, clone RB6-8C5 recognizes both Ly-6G and Ly-6C. Clone RB6-8C5 binds with high affinity to mouse Ly-6G molecules and to a lower extent to Ly-6C¹⁵. Clone RB6-8C5 impairs the binding of anti-mouse Ly-6G clone 1A8¹⁵. However, clone RB6-8C5 is able to stain in the presence of anti-mouse Ly-6C clone HK1.4¹⁶.</p> <p>Additional reported applications (for the relevant formats) include: immunohistochemistry⁹ of frozen sections¹⁰ and paraffin-embedded sections¹¹, depletion^{4, 12-14}, and spatial biology (IBEX)^{20,21}. The Ultra-LEAF™ purified antibody (Endotoxin < 0.01 EU/µg, Azide-Free, 0.2 µm filtered) is recommended for <i>in vivo</i> studies or highly sensitive assays (Cat. No. 127632, 127649, 127650, 127661 and 127662).</p>
Application References	<ol style="list-style-type: none"> Fleming TJ, <i>et al.</i> 1993. <i>J. Immunol.</i> 151:2399. (FC) Daley JM, <i>et al.</i> 2008. <i>J. Leukocyte Biol.</i> 83:1. (FC) Dietlin TA, <i>et al.</i> 2007. <i>J. Leukocyte Biol.</i> 81:1205. (FC)

4. Daley J, *et al.* 2007. *J. Leukocyte Biol.* doi:10.1189. (Deplete) [PubMed](#)
5. Tadagavadi RK, *et al.* 2010. *J. Immunol.* 185:4904. [PubMed](#)
6. Sumagin R, *et al.* 2010. *J. Immunol.* 185:7057. [PubMed](#)
7. Guiducci C, *et al.* 2010. *J. Exp Med.* 207:2931. [PubMed](#)
8. Fujita M, *et al.* 2011. *Cancer Res.* 71:2664. [PubMed](#)
9. Van Leeuwen, *et al.* 2008. *Arterioscler. Thromb. Vasc. Biol.* 28:84. (IHC)
10. Kowanetz M, *et al.* 2010. *P. Natl. Acad. Sci. USA* 107:21248. [supplementary data] (IHC)
11. Esbona K, *et al.* 2016. *Breast Cancer Res.* 18:35. (IHC)
12. Wojtasiak M, *et al.* 2010. *J. Gen. Virol.* 91:2158. (FC, Deplete)
13. Jaeger BN, *et al.* 2012. *J. Exp. Med.* 209:565. (Deplete)
14. Wozniak KL, *et al.* 2012. *BMC Immunol.* 13:65 (FC, Deplete)
15. Ribechini E, *et al.* 2009. *Eur. J. Immunol.* 39:3538.
16. Ng LG, *et al.* 2011. *J Invest. Dermatol.* 131:2058. [PubMed](#)
17. Ma C, *et al.* 2012. *J. Leukoc. Biol.* 92:1199.
18. McCartney-Francis, N, *et al.* 2014. *J Leukoc. Biol.* 96:917. [PubMed](#)
19. Her Z, *et al.* 2014. *EMBO Mol. Med.* 7:24. [PubMed](#)
20. Radtke AJ, *et al.* 2020. *Proc Natl Acad Sci U S A.* 117:33455-65. (SB) [PubMed](#)
21. Radtke AJ, *et al.* 2022. *Nat Protoc.* 17:378-401. (SB) [PubMed](#)

Product Citations

1. Schädlich IS, *et al.* 2022. *iScience.* 25:104470. [PubMed](#)
2. Bruggemann TR, *et al.* 2022. *iScience.* 25:105185. [PubMed](#)
3. Gallizioli M, *et al.* 2020. *Cell Rep.* 33:108291. [PubMed](#)
4. Lyons J, *et al.* 2018. *PLoS Biol.* 16:e2002417. [PubMed](#)
5. Sauter M, *et al.* 2022. *iScience.* 25:103677. [PubMed](#)
6. Dong L, *et al.* 2021. *Cancer Cell.* . [PubMed](#)
7. Haertel E, *et al.* 2018. *Eur J Immunol.* 48:1001. [PubMed](#)
8. Hreha TN, *et al.* 2020. *Front Immunol.* 11:597916667. [PubMed](#)
9. Salas-Pérdomo A, *et al.* 2019. *Sci Rep.* 9:8309. [PubMed](#)
10. Ma C, *et al.* 2018. *Science.* 360:eaan5931. [PubMed](#)
11. Esmaili S, *et al.* 2021. *Cell Systems.* 12(5):432-445.e7. [PubMed](#)
12. Liang P, *et al.* 2022. *Mol Biomed.* 3:14. [PubMed](#)
13. Tuit S, *et al.* 2019. *Cell Rep.* 29:1221. [PubMed](#)
14. Lyons J, *et al.* 2018. *Sci Signal.* 11. [PubMed](#)
15. Ellis G, *et al.* 2015. *EMBO Rep.* 16: 1203-1218. [PubMed](#)
16. Mainz RE, *et al.* 2022. *Cells.* 11:. [PubMed](#)
17. Zhang Y, *et al.* 2015. *PLoS Pathog.* 11: e1005167. [PubMed](#)
18. Stewart JM, *et al.* 2020. *ACS Biomater Sci Eng.* 6:5941. [PubMed](#)
19. Hartwig T *et al.* 2018. *Cell reports.* 25(13):3564-3572 . [PubMed](#)
20. Lin J, *et al.* 2017. *Sci Rep.* 7:41722. [PubMed](#)
21. Lu CY, *et al.* 2020. *J Neurosci.* 40:9602. [PubMed](#)
22. Hanasoge Somasundara AV, *et al.* 2021. *Cell Rep.* 37:110099. [PubMed](#)
23. Pascual-García M, *et al.* 2019. *Nat Commun.* 10:2416. [PubMed](#)
24. Kren N, *et al.* 2020. *Sci Rep.* 10:7390. [PubMed](#)
25. Lewis EL, *et al.* 2021. *Front Immunol.* 12:741518. [PubMed](#)
26. Qi S *et al.* 2016. *eLife.* 5 pii: e14756. [PubMed](#)
27. Ahadome S, *et al.* 2016. *JCI Insight.* 1:e87012. [PubMed](#)
28. Krueger A, *et al.* 2022. *Front Microbiol.* 12:789042. [PubMed](#)
29. Gilbert NM, *et al.* 2021. *Biol Open.* 10:. [PubMed](#)
30. Toomey CB, *et al.* 2018. *Invest Ophthalmol Vis Sci.* 59:662. [PubMed](#)
31. Da Silva CG, *et al.* 2019. *Theranostics.* 4.878472222. [PubMed](#)
32. Engler AE, *et al.* 2020. *Cell Reports.* 33(13):108553. [PubMed](#)
33. Henrich IC, *et al.* 2021. *Cancer Res.* 81:2171. [PubMed](#)
34. Jin C, *et al.* 2019. *Cell.* 176:998. [PubMed](#)
35. Uderhardt S, *et al.* 2019. *Cell.* 177:541. [PubMed](#)
36. Toomey C, *et al.* 2015. *Proc Natl Acad Sci U S A.* 112:3040. [PubMed](#)
37. Tang Q, *et al.* 2021. *Immunity.* 54:1961. [PubMed](#)
38. Echevarría-Vargas IM, *et al.* 2018. *EMBO Mol Med.* 10:e8446. [PubMed](#)
39. Godwin MS, *et al.* 2019. *JCI Insight.* 4:e126070. [PubMed](#)
40. Otxoa-de-Amezaga A, *et al.* 2019. *Stroke.* 50:1548. [PubMed](#)
41. Youshani AS, *et al.* 2019. *J Neuroinflammation.* 16:25. [PubMed](#)
42. Soberanes S *et al.* 2018. *Cell metabolism.* 29(2):335-347 . [PubMed](#)
43. Nalbandian A, *et al.* 2017. *Inflammation.* 40:21:00. [PubMed](#)
44. Baumann D, *et al.* 2020. *Nat Commun.* 1.969444444. [PubMed](#)
45. Clemente-Casares X, *et al.* 2017. *Immunity.* 47:974. [PubMed](#)
46. Molgora M, *et al.* 2020. *Cell.* 182:886. [PubMed](#)
47. Grube J, *et al.* 2022. *Cell Death Dis.* 13:704. [PubMed](#)
48. Walsh CM, *et al.* 2019. *Elife.* 8:e48448. [PubMed](#)
49. Celorrio M, *et al.* 2022. *Acta Neuropathol Commun.* 10:10. [PubMed](#)
50. Tippimanchai DD, *et al.* 2018. *Oncoimmunology.* 7:e1438105. [PubMed](#)
51. Freed-Pastor WA, *et al.* 2021. *Cancer Cell.* . [PubMed](#)
52. E O'Koren, R Mathew, D Saban 2016. *Sci Rep.* 6:20636. [PubMed](#)
53. Smith R, *et al.* 2016. *J Leukoc Biol.* 100:371-80. [PubMed](#)
54. Chen D, *et al.* 2021. *JCI Insight.* 6:. [PubMed](#)
55. Spiljar M, *et al.* 2021. *Cell Metab.* 33:2231. [PubMed](#)
56. Flak MB, *et al.* 2020. *J Clin Invest.* 130:359. [PubMed](#)
57. Fearon AE, *et al.* 2021. *iScience.* 24:103143. [PubMed](#)
58. Matei DE, *et al.* 2021. *Med (N Y).* 2:864. [PubMed](#)
59. Di Liberto G *et al.* 2018. *Cell.* 175(2):458-471 . [PubMed](#)

60. Avgustinova A, *et al.* 2021. Cell Stem Cell. . [PubMed](#)
61. Ito Y, *et al.* 2021. Cell Reports. 35(4):109052. [PubMed](#)

RRID AB_10640452 (BioLegend Cat. No. 127621)
AB_10643269 (BioLegend Cat. No. 127622)

Antigen Details

Structure	A 21-35 kD GPI-anchored membrane protein
Distribution	Expressed on the majority of myeloid cells in bone marrow and peripheral granulocytes. The monoclonal antibody RB6-8C5 recognizes both Ly-6G and Ly-6C.
Cell Type	Granulocytes, Macrophages, Monocytes
Biology Area	Immunology, Innate Immunity
Antigen References	Fleming TJ, <i>et al.</i> 1993. <i>J. Immunol.</i> 151:2399.
Gene ID	546644

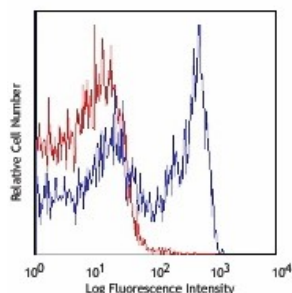
Related Protocols

[Cell Surface Flow Cytometry Staining Protocol](#)

Other Formats

Alexa Fluor® 594 anti-mouse Ly-6G, Purified anti-mouse Ly-6G, Biotin anti-mouse Ly-6G, FITC anti-mouse Ly-6G, PE anti-mouse Ly-6G, Alexa Fluor® 647 anti-mouse Ly-6G, Pacific Blue™ anti-mouse Ly-6G, APC anti-mouse Ly-6G, PerCP/Cyanine5.5 anti-mouse Ly-6G, PE/Cyanine7 anti-mouse Ly-6G, Alexa Fluor® 700 anti-mouse Ly-6G, APC/Cyanine7 anti-mouse Ly-6G, Alexa Fluor® 488 anti-mouse Ly-6G, Brilliant Violet 421™ anti-mouse Ly-6G, Brilliant Violet 570™ anti-mouse Ly-6G, Ultra-LEAF™ Purified anti-mouse Ly-6G, Brilliant Violet 510™ anti-mouse Ly-6G, Purified anti-mouse Ly-6G (Maxpar® Ready), Brilliant Violet 650™ anti-mouse Ly-6G, Brilliant Violet 711™ anti-mouse Ly-6G, Brilliant Violet 605™ anti-mouse Ly-6G, Brilliant Violet 785™ anti-mouse Ly-6G, PE/Dazzle™ 594 anti-mouse Ly-6G, APC/Fire™ 750 anti-mouse Ly-6G, PerCP anti-mouse Ly-6G, TotalSeq™-A0015 anti-mouse Ly-6G, TotalSeq™-C0015 anti-mouse Ly-6G, TotalSeq™-B0015 anti-mouse Ly-6G, Spark Blue™ 550 anti-mouse Ly-6G, Spark NIR™ 685 anti-mouse Ly-6G, Spark YG™ 593 anti-mouse Ly-6G, APC/Fire™ 810 anti-mouse Ly-6G Antibody, PE/Cyanine5 anti-mouse Ly-6G, PE/Fire™ 810 anti-mouse Ly-6G Antibody, Spark UV™ 387 anti-mouse Ly-6G, PE/Fire™ 640 anti-mouse Ly-6G

Product Data



C57BL/6 bone marrow cells stained with
1A8 Alexa Fluor® 700

For research use only. Not for diagnostic use. Not for resale. BioLegend will not be held responsible for patent infringement or other violations that may occur with the use of our products.

*These products may be covered by one or more Limited Use Label Licenses (see the BioLegend Catalog or our website, www.biolegend.com/ordering#license). BioLegend products may not be transferred to third parties, resold, modified for resale, or used to manufacture commercial products, reverse engineer functionally similar materials, or to provide a service to third parties without written approval of BioLegend. By use of these products you accept the terms and conditions of all applicable Limited Use Label Licenses. Unless otherwise indicated, these products are for research use only and are not intended for human or animal diagnostic, therapeutic or commercial use.

Toll-Free Phone: 1-877-Bio-Legend (246-5343) Phone: (858) 768-5800 Fax: (877) 455-9587